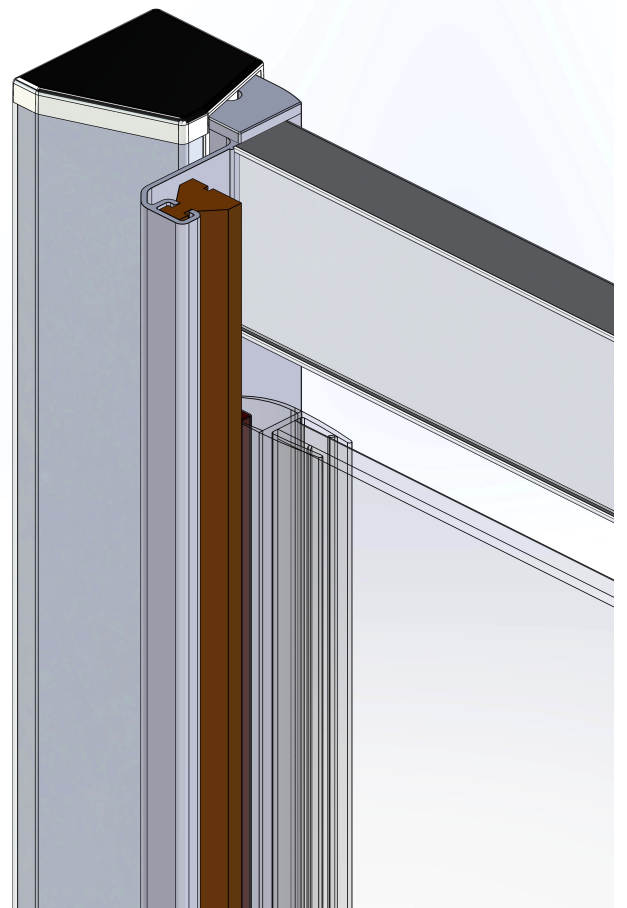
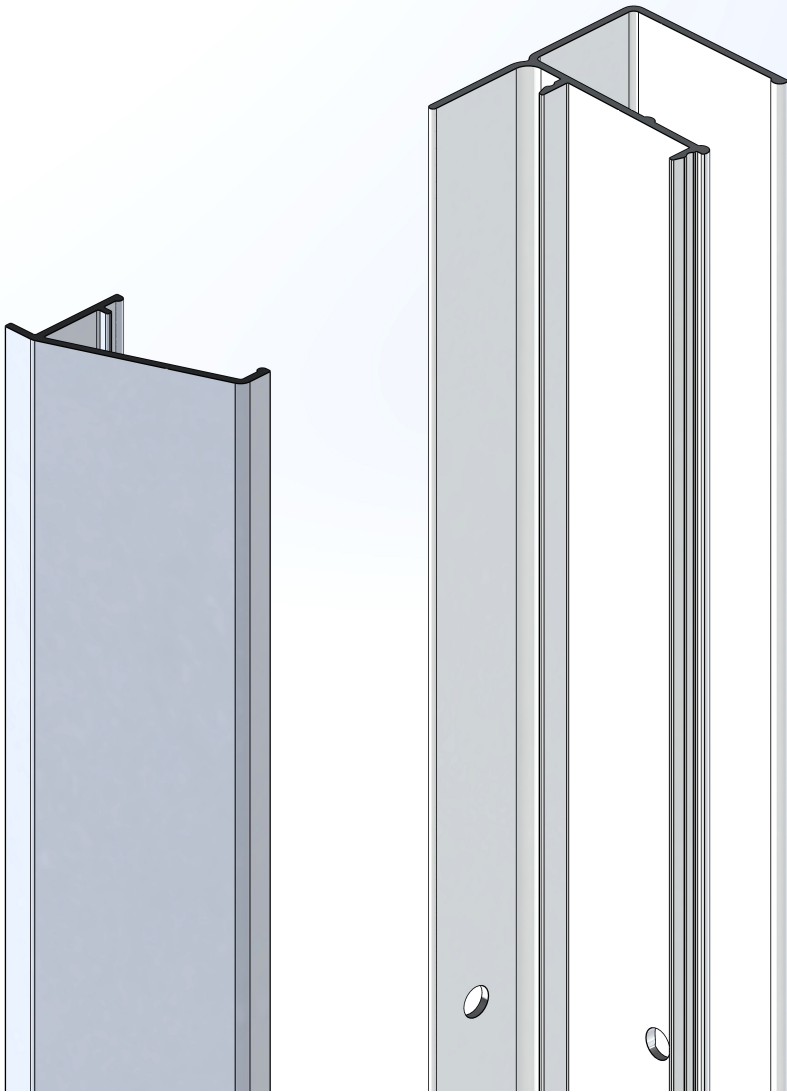
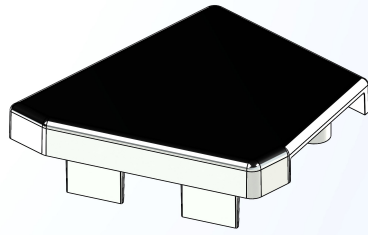


# Wall Profile & Cover Section.

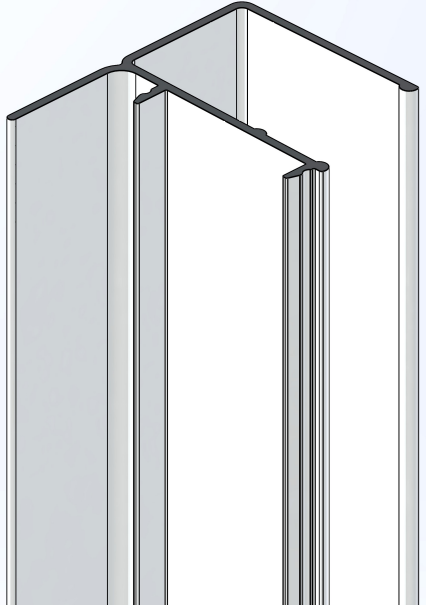
## Installation & Maintenance Instructions



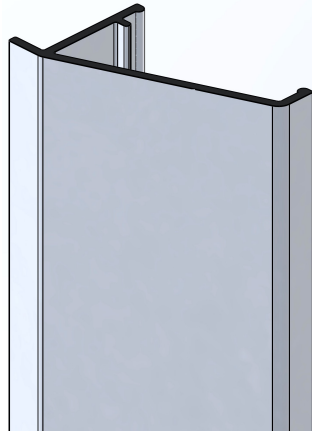
For illustration purposes, wall profile & cover used in conjunction with pivot door.

Use these instructions in conjunction with corresponding door / panel instructions.

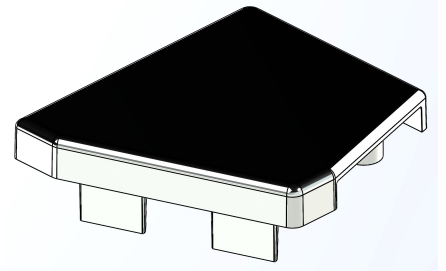
## Supplied Parts :



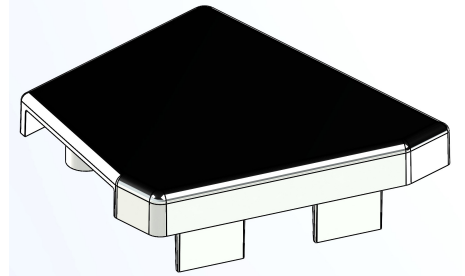
Wall Profile 2x



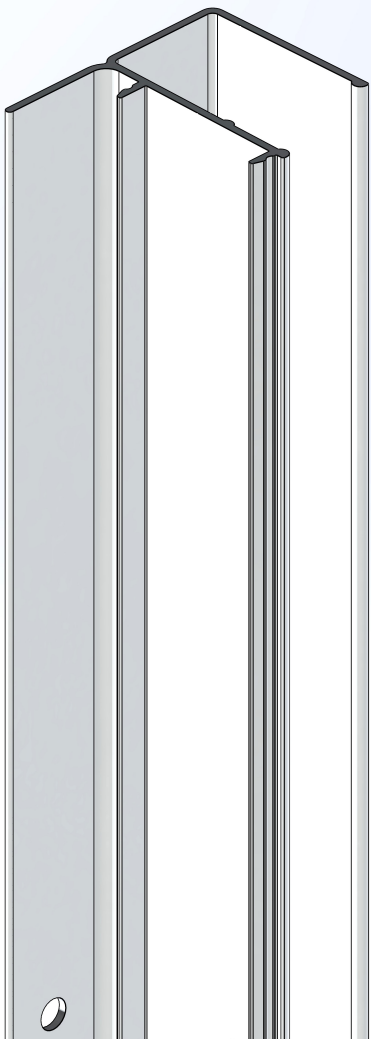
Cover Profile 2x



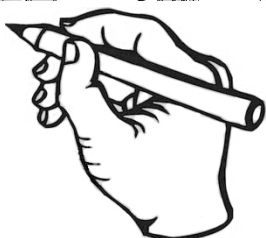
Top Cap RH 1x



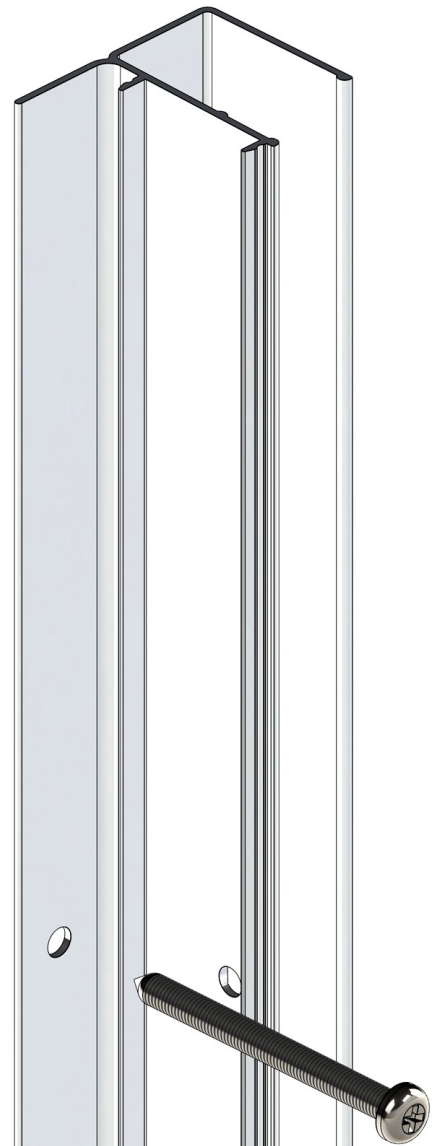
Top Cap LH 1x

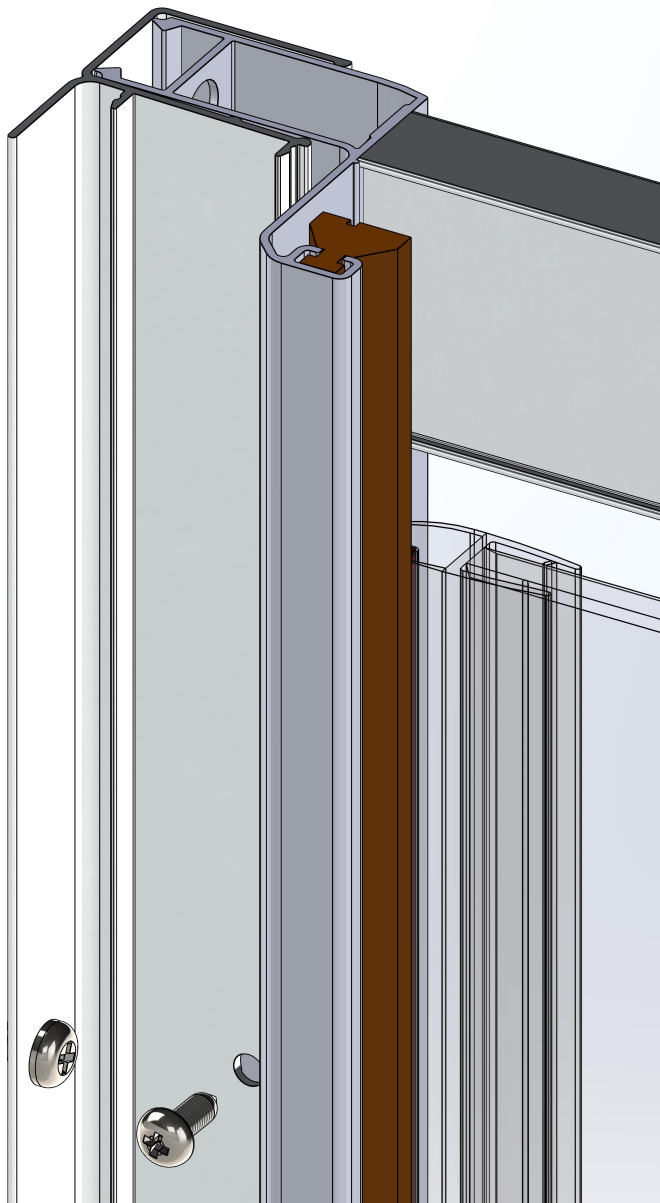


Having determined wall profile positions, ensuring plumb & flange to INSIDE, mark wall hole locations (3 places). Drill walls & fit wall plugs.

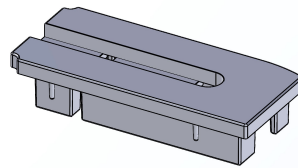
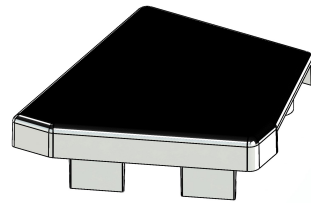


Affix wall profiles to walls using 4mm x 45mm long screws.





Finalise door / panel install & positioning,  
then affix frames to wall profiles using  
3.5 x 10mm long screws.



Align & fit cover sections.  
Fit all top caps.

