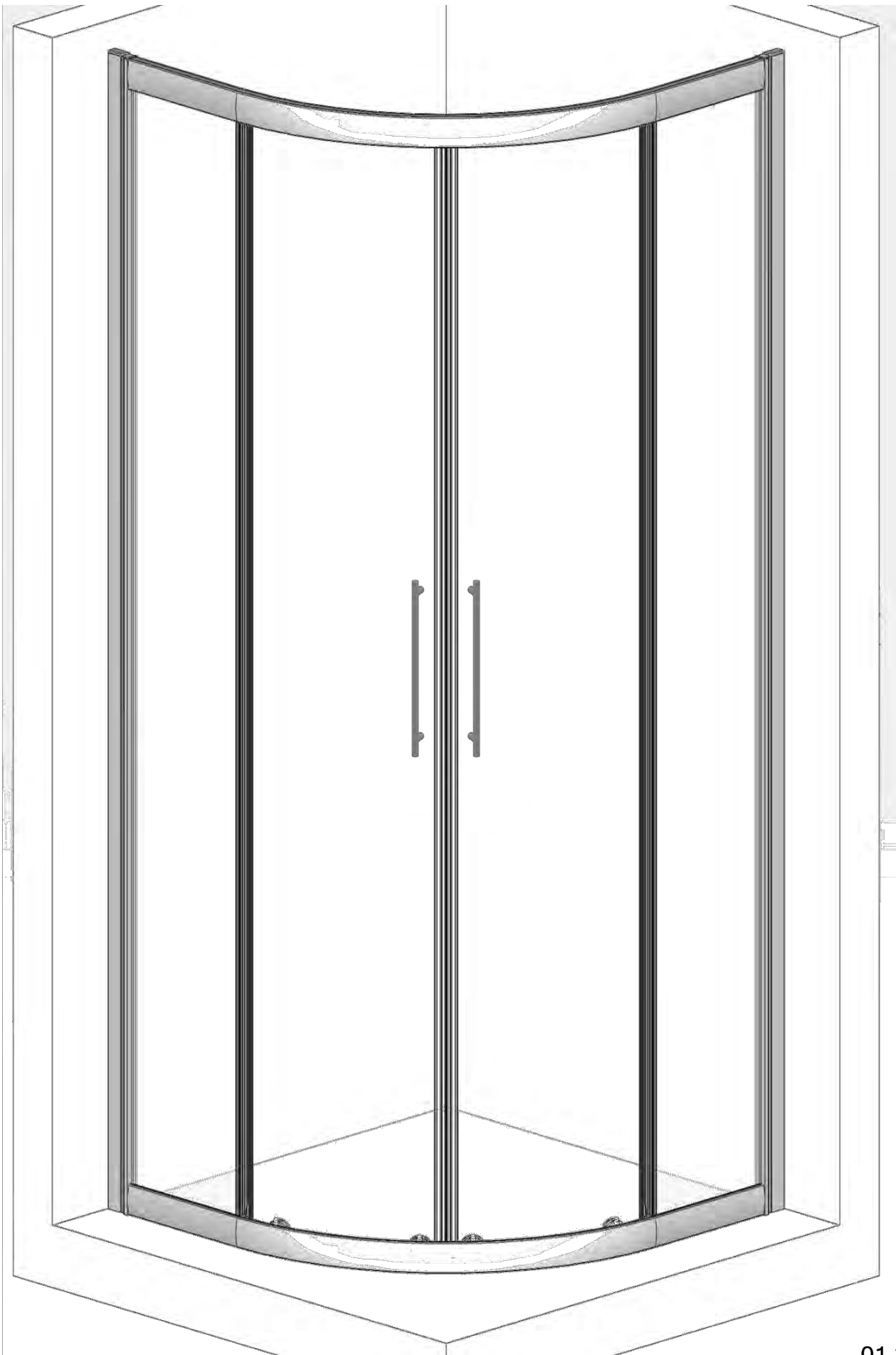


QUADRANT Installation & Maintenance Instructions



Important Notes :

Please Read Carefully & retain these instructions for Future Reference.

1. For ease & safety we advise that two persons assemble this product.
2. Protect shower tray surfaces at all times.
3. Check for cables, pipes etc before drilling walls.
4. Ensure all surfaces are dry, clean & free of loose debris / dust.
5. Unpack goods with care (small parts can become lodged in packaging & inadvertently discarded). Check parts supplied against parts & fittings listed herein. Damaged parts / omissions may be resolved by calling Helpline.
6. Whilst precautions are taken in manufacture, care must be taken when handling as rail ends may have sharp edges.
7. Before commencing, check :
 - a) shower tray is level & completely sealed to finished / tiled walls.
 - b) finished walls are sound & free of cracks loose tiles / grout.
 - c) tray radius is 550mm (check with supplier / manufacturer).
8. **AFTER INSTALLATION, DO NOT 'WET' ENCLOSURE FOR 48 HOURS TO ENSURE FULL CURE OF SILICONE SEALANT.**

Use :

General Care & Maintenance.

Provided this product is installed & operated in accordance with these instructions, problems should not arise. However should maintenance be required it should be carried out by a competent person with reference to these instructions. Before any work is carried out the root cause of the problem must be identified. Service engineers are available to consult / carry out remedial work ~ call Helpline.

Cleaning.

(Every one to two weeks depending on local water {hardness} conditions).

All glass panels in this product have a hydrophobic coating aiding 'runoff' of water droplets, reducing the need for frequent cleaning. For best appearance / product life however, regular cleaning is recommended.

Use ONLY mild soap / detergent solutions to clean. Rinse with water, squeegee glass panels & wipe frames dry with a soft cloth. Under no circumstances should abrasive, caustic or scouring products be used. DO NOT use 'spray & leave' type cleaning products. Non compliance with these cleaning instructions may cause plated / painted finishes to deteriorate & could adversely affect safe operation of the enclosure.

Limescale ~ should a build up of limescale occur, remove using a 50:50 solution of white vinegar & water applied with a soft cloth & rinsed / dried thoroughly afterwards.

Daily Care.

To prevent the build up of limescale, do not allow water droplets to dry on glass or frames. After showering, rinse with water, remove droplets from glass with a squeegee & wipe frame with a soft cloth.

Customer Service.

Quality Guarantee : Shower Doors & Enclosures are guaranteed against any manufacturing or material defects for the duration of the warranty. Defects will be resolved free of charge by repairing or replacing parts as we feel necessary. To be 'free of charge' service work must be carried out by approved agents. Call Helpline.

Not Covered by this Guarantee : Damage or defects that result from improper installation, improper use, or lack of maintenance (including limescale buildup). Damage or defects that result from repairs or modifications undertaken by unauthorized persons.

This guarantee is in addition to statutory & other legal rights.

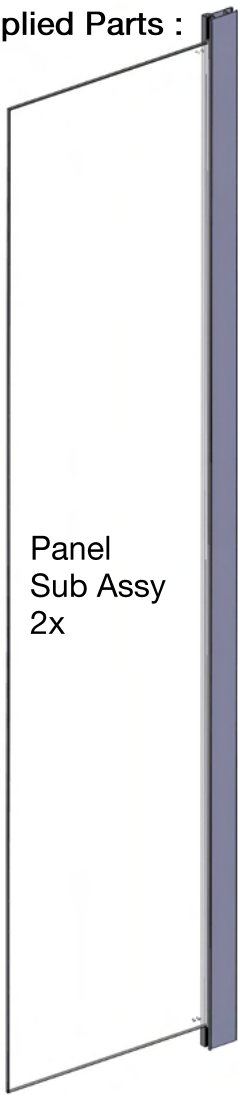
What to do if something goes wrong : Should the product not function correctly on initial use, firstly, contact the installer to check that unit installation & commissioning are in accordance with these instructions. Should this not resolve difficulties or should performance decline, consult 'Troubleshooting' section to see if simple home maintenance is needed.

Alternatively our Helpline staff can assist, or if necessary arrange for a service engineer to visit.

Spares : We maintain extensive spare part stocks. Spares can be ordered / purchased from your retailer in the first instance. Parts will normally be dispatched within two working days from order placement.

Pro Forma invoices will be sent for cheque payments.

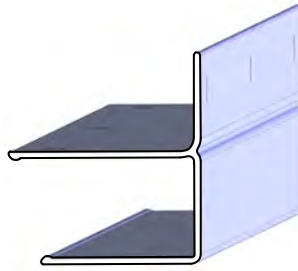
Supplied Parts :



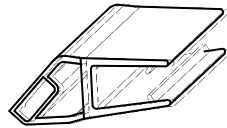
Panel Sub Assy 2x



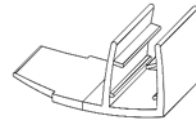
Door Glass 2x



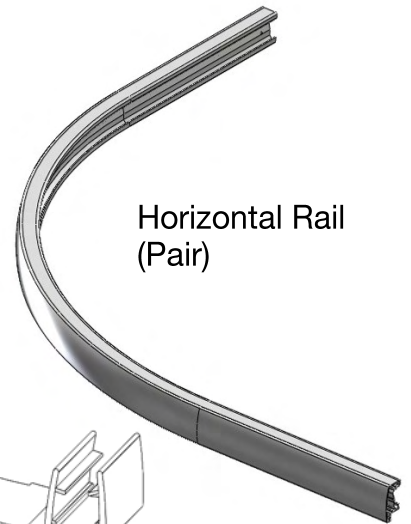
Wall Profile 2x



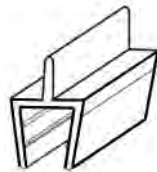
Magnetic Seal 2x



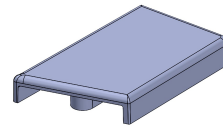
Edge Seals 2 x 2 pcs



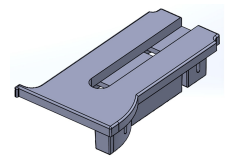
Horizontal Rail (Pair)



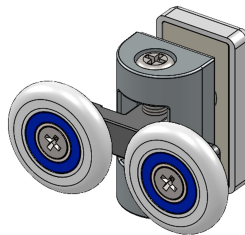
Horizontal Glazing Seal 4x



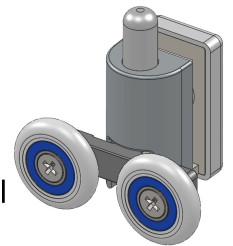
Top Cap. wall profile (handed pair)



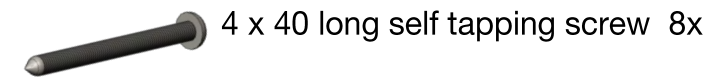
Top Cap. vert frame (handed pair)



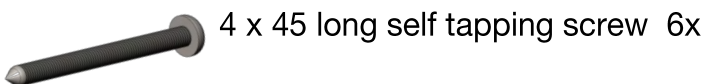
Top Wheel Assy 4x



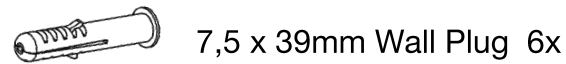
Bottom Wheel Assy 4x



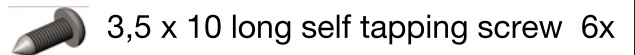
4 x 40 long self tapping screw 8x



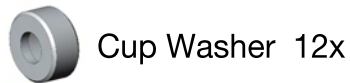
4 x 45 long self tapping screw 6x



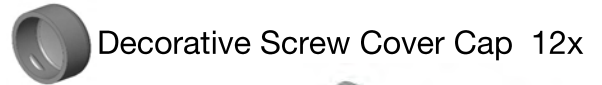
7,5 x 39mm Wall Plug 6x



3,5 x 10 long self tapping screw 6x

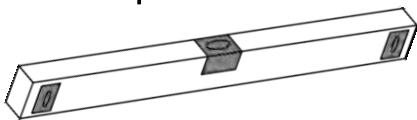


Cup Washer 12x

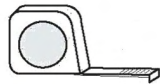


Decorative Screw Cover Cap 12x

Tools Required



Spirit Level (with vertical 'bubble')



Tape Measure



Pencil



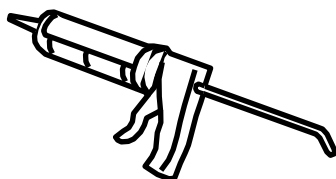
Power drill & 8mm masonry bit



Pozi drive Screwdriver



3mm HSS drill bit

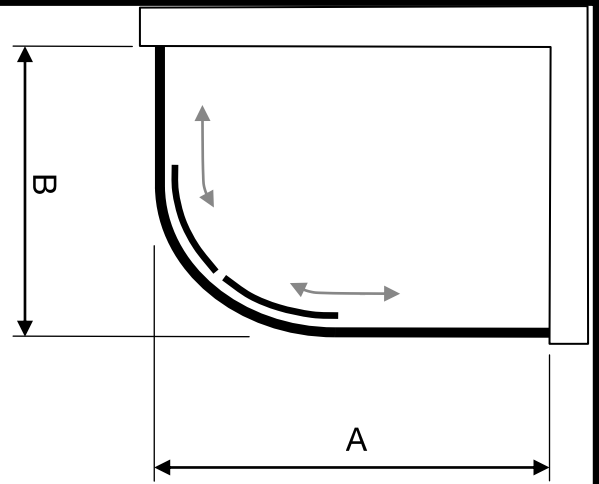


Good quality silicone sealant & applicator



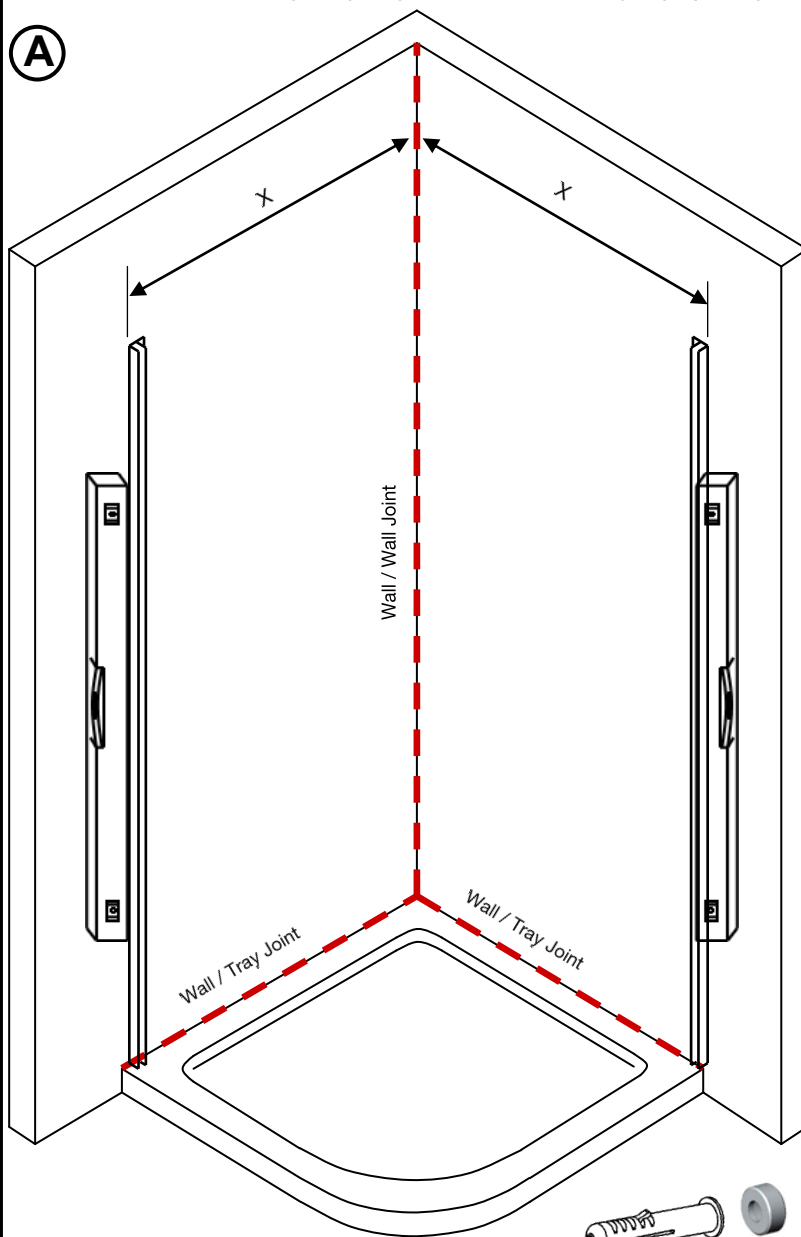
Door Handle Kit 2x

Standard Sizes (mm)	Adjustment (Dim'n A & B)	Offset Sizes (mm)	Adjustment (Dim'n A & B)
800	770 to 790mm	900800	A = 870 to 990mm B = 770 to 790mm
900	870 to 890mm	1000800	A = 970 to 990mm B = 770 to 790mm
1000	970 to 990mm	1200800	A = 1170 to 1190mm B = 770 to 790mm
1200	1170 to 1190mm	1200900	A = 1170 to 1190mm B = 870 to 890mm

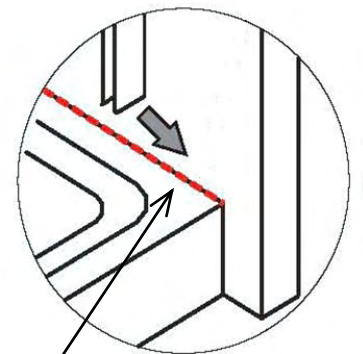


Offset Quadrant is fully reversible, so is suitable for fitting to right or left hand trays. Ensure tray is correctly levelled & that tray / wall (tile) joints are sealed & cured over entire length of tray sides (See Fig A) prior to fitting enclosure.
DO NOT SEAL TRAY EDGES UPTO A FITTED ENCLOSURE !

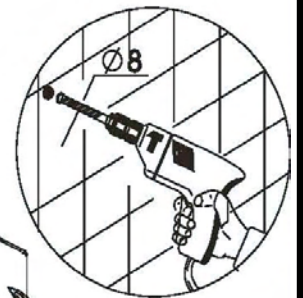
(A)



Size Ref	Dim'n X (Wall profile outside face)
800	780
900	880
1000	980
1200	1180



Ensure continuous silicone sealant bead before fitting wall rails

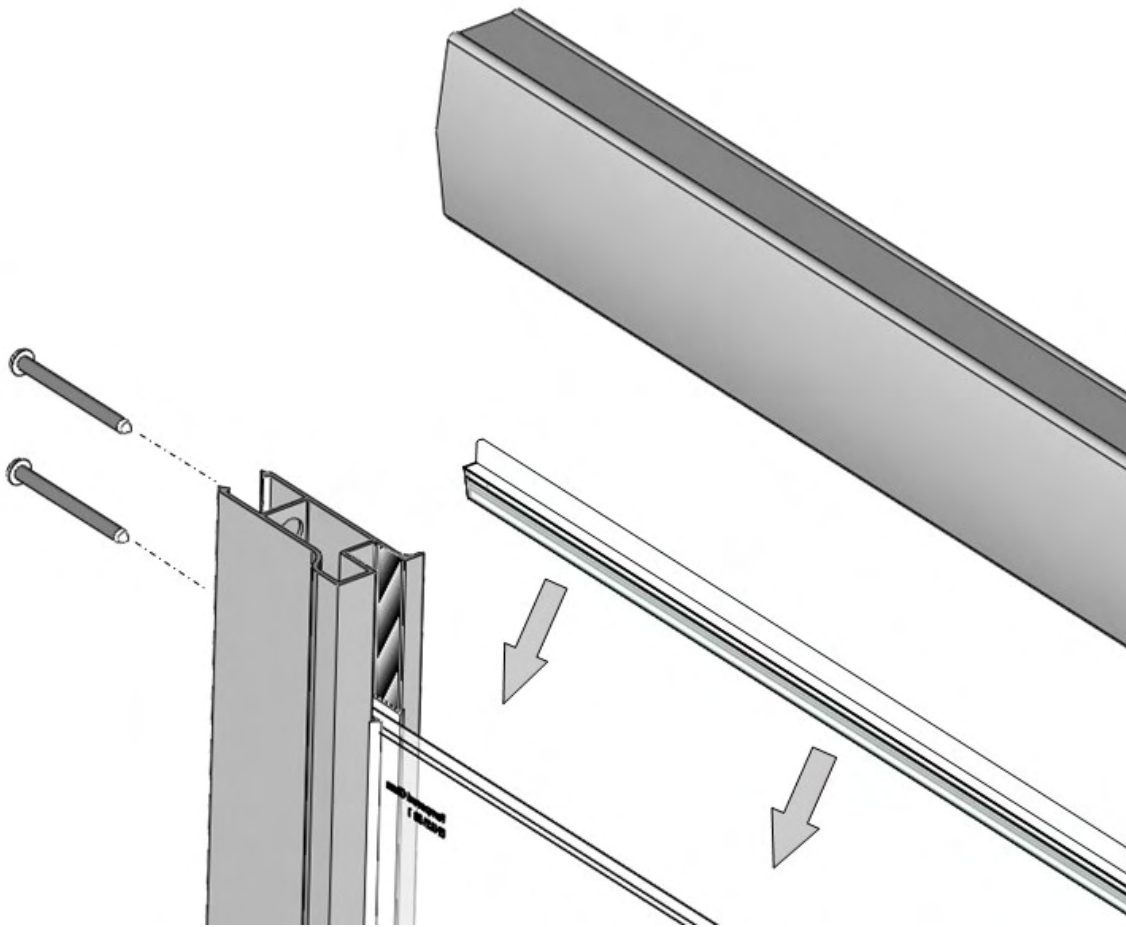


Wall profile orientation : Flange to shower side. Measure & mark wall rail positions. Mark fixing holes, drill, fit wall plugs & affix both wall profiles.

Main Frame Assembly (typical corner construction) :

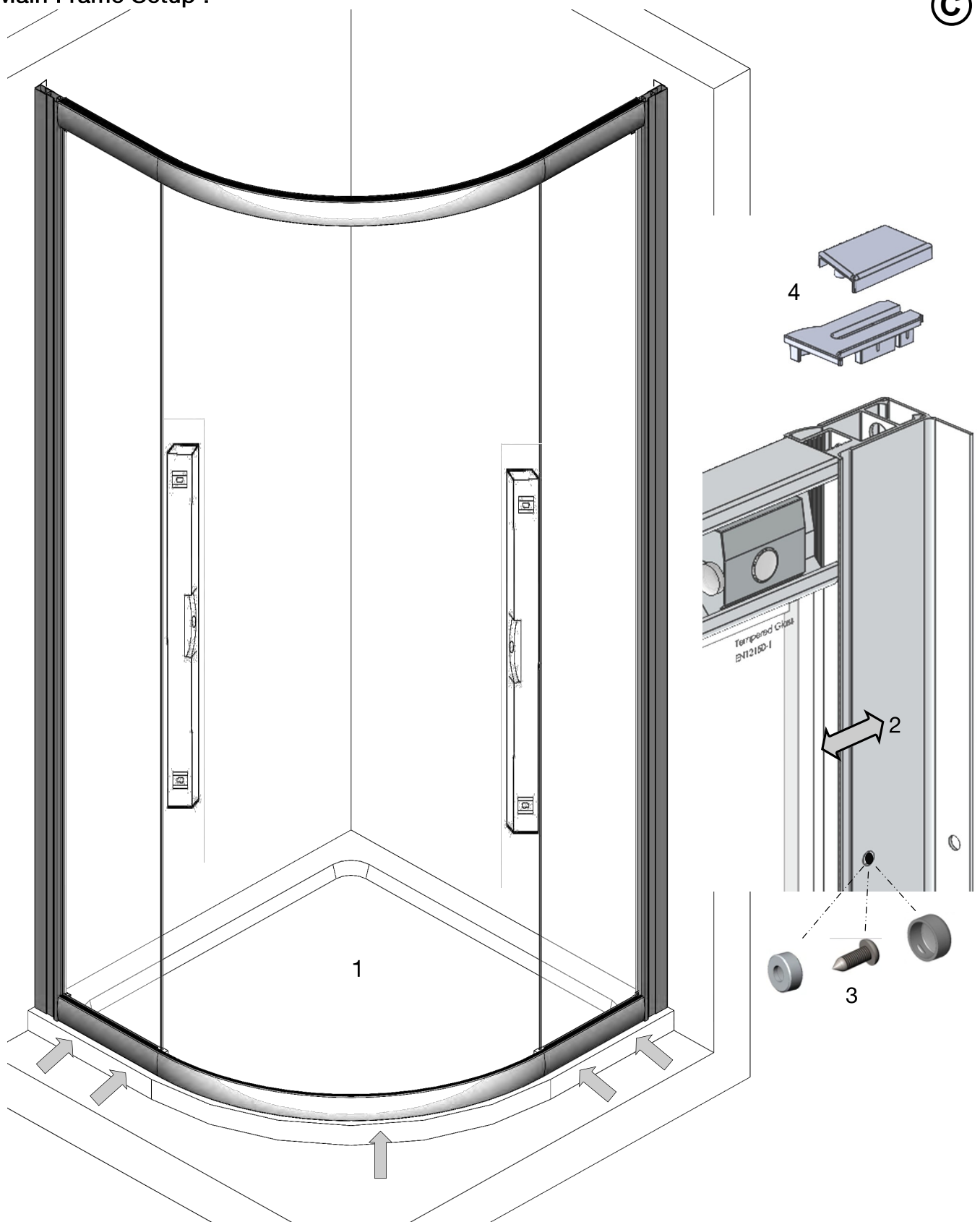
(B)

1. Fit horizontal glazing seal to ends of fixed panel glass, ensure seal is pushed fully upto vertical profile.
2. Align horizontal rail & affix with 4 x 40 long screws (2 per corner).



Main Frame Setup :

©



1. Lift frame into position, carefully align & insert into both wall profiles.
2. Manipulate frame within wall profiles until even gap is achieved between frame & tray edge. Check both sides of frame for plumb.
3. From inside enclosure, using the wall profile holes as a guide, drill (3mm) & using cup washers & decorative caps, screw frame to wall profiles (6 places).
4. Fit Frame vertical & wall profile Top Caps.

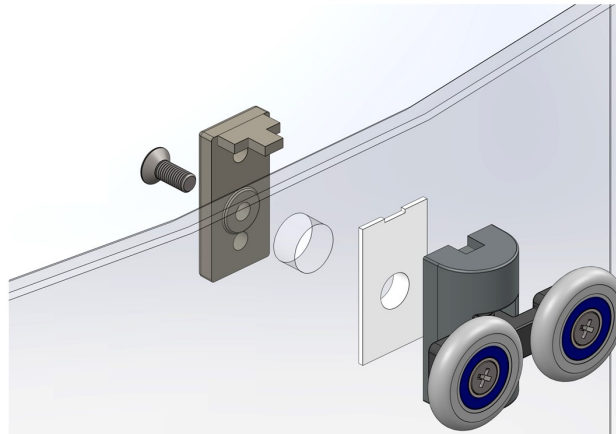
Door Assemblies : Wheels must be fitted to top & bottom of door glass as shown. Ensure gaskets are fitted between glass & main wheel body (front face of glass).

D

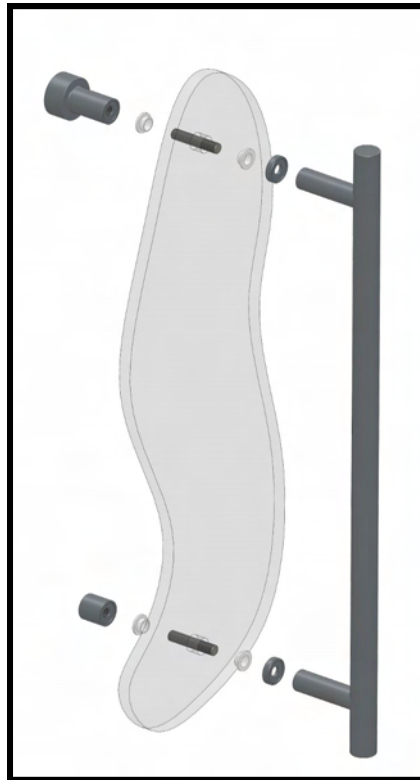
Left Hand



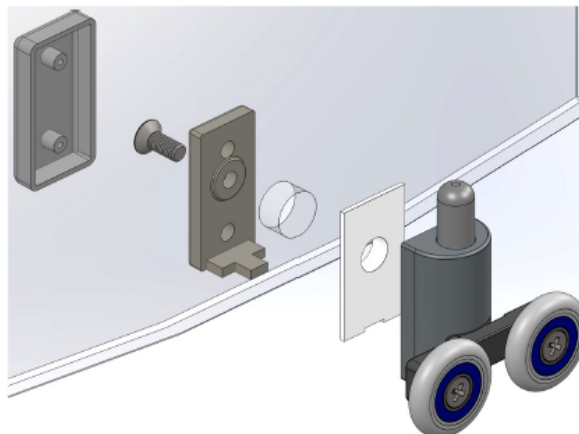
Right Hand



Loosely fit top wheels at this stage. Ensure screw is engaged in body, but do not tighten fully & do not fit cover.



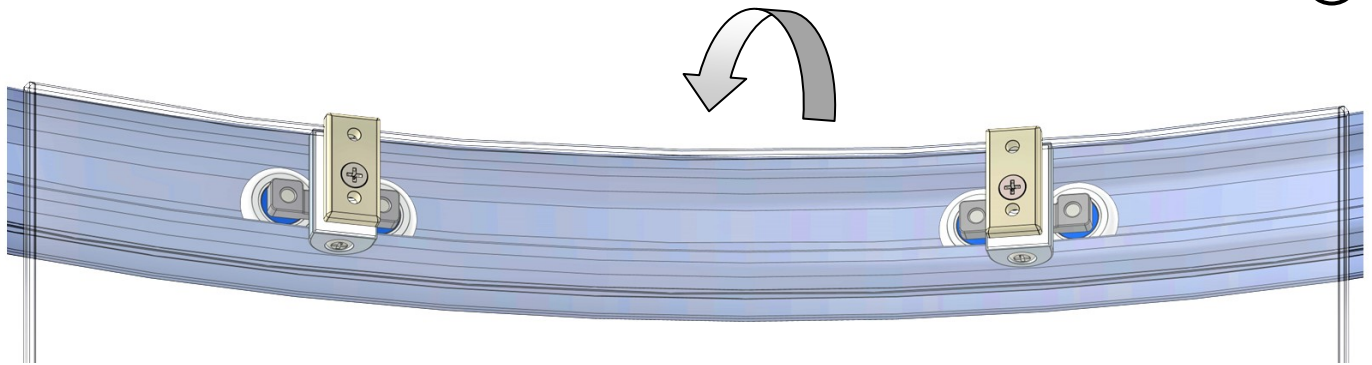
Fit door handle—ensure 'soft' washers are fitted to both glass faces



Fit & fully tighten bottom wheel, including cover.

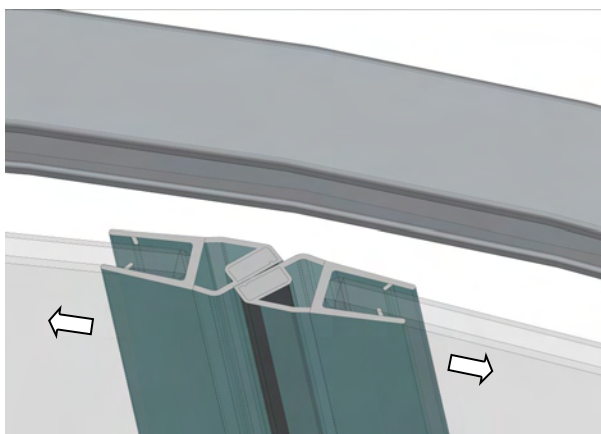
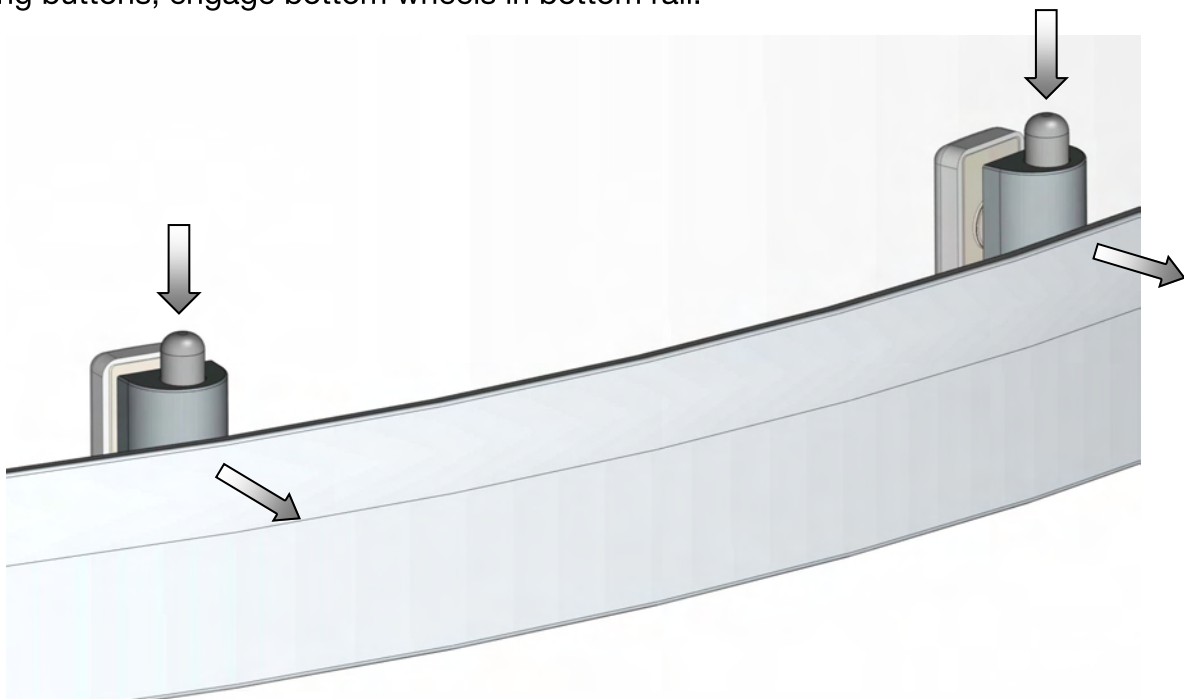
Door Hanging & Seals :

(E)

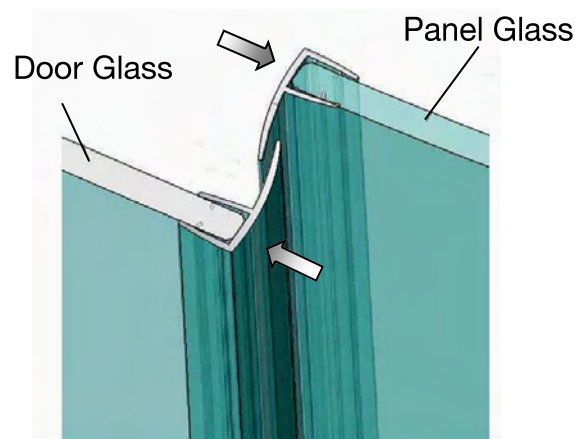


With wheel body loose on glass (screws engaged but not tightened) lift door, engage wheels in top rail & immediately tighten clamping screws.

Using buttons, engage bottom wheels in bottom rail.



Fit magnetic seals to leading edges of doors.



Fit edge seals to trailing edges of doors & open edges of fixed panels.

Seals may be 'Wetted' to ease assembly.

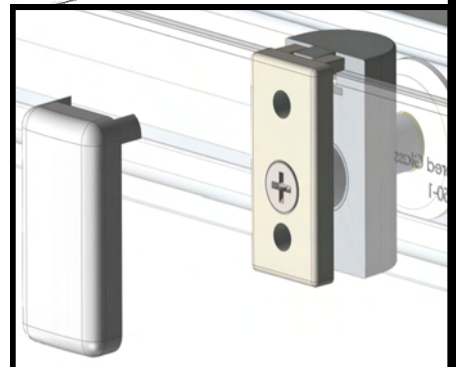
Door Adjustment :

F



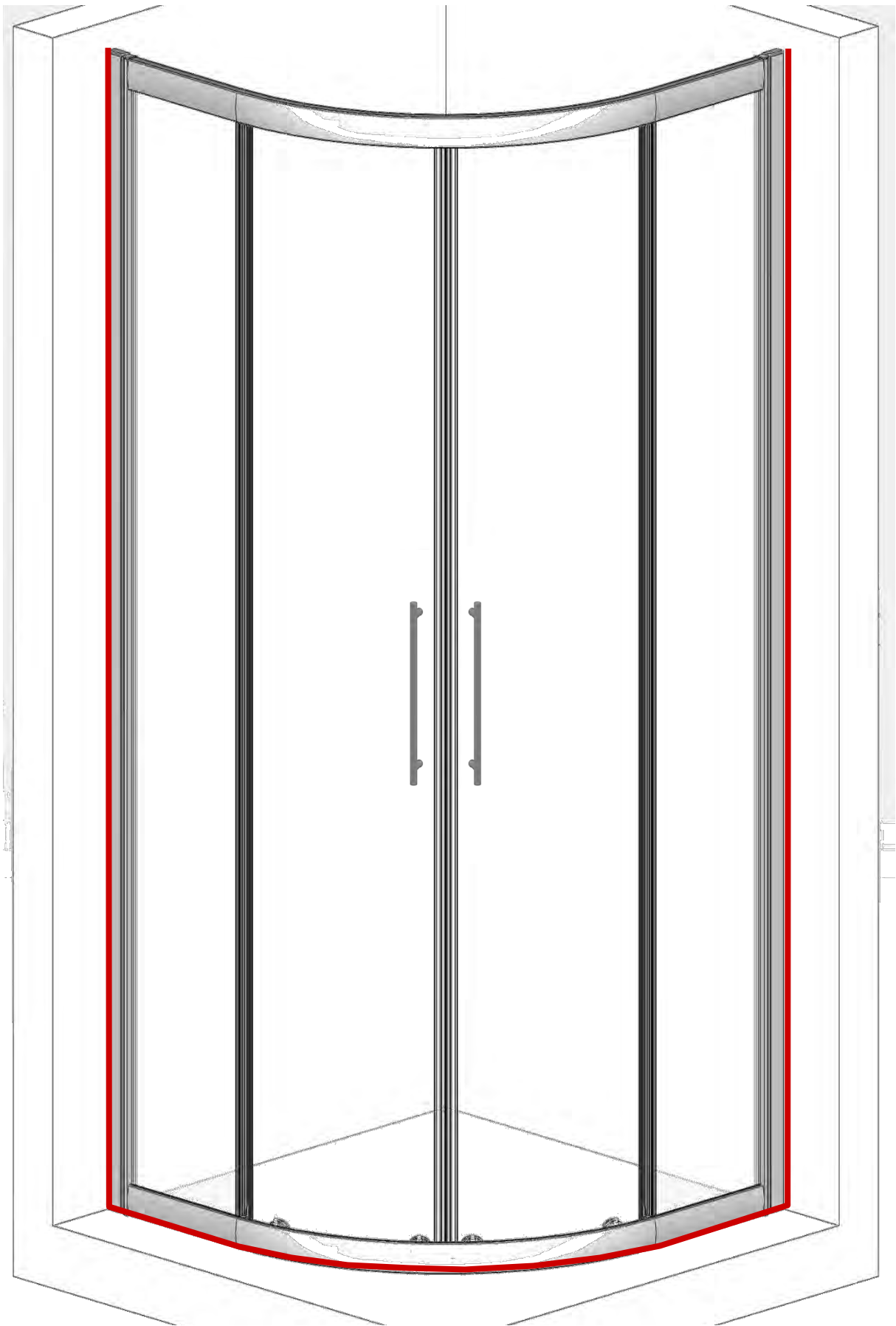
Turn adjusting screws clockwise to raise door. Adjust height & angle until doors run smoothly, magnets are parallel & hold doors closed with no gaps. Check that bottom wheels are engaged securely in bottom track (adjust upward until no wobble in bottom track).

After adjusting, check that clamp screws are tight & fit covers to top wheels



Sealing :

©



Use of good quality silicone sealant & cleaning / degreasing of all joint areas is recommended.

Apply continuous silicone sealant bead as indicated EXTERNALLY ONLY

Basic Troubleshooting :

Door magnetic seals not meeting precisely / not holding :

Ensure magnetic seals are pushed fully onto door edge over entire door length.

Check door alignments & adjust if necessary (see fig F).

Check Magnetic Seal orientations (reverse if necessary).

Door motion noisy / Door not running smoothly / Door loose on bottom rail :

Check for edge seals dragging on glass (can cause 'clicking' noise).

Check top wheels engaged properly in rails & roll smoothly along rails.

Check door height adjustment ~ raise doors so that spring loaded bottom wheels are in contact with & roll smoothly along bottom rail.

Wheels & Grooves are factory greased, however over time this may disperse or become contaminated by dust etc, cleaning of grooves & re application of sanitary silicone based grease will restore & ensure smooth door motion.

Leakage :

The sealing method described in these instructions relies on a continuous seal being applied between shower walls & tray before installing the enclosure (see fig A), it ensures a watertight seal around the perimeter of the enclosure to the shower walls & tray.

In the unlikely event of an enclosure leak, water will be visible on the outside of the enclosure itself, or around the perimeter silicone seal ONLY. Water / moisture appearing outside this area (ie at floor level) is normally due to incorrect tray installation.