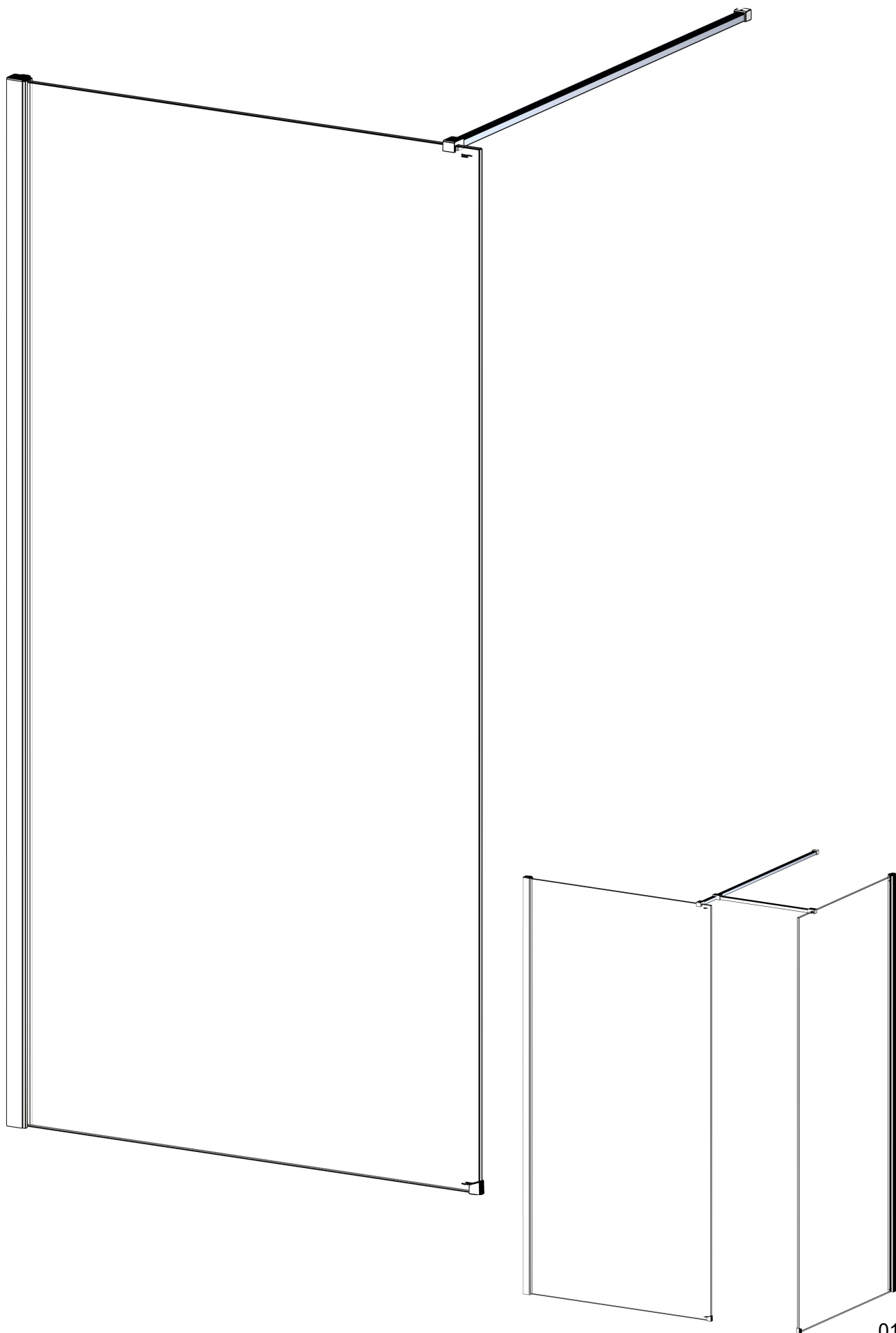


SHOWER SCREEN Installation & Maintenance Instructions



Important Notes :

Please Read Carefully & retain these instructions for Future Reference.

1. For ease & safety we advise that two persons assemble this product.
2. Protect shower tray surfaces at all times.
3. Check for cables, pipes etc before drilling walls.
4. Ensure all surfaces are dry, clean & free of loose debris / dust.
5. Unpack goods with care (small parts can become lodged in packaging & inadvertently discarded). Check parts supplied against parts & fittings listed herein. Damaged parts / omissions may be resolved by calling Helpline.
6. Whilst precautions are taken in manufacture, care must be taken when handling as rail ends may have sharp edges.
7. Before commencing, check :
 - a) shower tray is level & completely sealed to finished / tiled walls.
 - b) finished walls are sound & free of cracks loose tiles / grout.
8. AFTER INSTALLATION, DO NOT 'WET' ENCLOSURE FOR 48 HOURS TO ENSURE FULL CURE OF SILICONE SEALANT.

Use :

General Care & Maintenance.

Provided this product is installed & operated in accordance with these instructions, problems should not arise. However should maintenance be required it should be carried out by a competent person with reference to these instructions. Before any work is carried out the root cause of the problem must be identified. Service engineers are available to consult / carry out remedial work ~ call Helpline.

Cleaning.

(Every one to two weeks depending on local water {hardness} conditions).

All glass panels in this product have a hydrophobic coating aiding 'runoff' of water droplets, reducing the need for frequent cleaning. For best appearance / product life however, regular cleaning is recommended.

Use ONLY mild soap / detergent solutions to clean. Rinse with water, squeegee glass panels & wipe frames dry with a soft cloth. Under no circumstances should abrasive, caustic or scouring products be used. Non compliance with these cleaning instructions may cause plated / painted finishes to deteriorate & could adversely affect safe operation of the enclosure.

Limescale ~ should a build up of limescale occur, remove using a 50:50 solution of white vinegar & water applied with a soft cloth & rinsed / dried thoroughly afterwards.

Daily Care.

To prevent the build up of limescale, do not allow water droplets to dry on glass or frames. After showering, rinse with water, remove droplets from glass with a squeegee & wipe frame with a soft cloth.

Customer Service.

Quality Guarantee : Shower Doors & Enclosures are guaranteed against any manufacturing or material defects for the duration of the warranty. Defects will be resolved free of charge by repairing or replacing parts as we feel necessary. To be 'free of charge' service work must be carried out by approved agents. Call Helpline.

Not Covered by this Guarantee : Damage or defects that result from improper installation, improper use, or lack of maintenance (including limescale buildup). Damage or defects that result from repairs or modifications undertaken by unauthorized persons.

This guarantee is in addition to statutory & other legal rights.

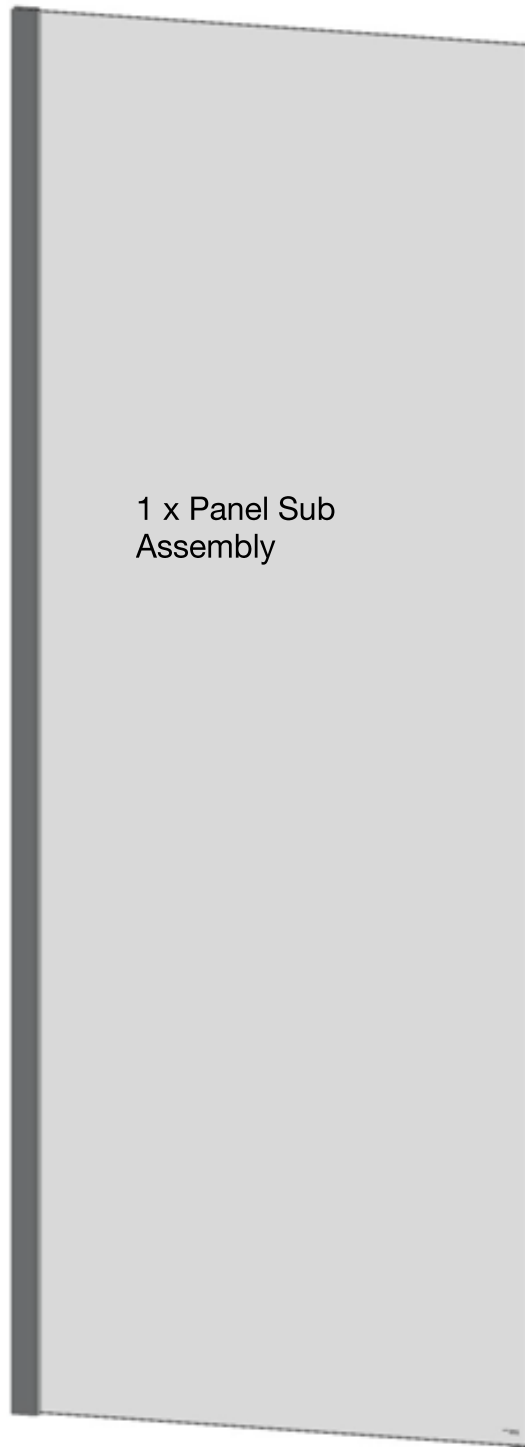
What to do if something goes wrong : Should the product not function correctly on initial use, firstly, contact the installer to check that unit installation & commissioning are in accordance with these instructions. Should this not resolve difficulties or should performance decline, consult 'Troubleshooting' section to see if simple home maintenance is needed.

Alternatively our Helpline staff can assist, or if necessary arrange for a service engineer to visit.

Spares : We maintain extensive spare part stocks. Spares can be ordered / purchased from your retailer in the first instance. Parts will normally be dispatched within two working days from order placement.

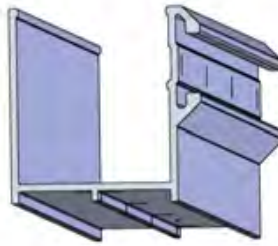
Pro Forma invoices will be sent for cheque payments.

Supplied Parts :



1 x Panel Sub Assembly

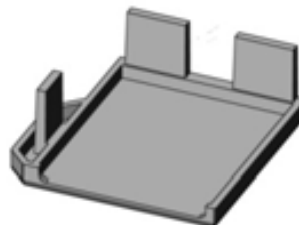
1 x Wall Profile



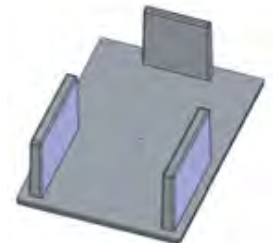
1 x Cover Section



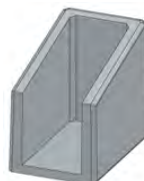
1 x Bracing Bar Assy



2 x Top Caps (Handed Pair)



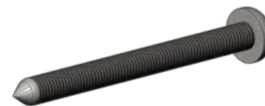
1 x Vertical Cap



1 x Corner Spacer



3,5 x 10 long self tapping screw 4x

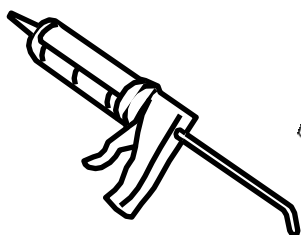


4 x 45 long self tapping screw 4x



7,5 x 39mm Wall Plug 4x

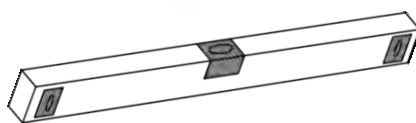
Tools Required



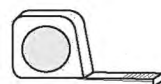
Good quality silicone sealant & applicator



2,5mm Hexagon (Allen) Key



Spirit Level (with vertical 'bubble')



Tape Measure



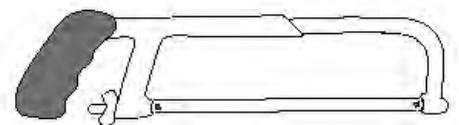
Pencil



Pozi drive Screwdriver



3mm HSS drill bit



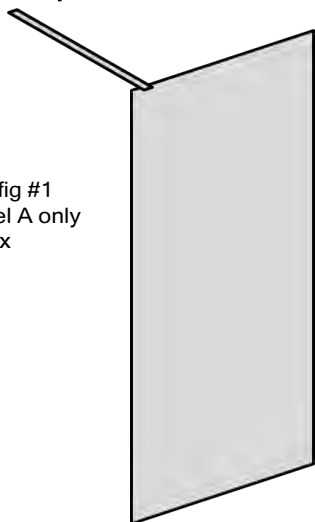
Hacksaw



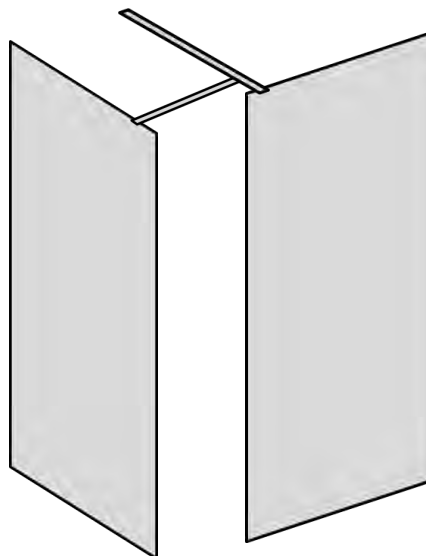
Power drill & 8mm masonry bit

Build Options:

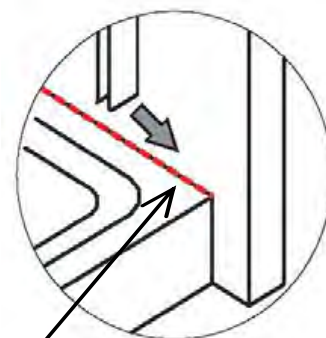
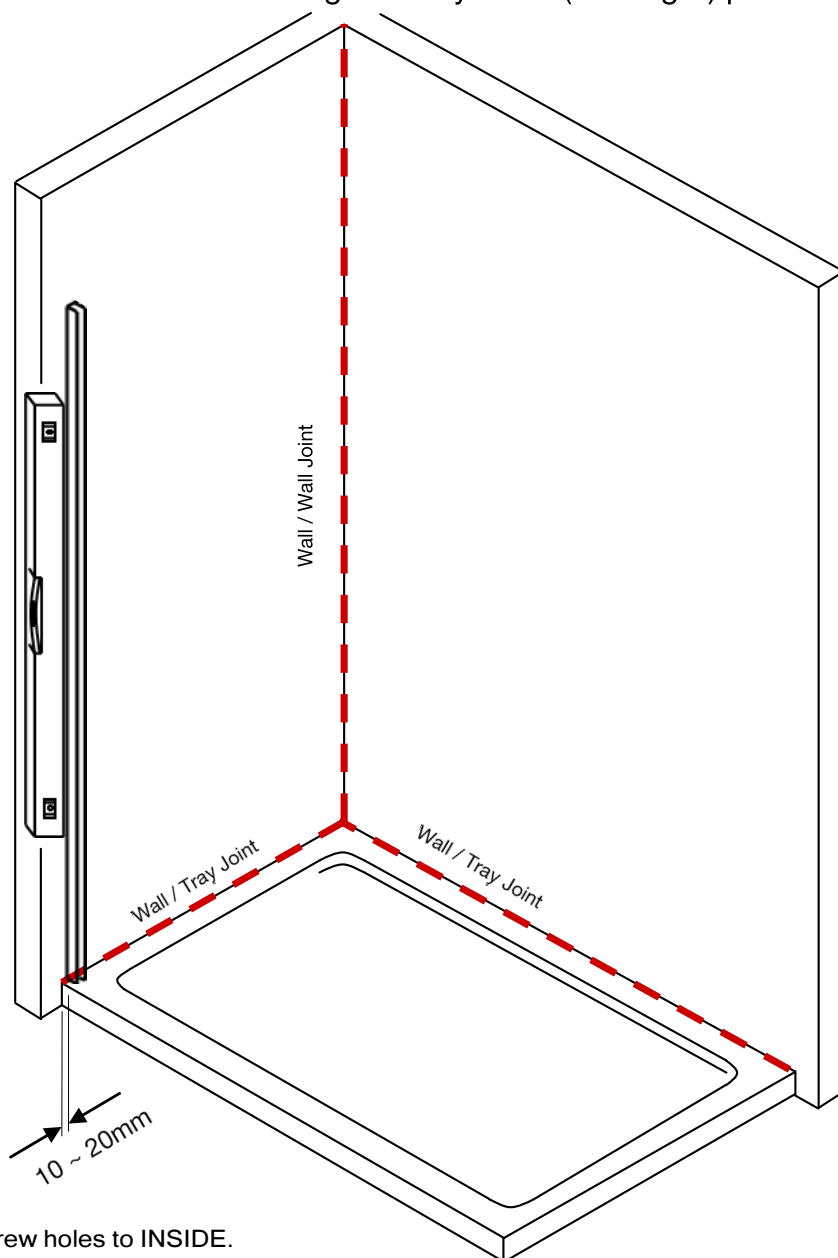
Config #1
panel A only
1 box



Config #2
panels A + A
& 90° joiner



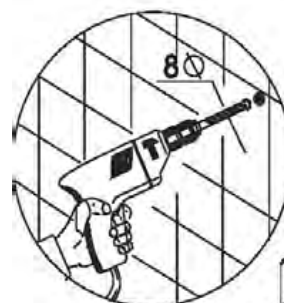
- (A)** Shower Screen is fully reversible, so is suitable for fitting to left or right hand wall.
Ensure tray is correctly levelled & that tray / wall (tile) joints are sealed & cured over entire length of tray sides (See Fig A) prior to fitting enclosure.



Ensure continuous
silicone sealant bead
before fitting !



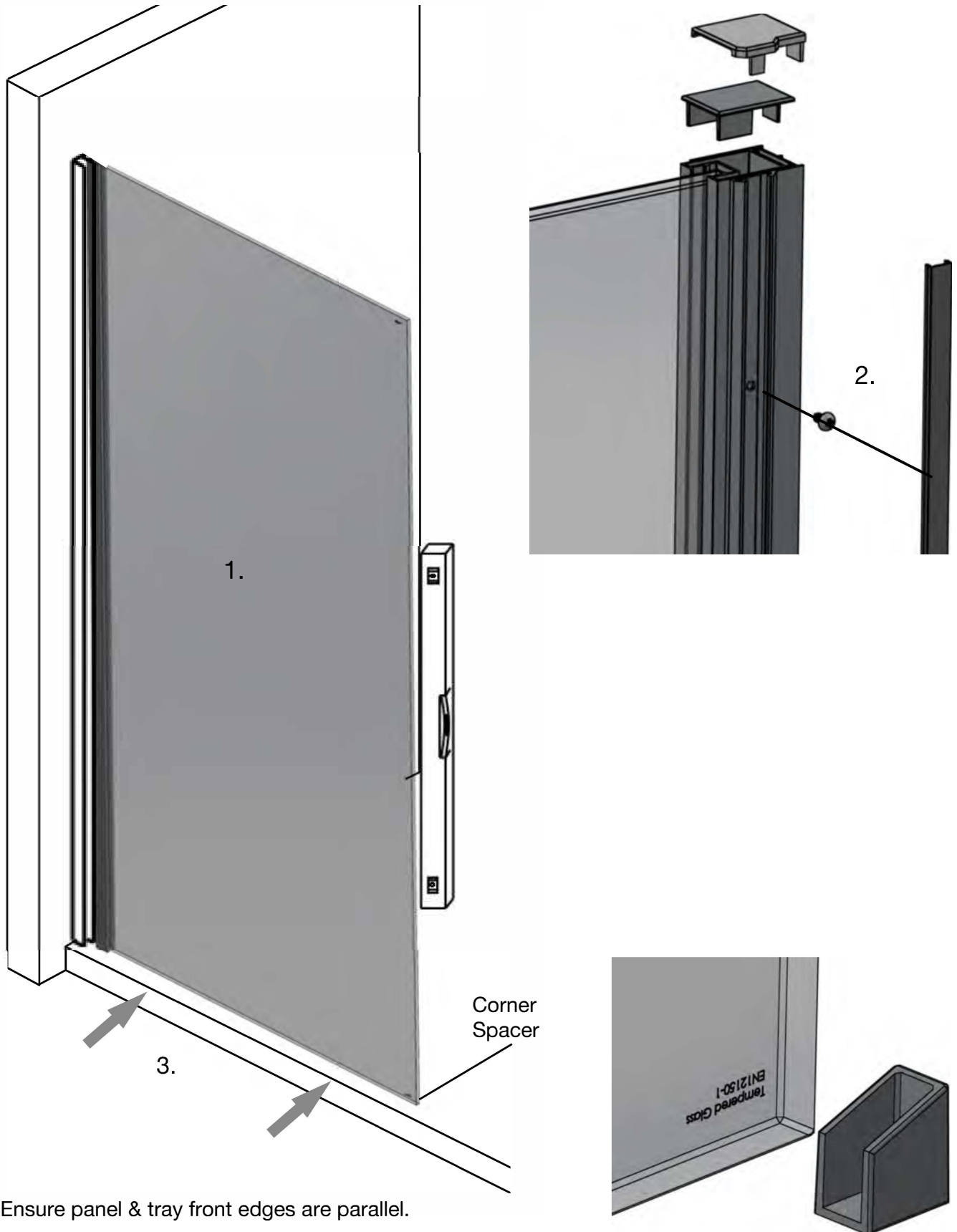
Dia 4 x 45 lg



With screw holes to INSIDE.
Measure, mark, plumb & affix wall profile(s).

Panel set up :

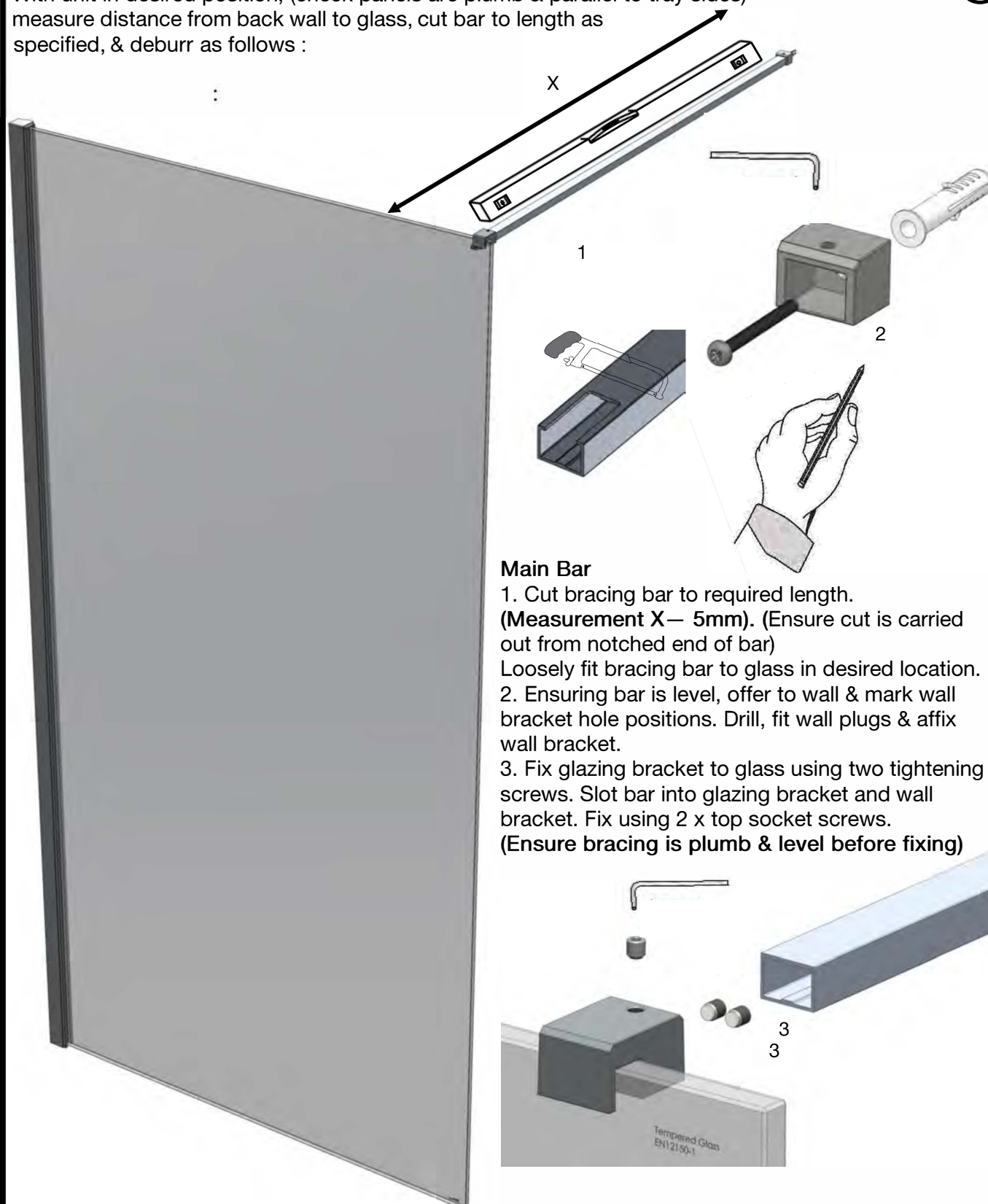
1. Having determined panel orientation, affix corner spacer to outer bottom corner of glass. Carefully lift panel sub assembly into wall profile & down onto tray.
2. Push panel fully back into wall profile & check for plumb.
3. From inside enclosure, using wall profile holes as a guide, drill dia 3mm & affix wall profile to panel using 3,5x10 screws & fit cover section. Fit wall & vertical frame profile cover caps.



3. Ensure panel & tray front edges are parallel.

Bracing Bar (main):

With unit in desired position, (check panels are plumb & parallel to tray sides) measure distance from back wall to glass, cut bar to length as specified, & deburr as follows :



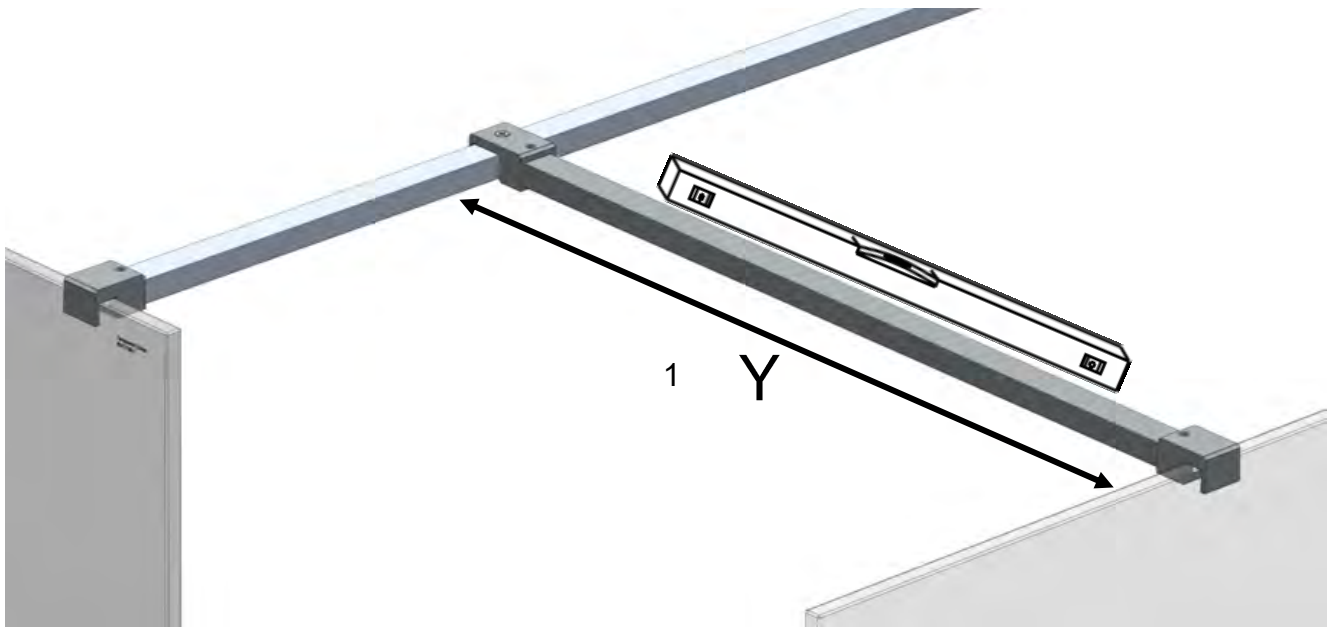
Main Bar

1. Cut bracing bar to required length. (Measurement X— 5mm). (Ensure cut is carried out from notched end of bar)
Loosely fit bracing bar to glass in desired location.
2. Ensuring bar is level, offer to wall & mark wall bracket hole positions. Drill, fit wall plugs & affix wall bracket.
3. Fix glazing bracket to glass using two tightening screws. Slot bar into glazing bracket and wall bracket. Fix using 2 x top socket screws. (Ensure bracing is plumb & level before fixing)

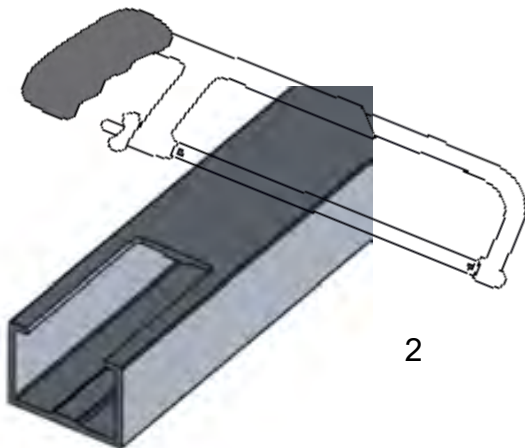
Bracing Bar (side panel):

Ⓓ

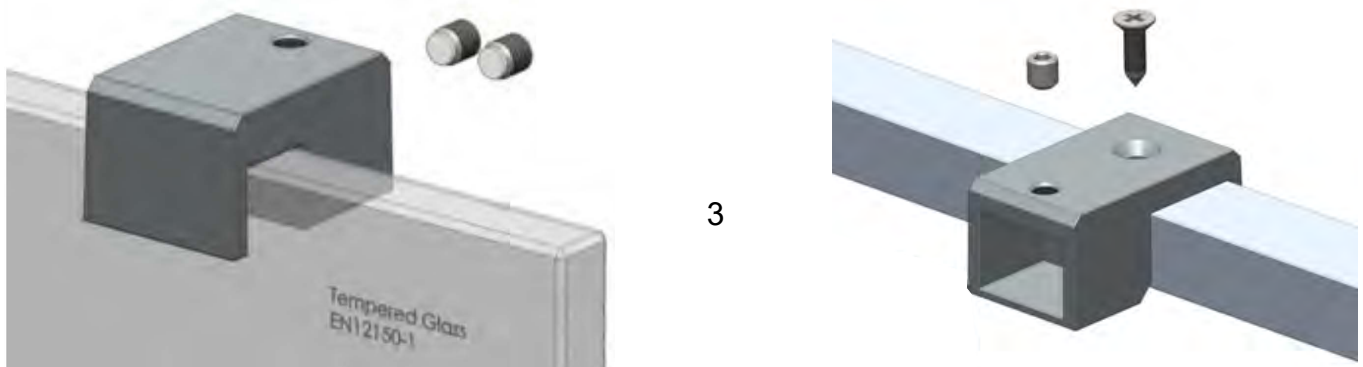
1. With both panels in desired position, measure distance (Y) between main bracing bar & side panel glass.



2. Measuring from PLAIN end of bracing bar, mark & cut bar to **Y-6mm**. Carefully deburr the usable bar cut end. Remove (recycle) the notched end.



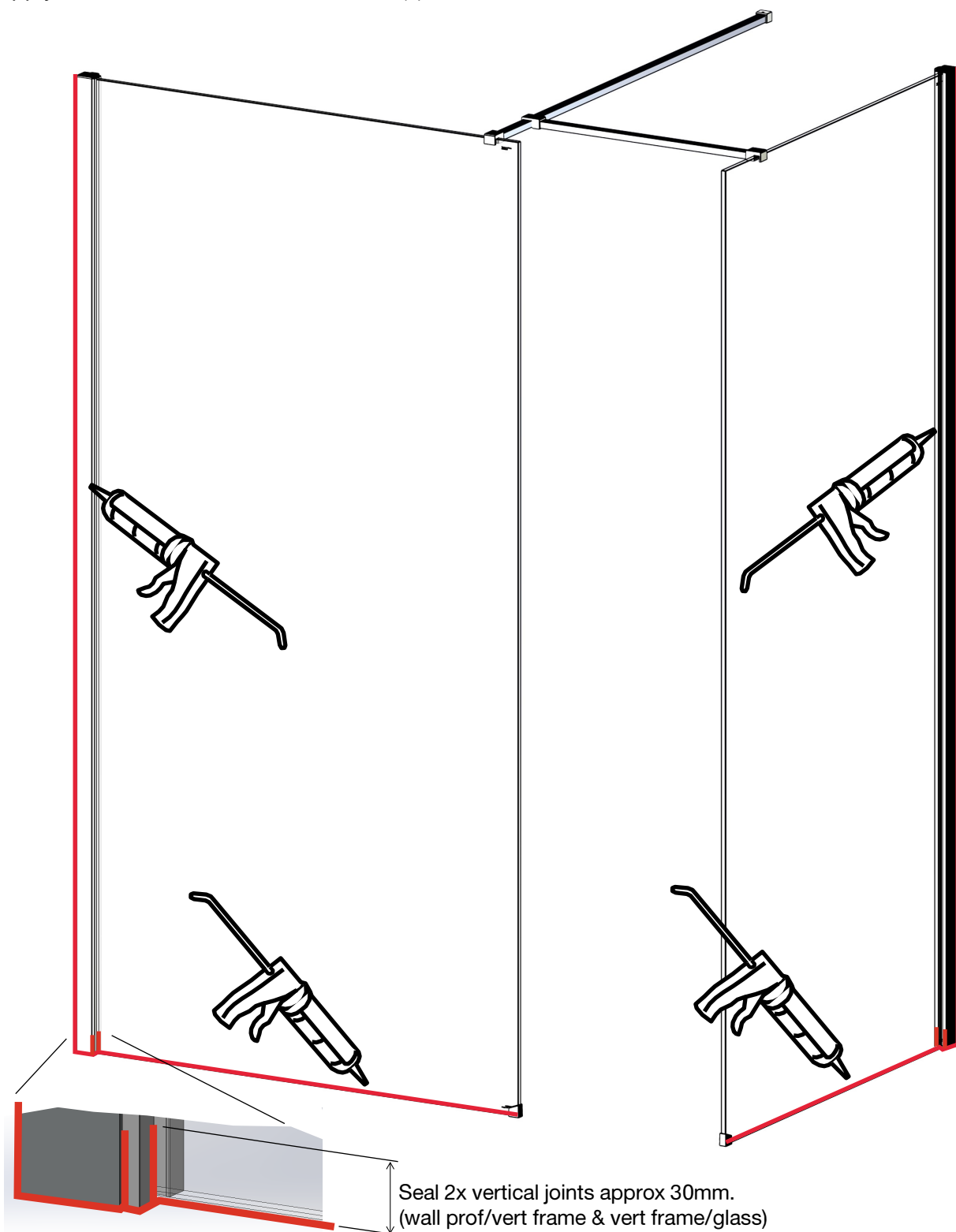
3. Determine location for the side panel bar assembly (best stability is with bar toward front). Affix glazing clamp & fully tighten to side panel glass using 2x grub screws, & using 90° bar joiner as a guide, mark & drill dia 3mm hole through top wall (only) of main bar, affix with csk screw.



4. Manipulating the side panel as necessary, insert bar into both joiner & glazing clamp & retain bar by tightening grub screws from above.

Sealing:

The use of good quality silicone sealant, & cleaning/degreasing of all joint areas is recommended. Apply continuous silicone sealant bead(s) as indicated, EXTERNALLY ONLY.



Basic Troubleshooting :

Leakage :

The sealing method described in these instructions relies on a continuous seal being applied between shower walls & tray before installing the enclosure (see fig A), it ensures a watertight seal around the perimeter of the enclosure to the shower walls & tray. In the unlikely event of an enclosure leak, water will be visible on the outside of the enclosure itself, or around the perimeter silicone seal ONLY. Water / moisture appearing outside this area (ie at floor level) is normally due to incorrect tray installation.