

# CORNER ENTRY Installation & Maintenance Instructions



## **Important Notes :**

Please Read Carefully & retain these instructions for Future Reference.

1. For ease & safety we advise that two persons assemble this product.
2. Protect shower tray surfaces at all times.
3. Check for cables, pipes etc before drilling walls.
4. Ensure all surfaces are dry, clean & free of loose debris / dust.
5. Unpack goods with care (small parts can become lodged in packaging & inadvertently discarded). Check parts supplied against parts & fittings listed herein. Damaged parts / omissions may be resolved by calling Helpline.
6. Whilst precautions are taken in manufacture, care must be taken when handling as rail ends may have sharp edges.
7. Before commencing, check :
  - a) shower tray is level & completely sealed to finished / tiled walls.
  - b) finished walls are sound & free of cracks loose tiles / grout.
8. **AFTER INSTALLATION, DO NOT 'WET' ENCLOSURE FOR 48 HOURS TO ENSURE FULL CURE OF SILICONE SEALANT.**

## **Use :**

### **General Care & Maintenance.**

Provided this product is installed & operated in accordance with these instructions, problems should not arise. However should maintenance be required it should be carried out by a competent person with reference to these instructions. Before any work is carried out the root cause of the problem must be identified. Service engineers are available to consult / carry out remedial work ~ call Helpline.

### **Cleaning.**

(Every one to two weeks depending on local water {hardness} conditions).

All glass panels in this product have a hydrophobic coating aiding 'runoff' of water droplets, reducing the need for frequent cleaning. For best appearance / product life however, regular cleaning is recommended.

Use ONLY mild soap / detergent solutions to clean. Rinse with water, squeegee glass panels & wipe frames dry with a soft cloth. Under no circumstances should abrasive, caustic or scouring products be used. DO NOT use 'spray & leave' type cleaning products. Non compliance with these cleaning instructions may cause plated / painted finishes to deteriorate & could adversely affect safe operation of the enclosure.

Limescale ~ should a build up of limescale occur, remove using a 50:50 solution of white vinegar & water applied with a soft cloth & rinsed / dried thoroughly afterwards.

### **Daily Care.**

To prevent the build up of limescale, do not allow water droplets to dry on glass or frames. After showering, rinse with water, remove droplets from glass with a squeegee & wipe frame with a soft cloth.

### **Customer Service.**

**Quality Guarantee :** Shower Doors & Enclosures are guaranteed against any manufacturing or material defects for the duration of the warranty. Defects will be resolved free of charge by repairing or replacing parts as we feel necessary. To be 'free of charge' service work must be carried out by approved agents. Call Helpline.

**Not Covered by this Guarantee :** Damage or defects that result from improper installation, improper use, or lack of maintenance (including limescale buildup). Damage or defects that result from repairs or modifications undertaken by unauthorized persons.

This guarantee is in addition to statutory & other legal rights.

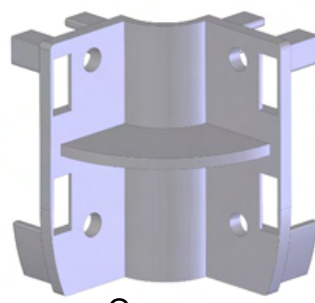
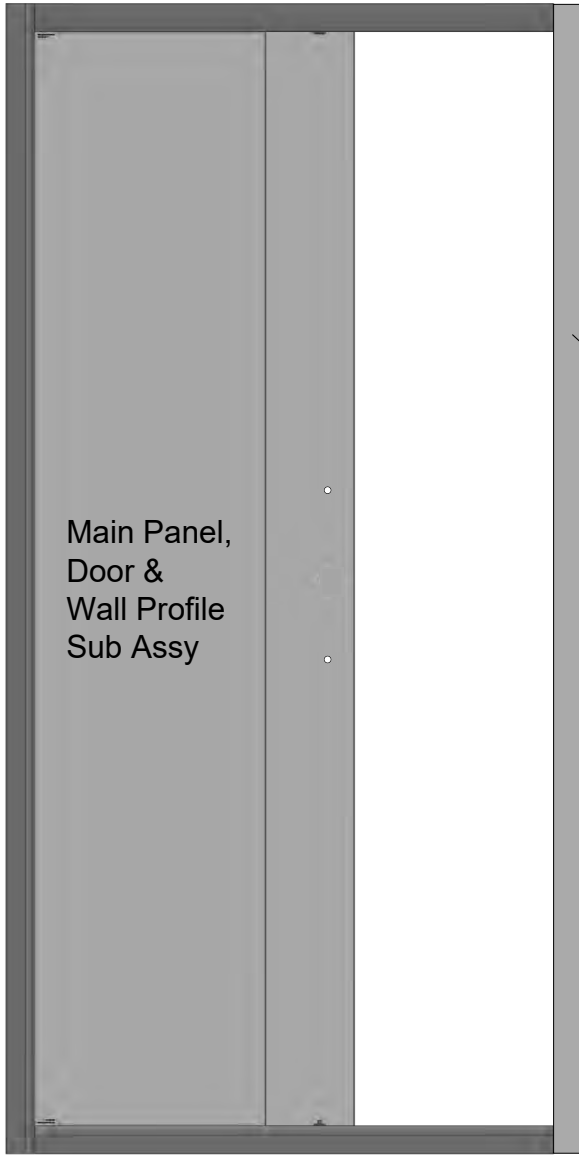
**What to do if something goes wrong :** Should the product not function correctly on initial use, firstly, contact the installer to check that unit installation & commissioning are in accordance with these instructions. Should this not resolve difficulties or should performance decline, consult 'Troubleshooting' section to see if simple home maintenance is needed.

Alternatively our Helpline staff can assist, or if necessary arrange for a service engineer to visit.

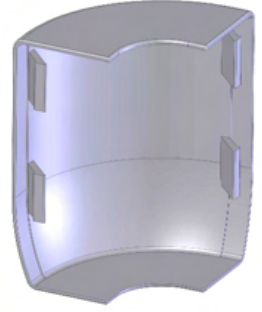
**Spares :** We maintain extensive spare part stocks. Spares can be ordered / purchased from your retailer in the first instance. Parts will normally be dispatched within two working days from order placement.

Pro Forma invoices will be sent for cheque payments.

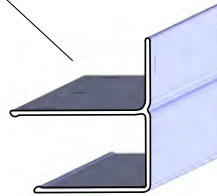
**Supplied Parts :**



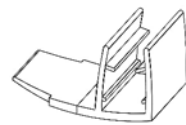
Corner Bracket



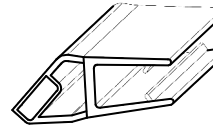
Corner Cover



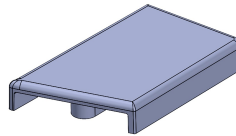
Wall Profile: supplied affixed to main panel sub assy as shown. (REMOVE from panel s/assy for subsequent use).



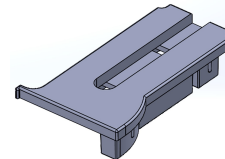
Edge Seal 2x



Magnetic Seal



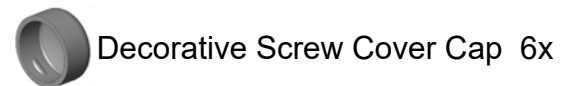
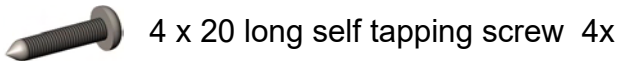
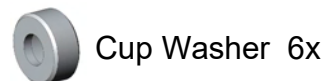
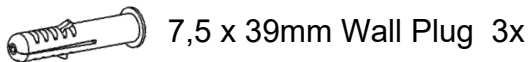
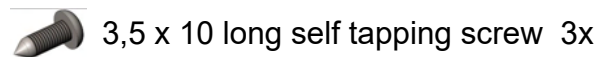
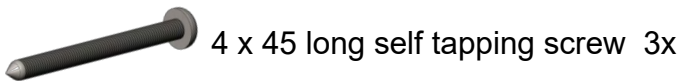
Top Cap. wall profile (handed pair)



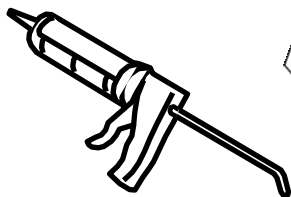
Top Cap. vert frame (handed pair)



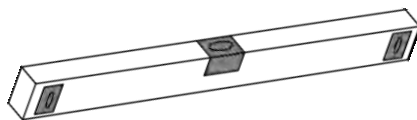
Handle Kit



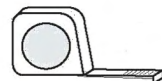
**Tools Required**



Good quality silicone sealant & applicator



Spirit Level (with vertical 'bubble')



Tape Measure



Pencil



Pozi drive Screwdriver

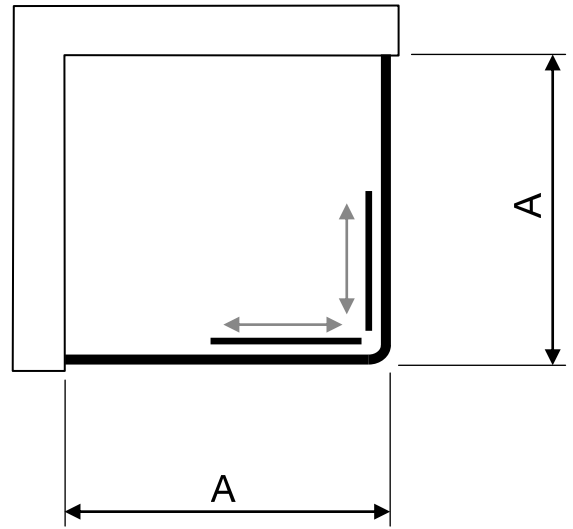


3mm HSS drill bit



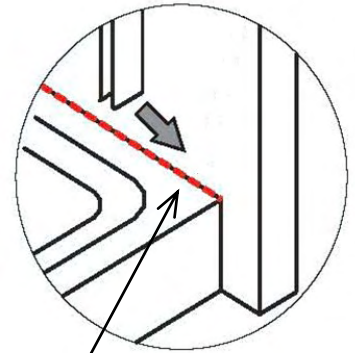
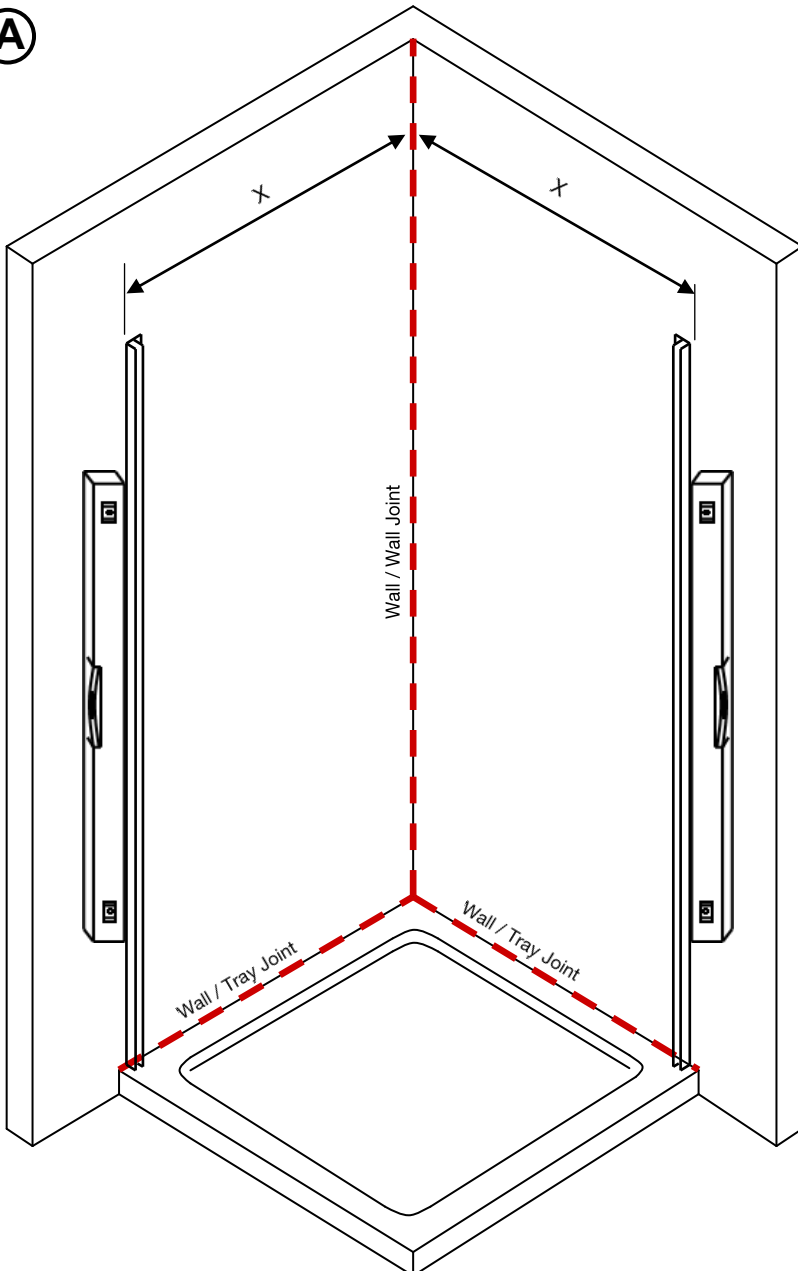
Power drill & 8mm masonry bit

Standard Sizes	Adjustment Range (Dim'n A)	Dim'n X (Wall profile outside face)
750mm	720-740mm	730
800mm	760-780mm	770
900mm	860-880mm	870
1000mm	960-980mm	970

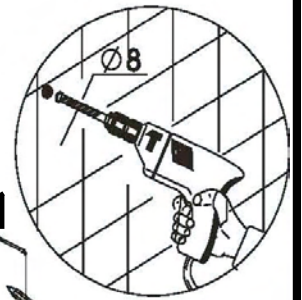


Ensure tray is correctly levelled & that tray / wall (tile) joints are sealed & cured over entire length of tray sides (See Fig A) prior to fitting enclosure.  
**DO NOT SEAL TRAY EDGES UPTO A FITTED ENCLOSURE !**

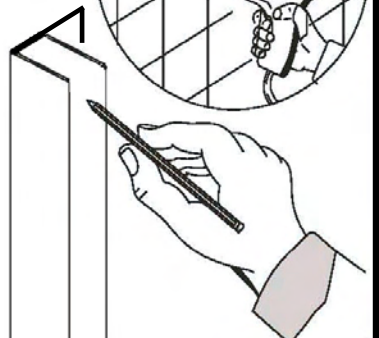
**(A)**



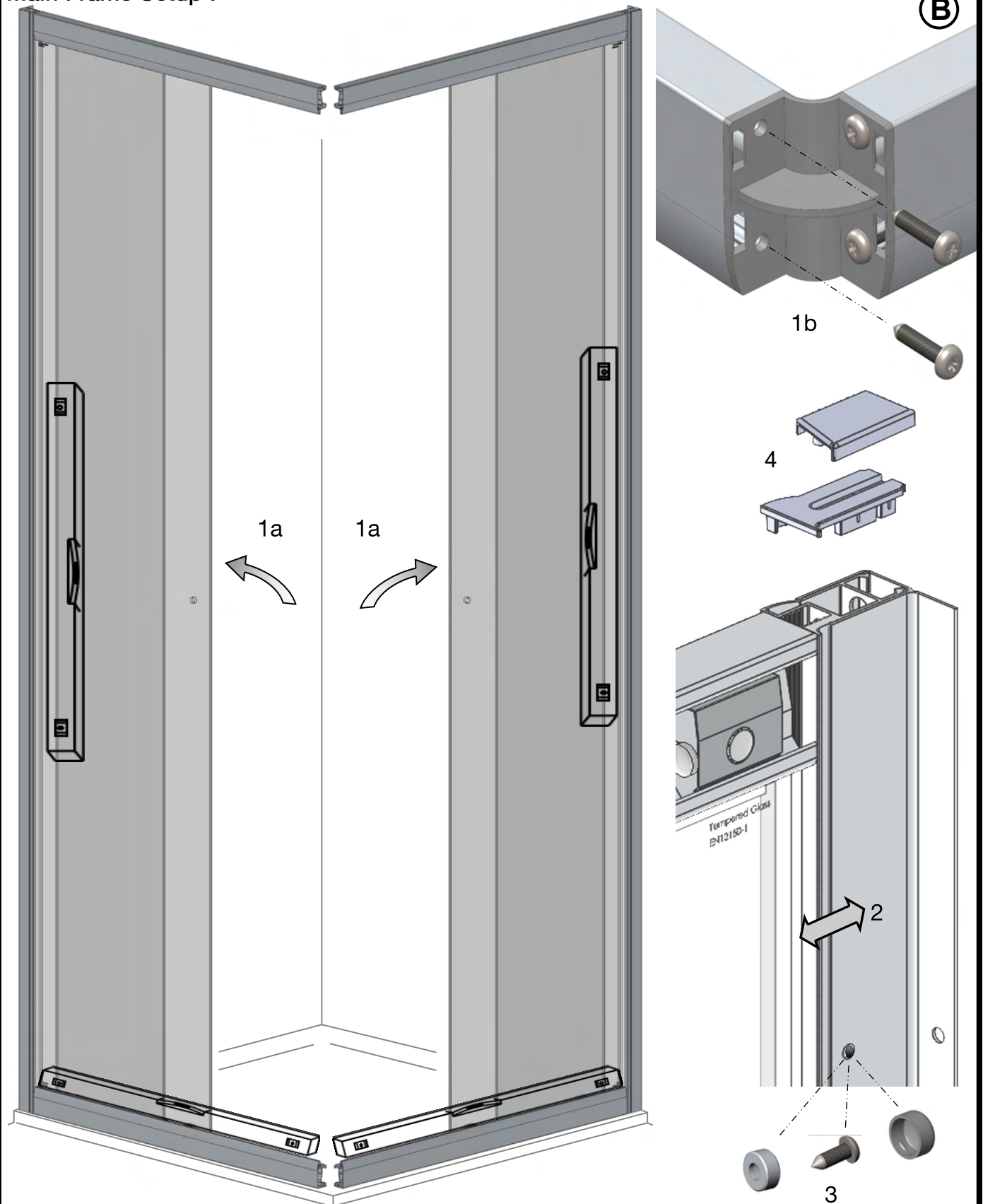
Ensure continuous silicone sealant bead before fitting wall rails



Wall profile orientation : Flange to shower side. Measure & mark wall rail positions.  
 Mark fixing holes, drill, fit wall plugs & affix both wall profiles.

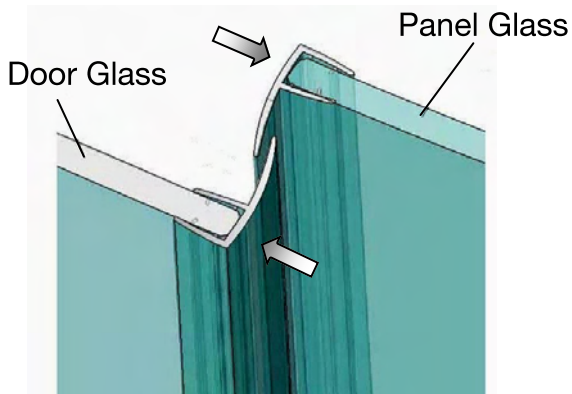
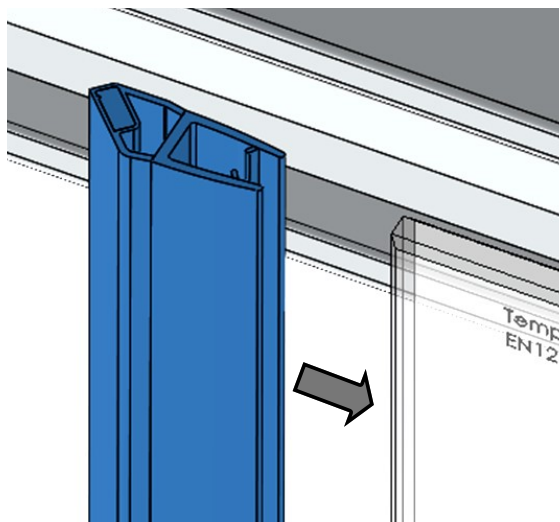


Main Frame Setup :



1. Lift panels over tray & insert into wall profiles ~ push back fully. Affix corner brackets to open rail ends as shown using 4 x 20 pan head screws.
2. Manipulate frame within wall profiles until even gap is achieved between frame & tray edges, & ensure entire frame is plumb.
3. From inside enclosure, using the wall profile holes as a guide, drill (3mm) & using cup washers & decorative caps, screw frame to wall profiles (6 places).
4. Fit Top Caps to frame vertical & wall profiles

### Door Fitting & Adjustment :



Fit edge seals to trailing edges of doors & open edges of fixed panels.

Seals may be 'Wetted' to ease assembly.

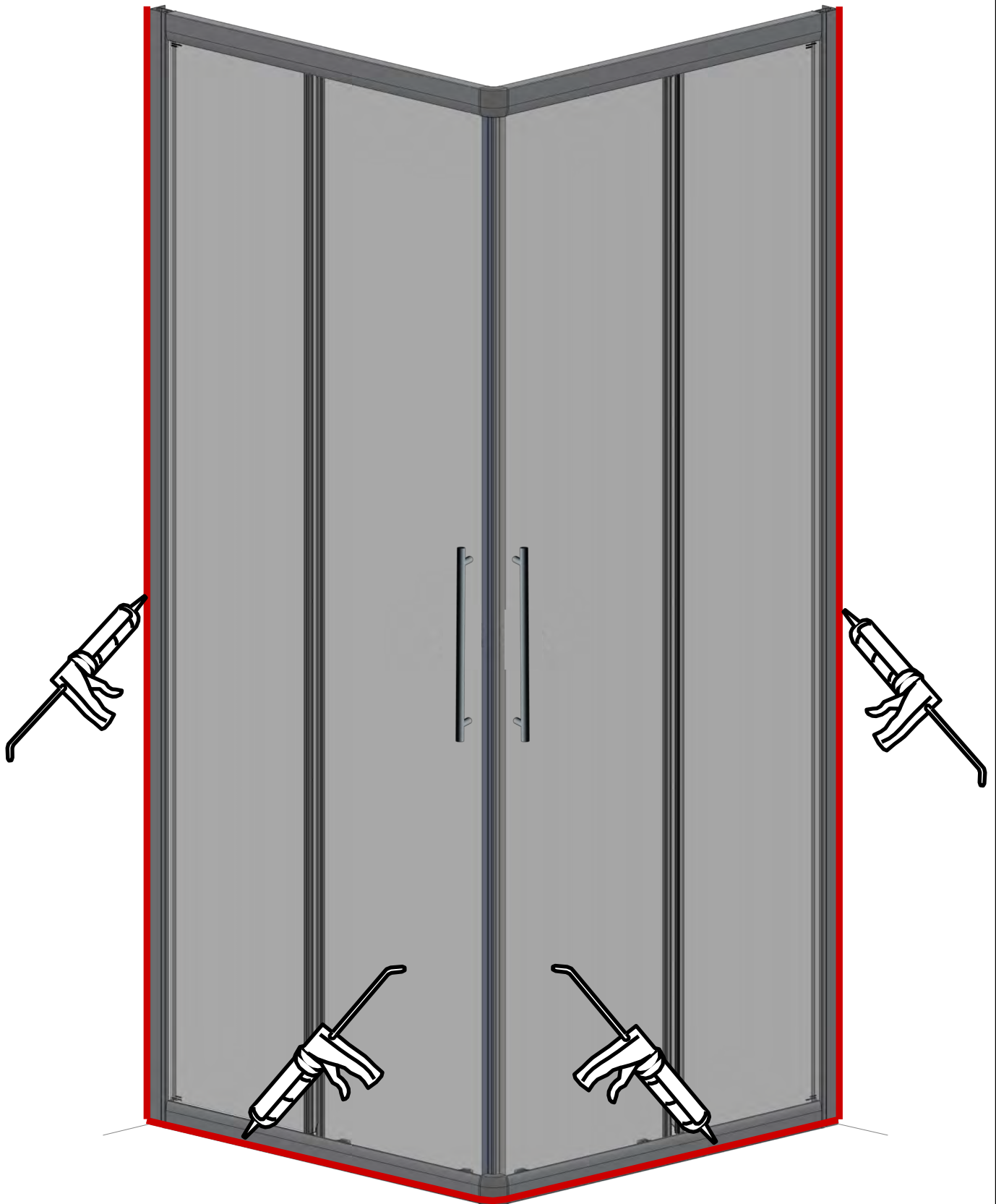
Fit magnetic seal to leading edge of doors.



Turn adjusting screws clockwise to raise door. Adjust height & angle until doors run smoothly, magnets are parallel & hold doors closed with no gaps. Check that bottom wheels are engaged securely in bottom track (adjust upward until no wobble in bottom track).

Sealing :

Ⓓ



Use of good quality silicone sealant & cleaning / degreasing of all joint areas is recommended.

Apply continuous silicone sealant bead as indicated EXTERNALLY ONLY

### **Basic Troubleshooting :**

Door magnetic seals not meeting precisely / not holding :

Ensure magnetic seals are pushed fully onto door edge over entire door length.

Check door alignments & adjust if necessary (see fig C).

Check Magnetic Seal orientations (reverse if necessary).

Door motion noisy / Door not running smoothly / Door loose on bottom rail :

Check for edge seals dragging on glass (can cause 'clicking' noise).

Check top wheels engaged properly in rails & roll smoothly along rails.

Check door height adjustment ~ raise doors so that spring loaded bottom wheels are in contact with & roll smoothly along bottom rail.

Wheels & Grooves are factory greased, however over time this may disperse or become contaminated by dust etc, cleaning of grooves & re application of sanitary silicone based grease will restore & ensure smooth door motion.

Leakage :

The sealing method described in these instructions relies on a continuous seal being applied between shower walls & tray before installing the enclosure (see fig A), it ensures a watertight seal around the perimeter of the enclosure to the shower walls & tray.

In the unlikely event of an enclosure leak, water will be visible on the outside of the enclosure itself, or around the perimeter silicone seal ONLY. Water / moisture appearing outside this area (ie at floor level) is normally due to incorrect tray installation.