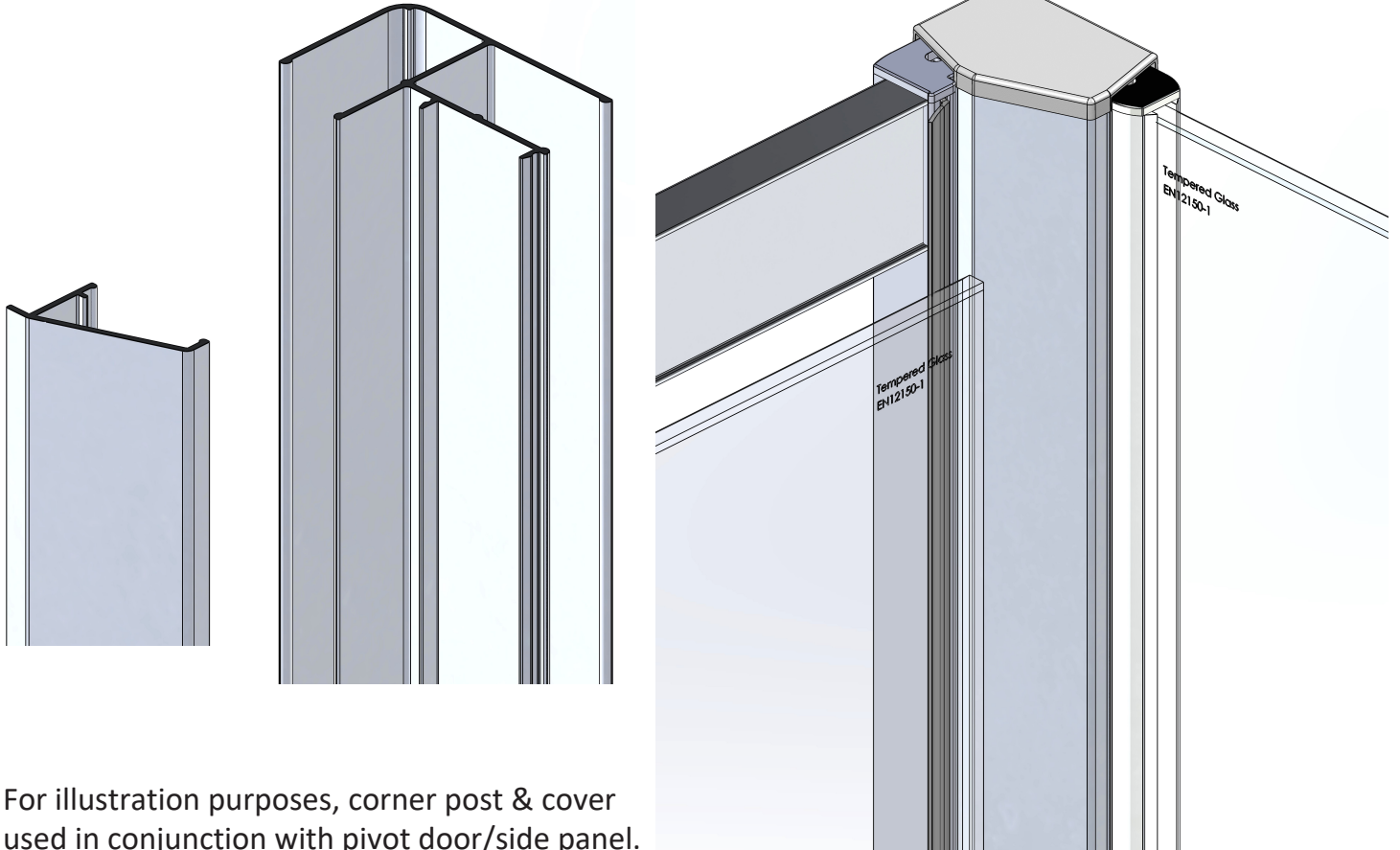
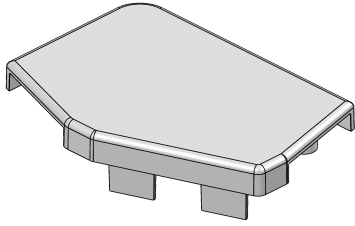


Corner Post & Cover Section.

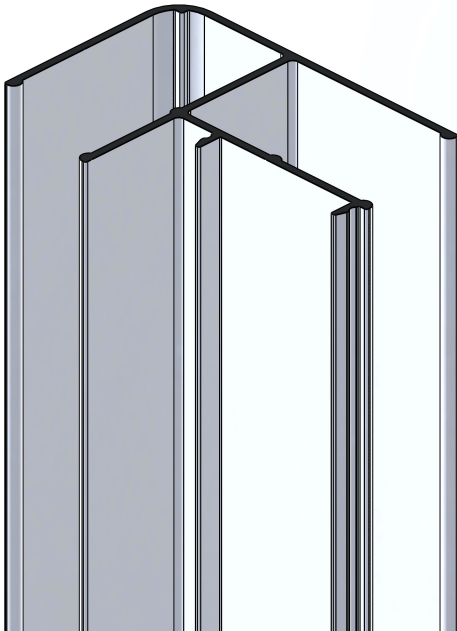
Installation & Maintenance Instructions



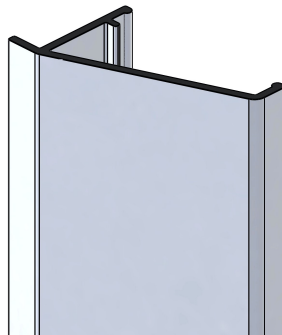
For illustration purposes, corner post & cover used in conjunction with pivot door/side panel.

Use these instructions in conjunction with corresponding door / panel instructions.

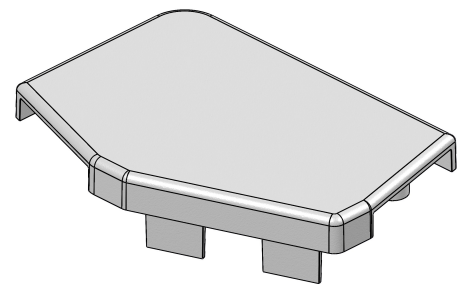
Supplied Parts :



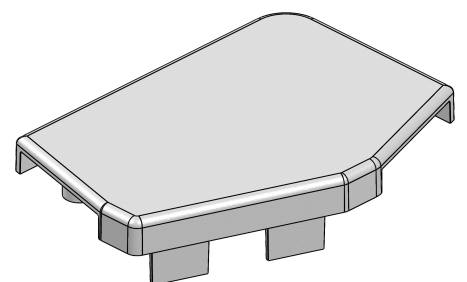
Corner Post 1x



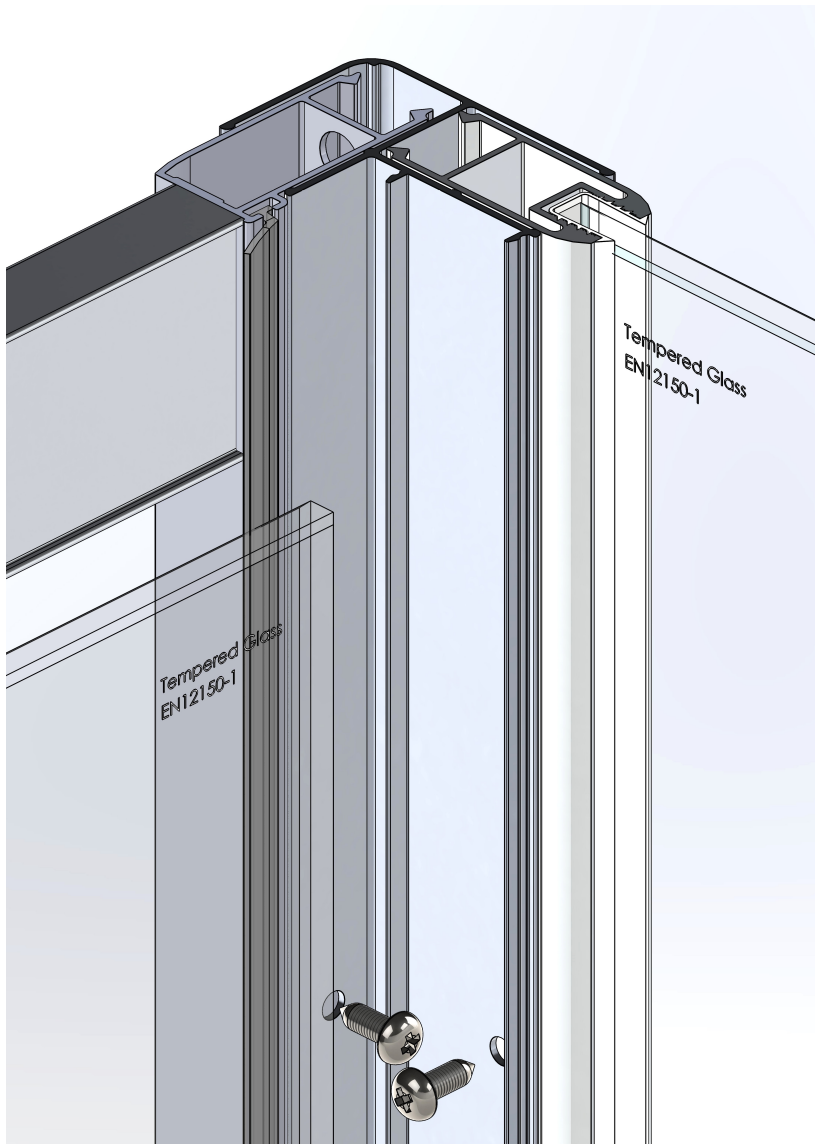
Cover Profile 1x



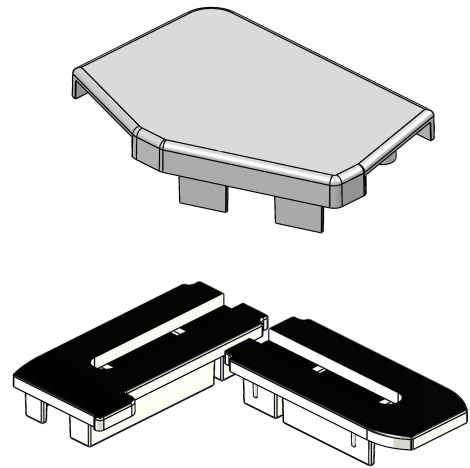
Top Cap LH 1x



Top Cap RH 1x



Finalise door / panel install & positioning, then affix frames to corner post using 3.5 x 10mm long screws.



Align & fit cover sections.
Fit all top caps.

