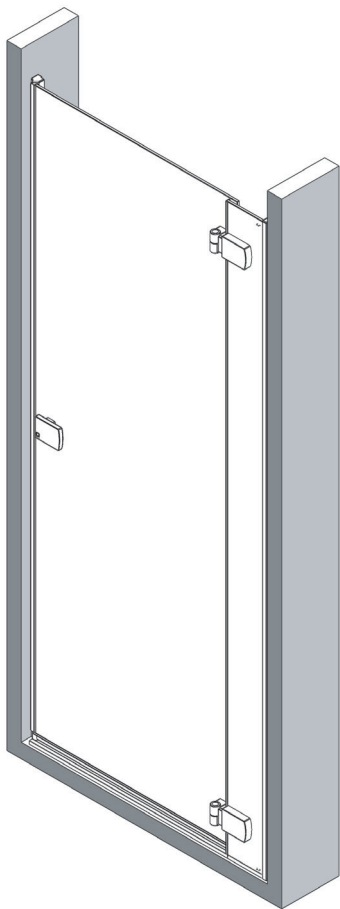


Island Range Hinge Door - Barbados

Installation & Maintenance Instructions

03.22



LAKES
SHOWERING SPACES

IMPORTANT NOTES :

Please read carefully & retain these instructions for future reference.

1. For ease & safety we advise that two persons assemble this product.
2. Protect shower tray surfaces at all times.
3. Exposed glass corners / edges MUST NOT contact hard surfaces at any time.
4. Check for cables, pipes etc before drilling walls.
5. Ensure all surfaces are dry, clean & free of loose debris / dust.
6. Unpack goods with care (small parts can become lodged in packaging & inadvertently discarded).
Check parts supplied against parts & fittings listed herein.
Damaged parts / omissions may be resolved by calling Lakes Bathrooms Helpline.
7. Whilst precautions are taken in manufacture, care must be taken when handling as rail ends may have sharp edges.
8. Before commencing, check :
 - a) shower tray (if used) is level & completely sealed to finished / tiled walls, &
 - b) finished walls are sound & free of cracks, loose tiles / grout.
9. AFTER INSTALLATION, DO NOT 'WET' ENCLOSURE FOR 48 HOURS TO ENSURE FULL CURE OF SILICONE SEALANT.

USE :

General Care & Maintenance.

Provided this product is installed & operated in accordance with these instructions, problems should not arise. However should maintenance be required it should be carried out by a competent person with reference to these instructions. Before any work is carried out the root cause of the problem must be identified. Lakes Bathrooms service engineers are available if necessary to consult / carry out remedial work. Call Lakes Bathrooms HELPLINE.

CLEANING :

(Every one to two weeks depending on local water {hardness} conditions).

All glass panels in this product have a hydrophobic coating aiding 'runoff' of water droplets, reducing the need for frequent cleaning. For best appearance / product life however, regular cleaning is recommended. Use ONLY mild soap / detergent solutions to clean. Rinse with water, squeegee glass panels & wipe frames dry with a soft cloth. Under no circumstances should abrasive, caustic or scouring products be used. Non compliance with these cleaning instructions may cause decorative finishes to deteriorate & could adversely affect safe operation of the enclosure.

Daily Care :

To prevent the build up of limescale, do not allow water droplets to dry on glass or frames. After showering, rinse with water, remove droplets from glass with a squeegee & wipe frame with a soft cloth.

Customer Service :

Quality Guarantee : Lakes Bathrooms Ltd guarantee Shower Doors & Enclosures against any manufacturing or material defects for the lifetime of the product. We will resolve defects free of charge by repairing / replacing parts as we feel necessary. To be 'free of charge' service work must be carried out by Lakes Bathrooms or approved agents. Seals are considered 'wear & tear' parts, as such, they are guaranteed for 12 months from purchase.

Not Covered by this Guarantee : Damage or defects that result from improper installation, improper use, or lack of maintenance (including limescale buildup). Damage or defects that result from repairs / modifications undertaken by unauthorized persons. This guarantee is in addition to statutory & other legal rights. What to do if something goes wrong : Should the product not function correctly on initial use, firstly, contact the installer to check that unit installation & commissioning are in accordance with these instructions. Should this not resolve difficulties or should performance decline, consult 'Troubleshooting' section to see if simple home maintenance is needed. Alternatively our HELPLINE staff can assist, or if necessary arrange for a service engineer to visit.

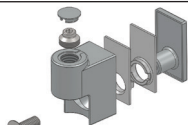
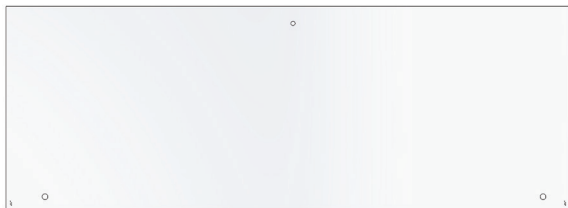
Spares : We maintain extensive spare part stocks. Spares can be ordered / purchased from your retailer in the first instance. Parts will normally be dispatched within two working days from order placement.

Supplied Parts :

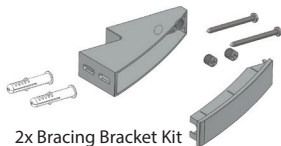
1x Hinge Panel
Sub Assy



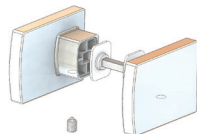
1x Door Glass



2x Upper (Door)
Hinge Kit



2x Bracing Bracket Kit
(8000-54)



1x Handle Kit (8100)



2x Wall Profile
(8031-C)



1x Striker Rail
(8033) &
Magnet Assy
(8017)

Not used when fitting with side panel



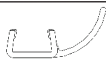
1x Bottom Channel
(8036-122)



1x Threshold Trim
(8037)



1x Magnetic Seal
(8015-A) 1960mm



1x Door Edge Seal
(8020)



2x Cover Strip
(8030)



1x Door Bottom
Seal (8019)



2x Top Cap
(Striker Rail)
Handed Pair
(8000-05 & 06)



2x Top Cap
(Wall Profile)
(8001-01)



2x Top Cap
(Wall Profile)
Handed Pair
(8000-03 & 04)



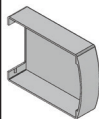
8x M4 x 45mm Screw (F017)



8x Wall Plug (F013)



6x M3.5 x 8mm Screw (F202)



2x Hinge Cover
(8000-152)



1x Spacing Block
(8000-161)

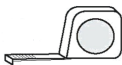


1x 4mm Ball Type
Hexagon (Allen) Key
(Retain for future hinge adjustment)

Tools Required :



Spirit Level (with vertical bubble)



Tape Measure



Pencil



Power Drill &
8mm Masonry Bit



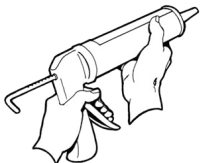
3mm HSS Drill Bit



Pozidriv Screwdriver



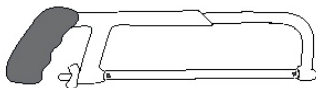
2.5mm & 5mm
Allen Keys



Good Quality Silicone
Sealant & Applicator



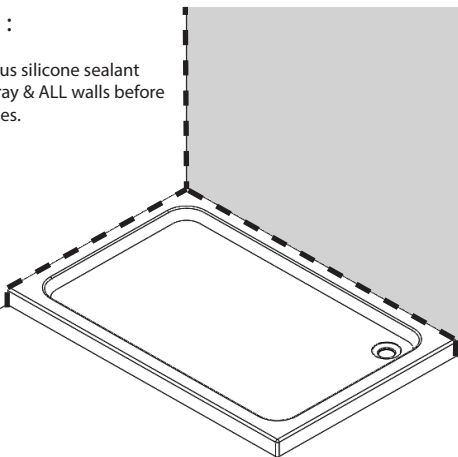
Sharp Knife



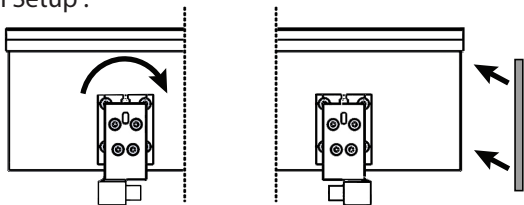
Hacksaw (or suitable metal
cutting 'chopsaw')

Setting Out :

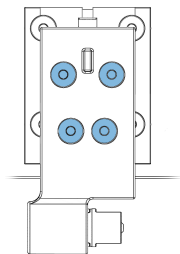
Ensure continuous silicone sealant bead between tray & ALL walls before fitting wall profiles.



Hinge Panel Setup :

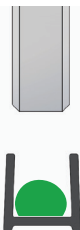


Hinge panel sub assembly is supplied with hinge pins facing one another. Before fitting, offer panel to hinge side wall, reverse the top hinge & fit bottom channel



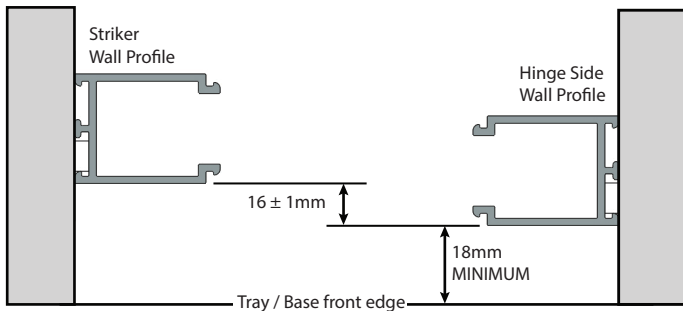
Undo / remove the 4 clamp screws indicated, flip the hinge bracket over, fit & re-tighten the clamp screws. (On completion both hinge pins will be upright).

Apply a continuous bead of clear silicone to the inside of the bottom channel then carefully push upto the vertical profile then onto the glass bottom edge. a mallet or hammer and wood block may be used. Take care not to bend trim!

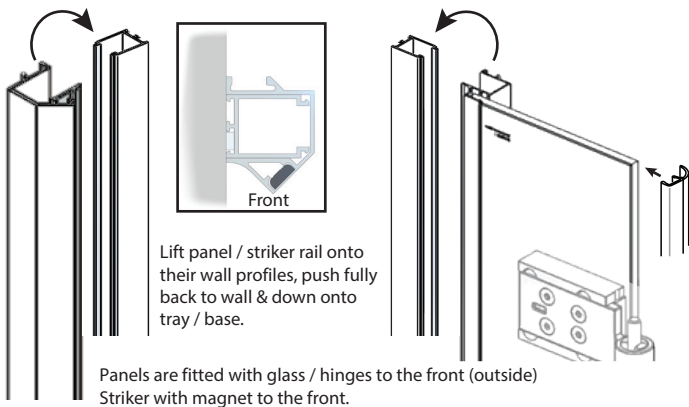
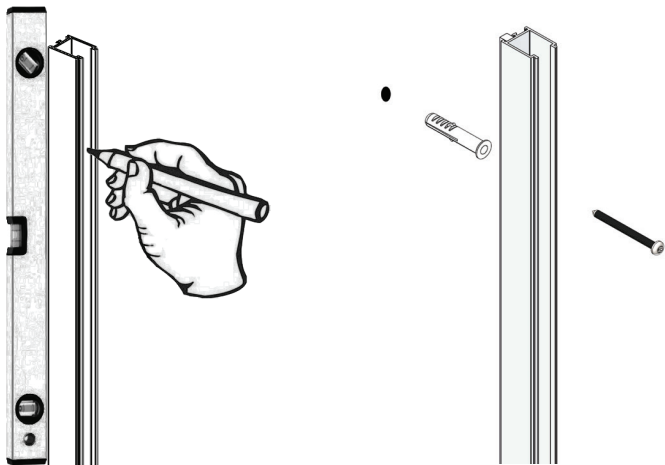


Wall Profile Positioning & Mounting :

To Ensure unit stands on tray correctly, wall profiles **MUST BE POSITIONED AS SPECIFIED**, with foam seal towards the front (outside) of the tray or base.



Measure, plumb wall profile & mark screw positions. Drill with 8mm bit, plug & fix all profiles using 4mm x 45mm screws.



Lift panel / striker rail onto their wall profiles, push fully back to wall & down onto tray / base.

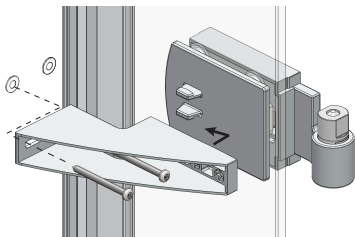
Panels are fitted with glass / hinges to the front (outside)
Striker with magnet to the front.

Align edge seal to top of glass & fit seal to edge of hinge panel (lip to inside)

Wall Brackets :

Engage bracket onto hinge backplate & push upto side wall.

Level and mark hole positions (centre of slots in bracket).

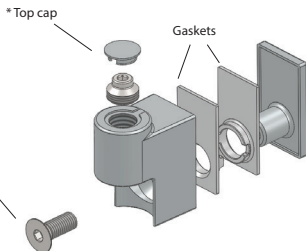


Remove bracket, drill & fit wall plugs. Re-fit bracket & ensuring panel is parallel to tray / base front edge, fix bracket to wall ONLY at this stage.

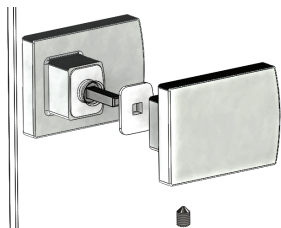
Door Setup : (RH door shown - reverse for LH)



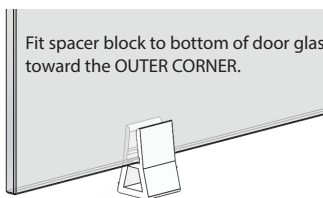
Ensure one gasket to each face of glass
* Do NOT top cap at this stage. Fully tighten clamp screws.



Fit square connecting bar into 1st handle, align M8 hole with dimple & fully tighten grubscrew then back off 1 turn. Fit gasket & pass square bar through glass. Fit 2nd gasket then 2nd handle, press handles together then fully tighten grubscrew in 2nd handle. Re-tighten 1st grubscrew to clamp.

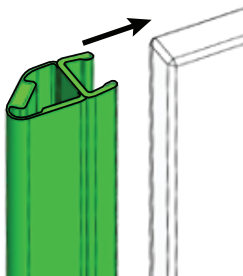
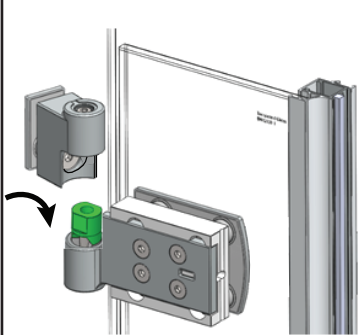


Fit spacer block to bottom of door glass toward the OUTER CORNER.



Door Fitting : 2 PERSONS REQUIRED.

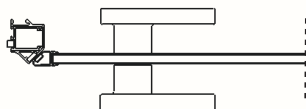
With door approx 60-90° open, carefully lift door, align both hinges & lower door onto hinge panel, push door towards the closed position until door drops & risers engage correctly. AFTER ASSEMBLY, DOOR WEIGHT MUST BE SUPPORTED AT ALL TIMES UNTIL HINGE PANEL IS SCREWED TO WALL PROFILE!



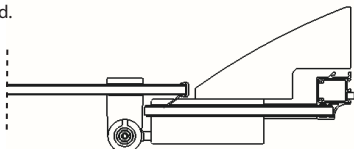
Magnetic seals :
Align seal end with top of glass. Press fit onto door edge.

Adjustment provided : Each wall profile = 15mm. Hinge = 15mm

With door on support block and in closed position, maneuver / adjust hinge panel & striker rail - then hinges - until magnets meet & hold.



15mm

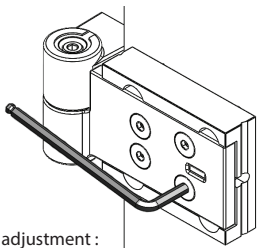


15mm



15mm

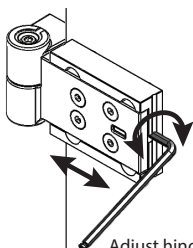




Hinge adjustment :

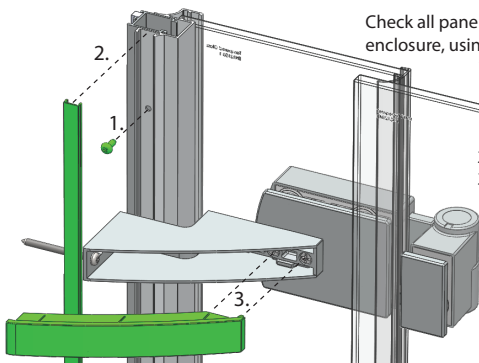
Loosen 4 clamp screws ONE TURN ONLY.

NEVER REMOVE THESE SCREWS WITH DOOR FITTED!



Adjust hinges as necessary
then re-tighten clamp screws

Check all panels are plumb then from inside enclosure, using wall profile holes as a guide.



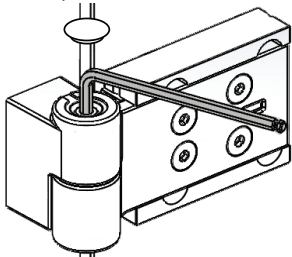
1. Drill dia. 3mm holes, affix panel and striker to wall profiles with 3.5mm x 8mm screws.

2. Fit screw cover sections.

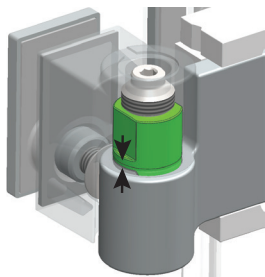
3. Align hinge panel parallel to front of tray / base.

After adjustment tighten all bracket grub screws and fit bracket cover.

Support block may now be removed . Open / close door & re-adjust hinges to fine tune the door magnets. Visually check both hinges for riser clearance, if one shows clearance, turn it's take up screw until castellated faces of white plastic risers are in full contact when door is in closed position.

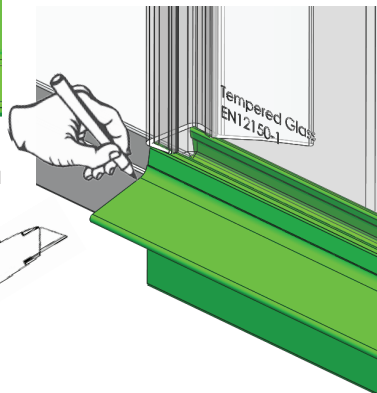
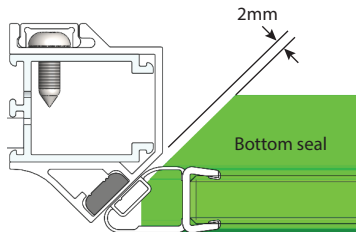


After adjusting 'take up' fit top caps to door hinges



Bottom Seal & Threshold :

As supplied, the bottom seal is over length & requires cutting. With drip lip to inside, offer the seal 2mm from the striker rail (45° faces 2mm apart)



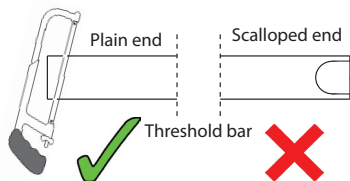
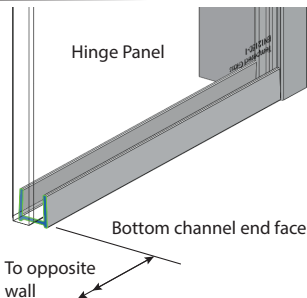
At the hinge side of door glass, mark the seal flush to the glass edge, remove seal & neatly cut to length.

Re-position & press fit seal fully onto door bottom edge.

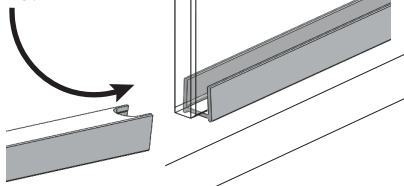


Measure distance from end face of the hinge panel bottom channel to the opposite wall. Neatly, square cut the threshold bar to measurement -1mm.

N.B. Cut ONLY at the plain end of the threshold bar!



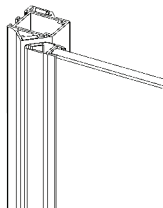
Insert scalloped end of bar under glass corner, down to tray/base & up to bottom channel.



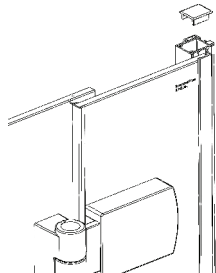
Select & fit profile caps.



Striker rail side

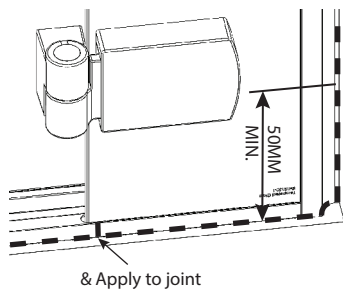
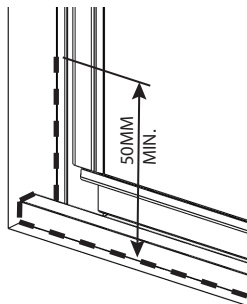


Hinge panel side



Silicone Sealing :

It is recommended to clean all surfaces before siliconing. With all threshold items in place, aligned as necessary, & with door closed, apply continuous bead of clear silicone sealant as shown.



BASIC TROUBLESHOOTING :

Leakage :

The sealing method described in these instructions relies on a continuous seal being applied between shower walls & tray before installing the enclosure it ensures a watertight seal around the perimeter of the enclosure to the shower walls & tray.

In the unlikely event of an enclosure leak, water will be visible on the outside of the enclosure itself, or around the perimeter silicone seal ONLY. Water / moisture appearing outside this area (ie at floor level) is normally due to incorrect tray installation.

Door bottom seal catching harshly on threshold trim, or not settling inside threshold trim on closing : check & adjust door hinges to raise door outer corner.

Magnetic seals not meeting precisely / not holding : check & adjust door hinges. If hinge adjustment insufficient, striker or inline / side panel wall profile may require re-positioning.

Lakes Bathrooms Ltd.

Alexandra Way

Ashchurch

Tewkesbury

Gloucestershire

GL20 8NB

Service England, Scotland, Wales

8.30am—5pm Mon ~ Thurs

8.30am—4.30pm Fri

Tel / HELPLINE : 01684 853870

Fax : 01684 857411

www.lakesbathrooms.co.uk

Email : admin@lakesbathrooms.co.uk

Service : Northern Ireland

Ian A Kernohan

Firtrees

Green Way Industrial Estate

Conlig

Northern Ireland

BT23 7SU

8.30am—5pm Mon ~ Thurs

8.30am—4.30pm Fri

Tel : 02891 270233

Fax : 02891 270597

Email : info@iakonline.com