

# Island Sliding Door

Installation & Maintenance Instructions



## IMPORTANT NOTES :

Please read carefully & retain these instructions for future reference.

1. For ease & safety we advise that two persons assemble this product.
2. Protect shower tray surface at all times.
3. Exposed glass corners/edges MUST NOT contact hard surfaces at any time.
4. Check for cables, pipes etc. before drilling walls.
5. Ensure all surfaces are dry, clean & free from loose debris or dust.
6. Unpack goods with care (small parts can become lodged in packaging and inadvertently discarded)  
Check parts supplied against parts and fittings listed herein.  
Damaged parts / omissions may be resolved by calling Lakes helpline.
7. Whilst precautions are taken in manufacture, care must be taken when handling as rail ends may have sharp edges.
8. Before commencing, check that :
  - a) shower tray (if used) is level & completely sealed to finished / tiled walls.
  - b) finished walls are sound and free of cracks, loose tiles / grout.
9. AFTER INSTALLATION DO NOT WET ENCLOSURE FOR 48 HOURS TO ENSURE FULL CURE OF SILICONE SEALANT.

## Use :

### General Care & Maintenance.

Provided this product is installed and operated in accordance with these instructions problems should not arise however should maintenance be required it should be carried out by a competent person with reference to these instructions. Before any work is carried out, the root cause of the problem must be identified. Lakes service engineers are available if necessary to consult / carry out remedial work. Call Lakes helpline.

Cleaning. (Every one to two weeks depending on local water (hardness) conditions)

All glass panels in this product have a hydrophobic coating which aids "runoff" of water droplets, reducing the need for frequent cleaning however for best appearance & product life regular cleaning is recommended.

Use ONLY mild soap / detergent solutions to clean, rinse with water, squeegee glass panels and wipe frames dry with a soft cloth. Under no circumstances should abrasive, caustic or scouring products be used. Non-compliance with these cleaning instructions may cause decorative finishes to deteriorate & could adversely affect safe operation of the enclosure.

### Daily Care.

To prevent the build up of limescale, do not allow water droplets to dry on glass or frames. After showering, rinse with water, remove droplets of water from glass with a squeegee & wipe frame with a soft cloth.

### Customer Service.

Quality guarantee : Lakes Bathrooms Ltd. guarantee shower doors and enclosures against any manufacturing or material defects for the lifetime of the product. We will resolve defects free of charge by repairing / replacing parts as we feel necessary. To be free of charge, service work must be carried out by Lakes Bathrooms or approved agents. Seals are considered "wear & tear" parts and as such are guaranteed for 12 months from purchase.

Not covered by this guarantee : Damage or defects that result from improper installation, improper use or lack of maintenance (including limescale buildup). Damage or defects that result from repairs / modifications undertaken by unauthorised persons. This guarantee is in addition to statutory and other legal rights.

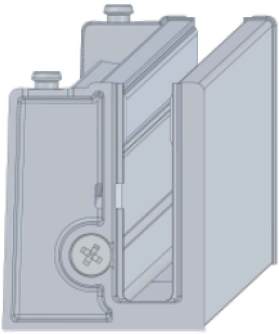
What to do if anything goes wrong : Should the product not function correctly on initial use, firstly contact the installer to check that unit installation & commissioning are in accordance with these instructions. Should this not resolve difficulties or should performance decline, consult 'Troubleshooting' section of these instructions to see if simple home maintenance is needed. alternatively our helpline staff can assist or arrange for a service engineer to visit if necessary.

Spares : We maintain an extensive spare parts stocks. spares can be ordered / purchased from your retailer in the first instance. Parts will normally be despatched within two working days from placement of order.

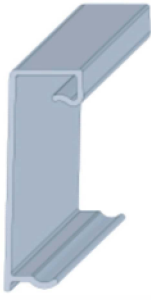
Parts List:



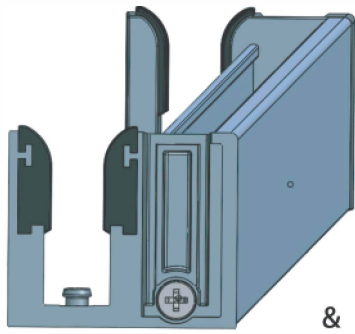
Threshold Bar Assembly



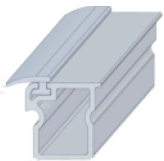
Fixed Panel Wall Assembly



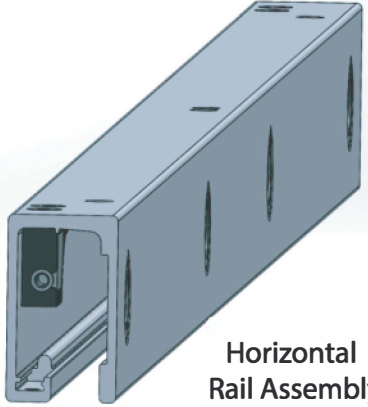
& FP Wall Cover profile



Door Side Wall Assembly



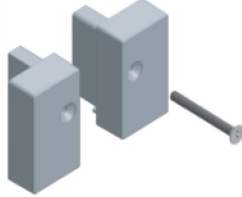
Door Side Wall closure profile & seal



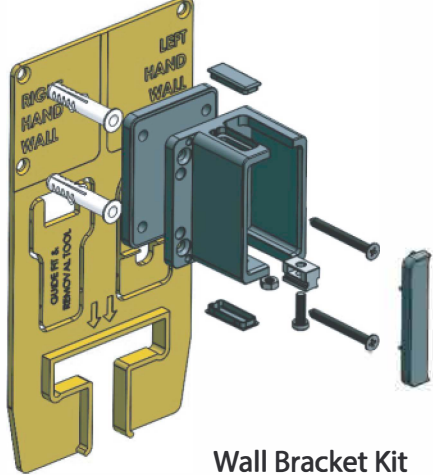
Horizontal Rail Assembly



Spigot Kit (FP side) x2



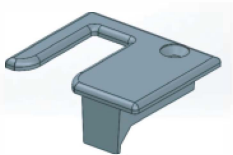
End Cap Kit (horiz rail)



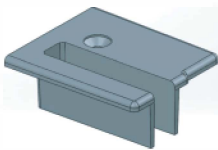
Wall Bracket Kit



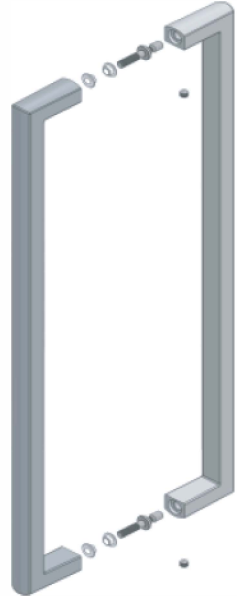
Wheel Kit x2



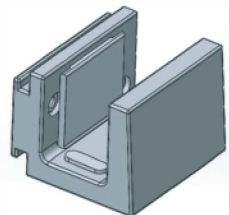
Top Cap (door side WP) handed pair



Top Cap (FP side WP) handed pair



Handle Kit



Guide kit



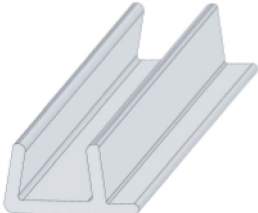
Door Glass



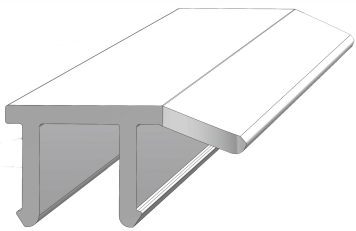
Fixed Panel Glass



Door Stop Buffer  
5mm x4  
10mm x4  
15mm x4



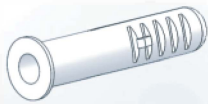
Edge Seal x2



Threshold Capping

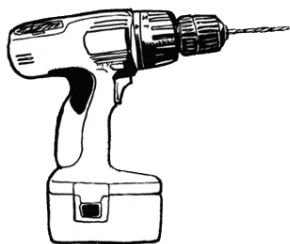


4mm x 40mm lg CSK pozidriv screw & CSK plastic washer x6



Wall Plug x6

# Tools Required:-



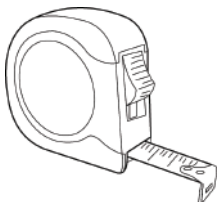
Power drill & 8mm masonry bit



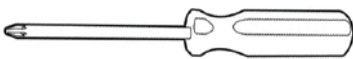
Pencil



Spirit level with vertical bubble



Tape measure



Pozidriv screwdriver



Good quality silicone sealant and applicator

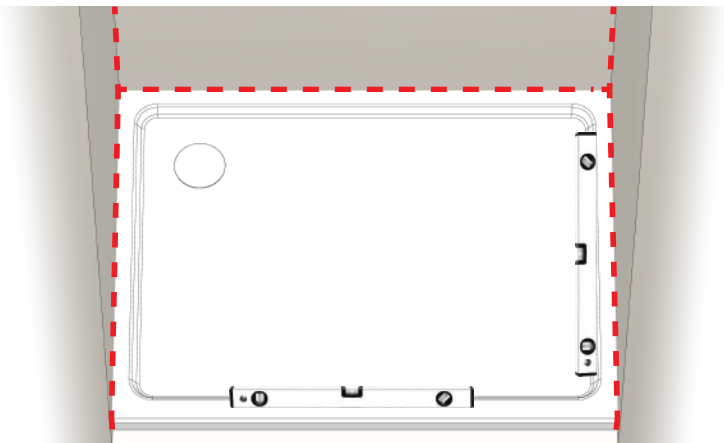


Junior hacksaw



Allen keys (2.5, 3, & 5mm)

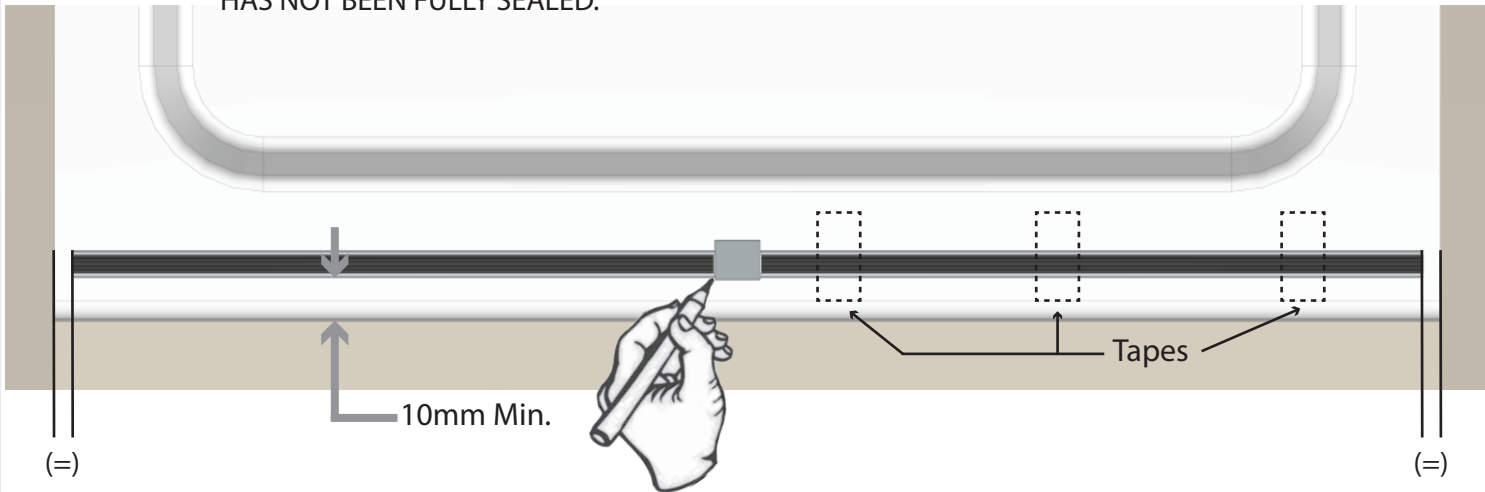
## Setting Out.



Size Ref.	Adjustment Range (mm)
1000mm	955 - 1000
1100mm	1055 - 1100
1200mm	1155 - 1200
1300mm	1255 - 1300
1400mm	1355 - 1400
1500mm	1455 - 1500
1600mm	1555 - 1600
1700mm	1655 - 1700
1800mm	1755 - 1800
1900mm	1855 - 1900
2000mm	1955 - 2000

Ensure tray is completely level and all tray / wall edges are completely sealed prior to installation.

DO NOT BEGIN INSTALLATION ON A TRAY WHICH HAS NOT BEEN FULLY SEALED.



Place threshold parallel to front edge of the tray.  
Ensure the gaps between threshold ends and wall is equal at both ends, hold threshold bar in place with masking tape to DOOR side. Lightly mark tray at the edges of the central block with a pencil as a reference if threshold shifts during installation.

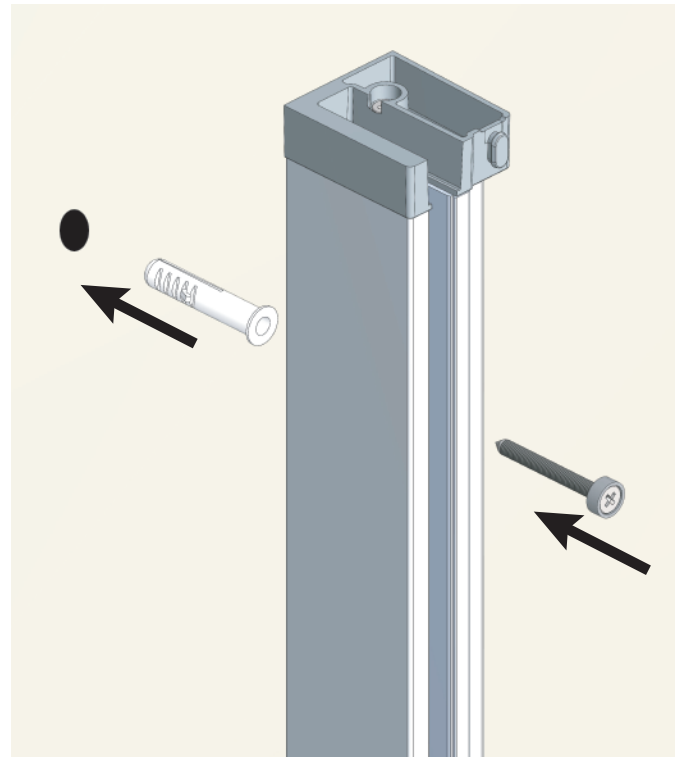


Place fixed panel wall profile over threshold bar.  
Ensure profile is plumb, mark centre of slots in 3 places.

Drill marked positions with 8mm drill bit then fit wall plugs.

Fix wall profile to wall using M4 x 40mm Screw and washers.

Repeat process for door closing side wall profile

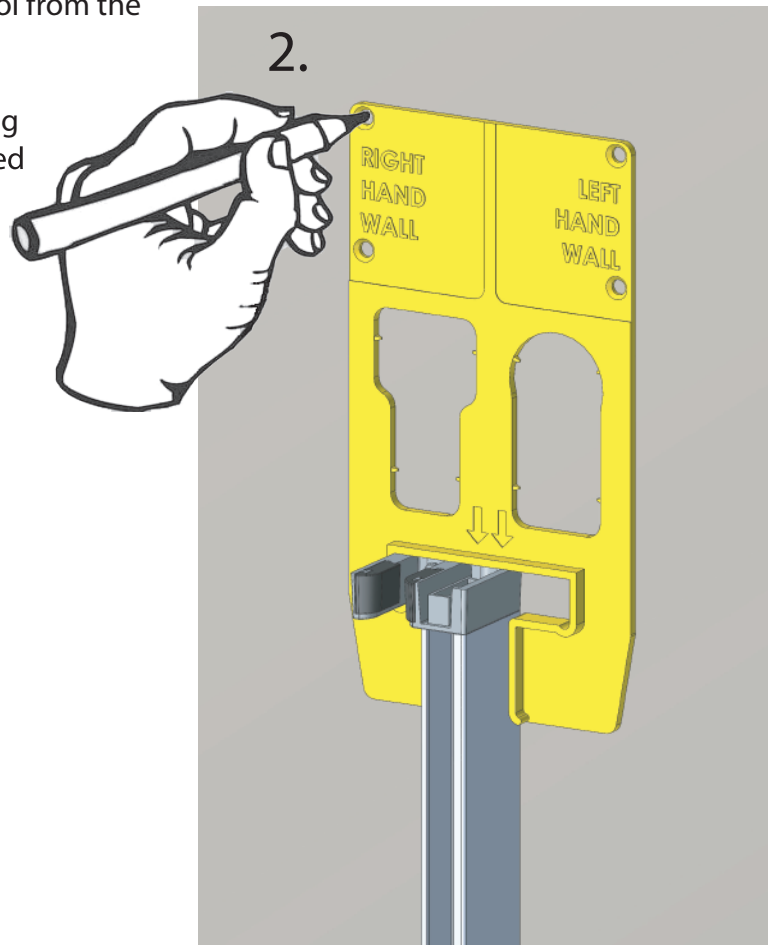
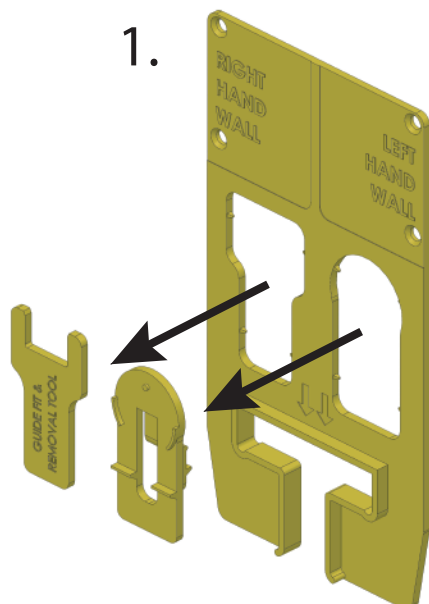


## Wall Template:

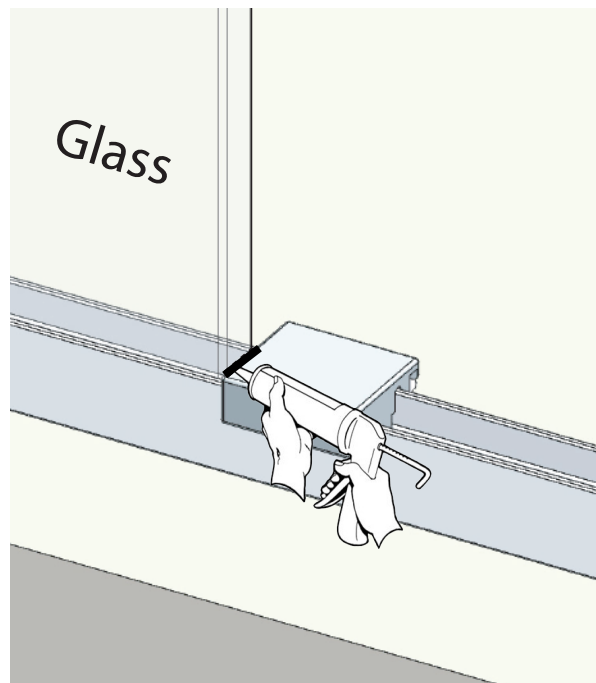
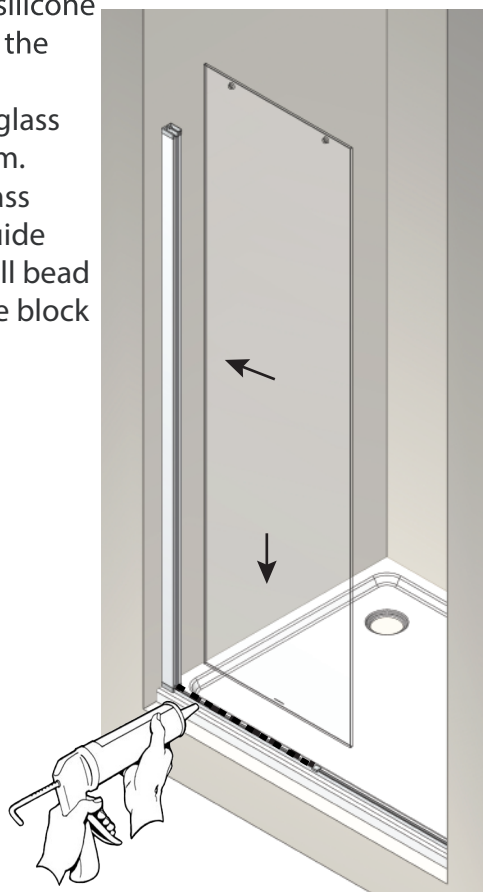
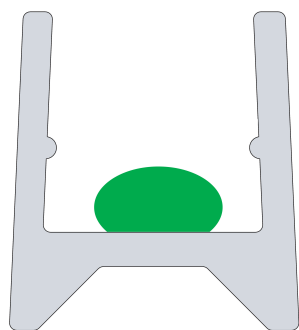
1. Carefully remove Guide Tool & Spigot Fitment Tool from the wall bracket template and retain for future use.

2. Place wall bracket template on top of door closing profile, mark wall bracket screw positions for selected handing.

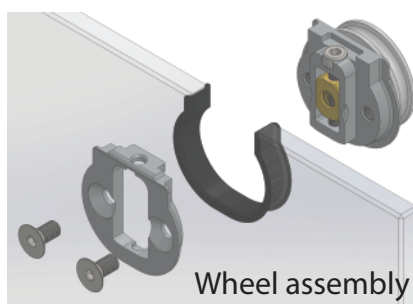
Drill marked positions with 8mm drill bit and fit wall plugs.



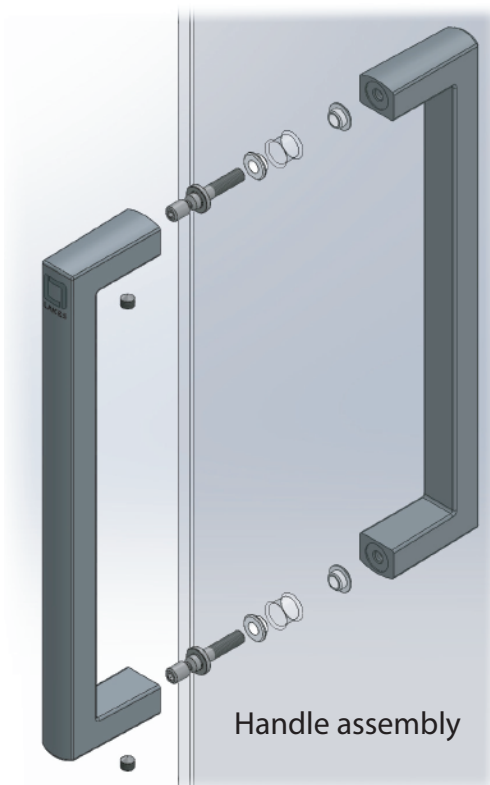
Apply a continuous bead of silicone along the fixed panel side of the threshold trim then with the countersinks to front, lower glass into channel of threshold trim. The bottom corner of the glass should be adjacent to the guide block as shown. Apply a small bead of silicone to the glass /guide block joint.



Assemble door to suit desired hand.



Wheel to be assembled facing towards wet side of door glass!



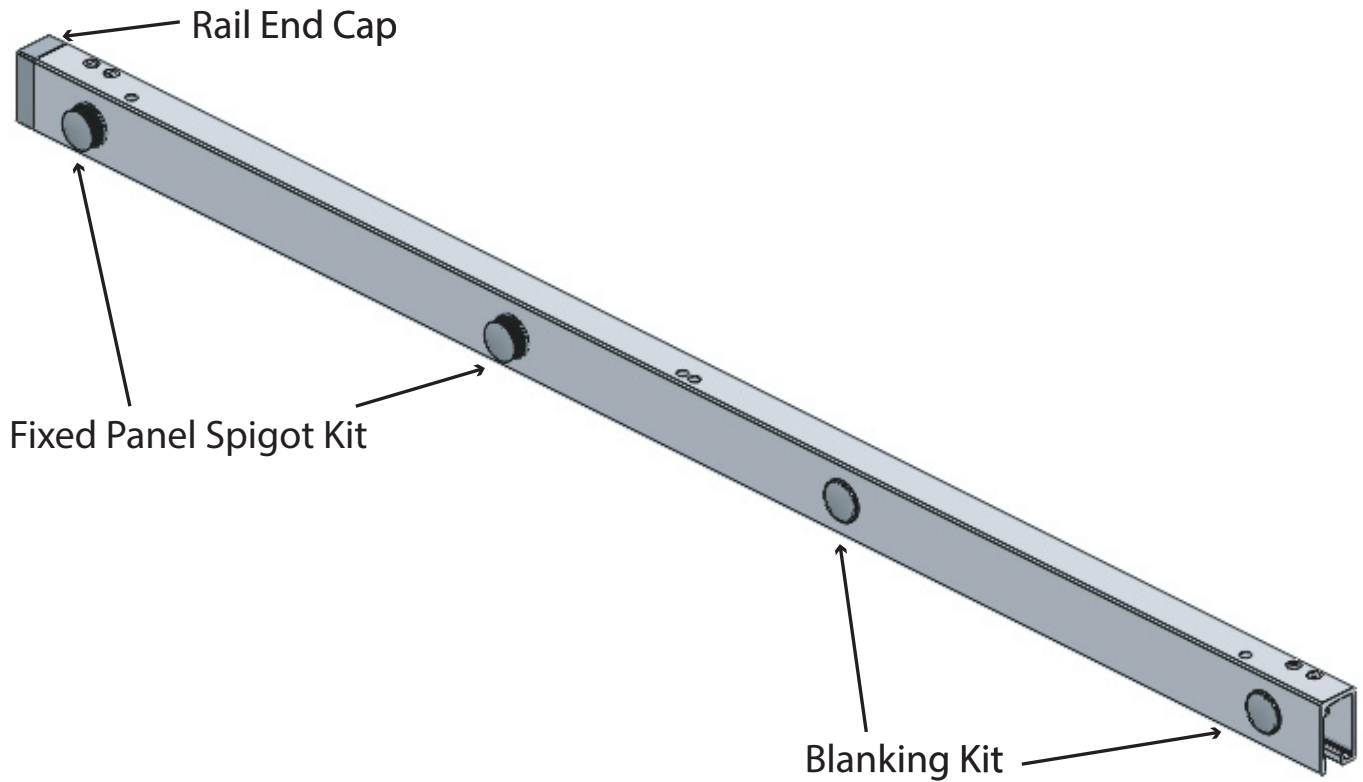
Door assembly for  
LEFT HAND enclosure.

Door assembly for  
RIGHT HAND enclosure.

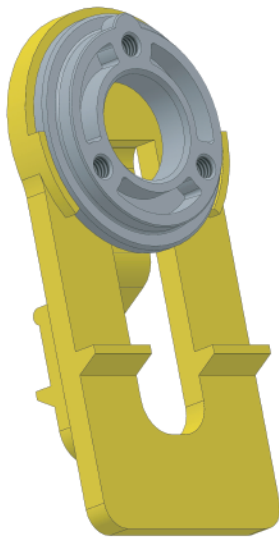


# Assemble horizontal rail to suit desired hand.

Horizontal rail set up  
for RIGHT HAND door.  
(Reverse for left hand door)



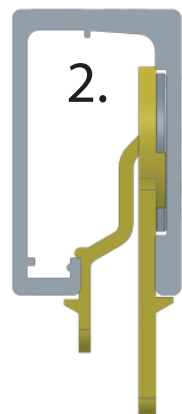
1.



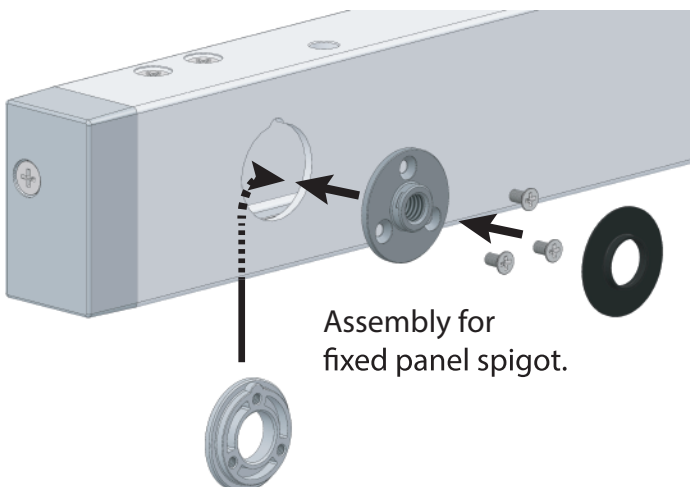
Use boss fitment tool to hold the bosses in place during assembly.

1. Place boss onto fitment tool with the alignment key towards the top

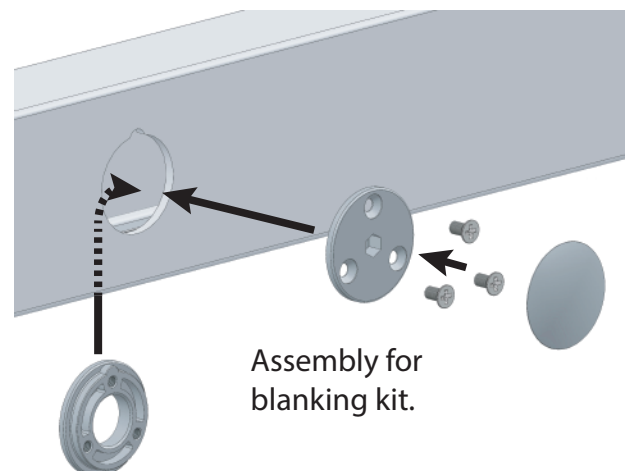
2. Clip the tool into the rail so that the boss is retained in the hole in the rail.



2.



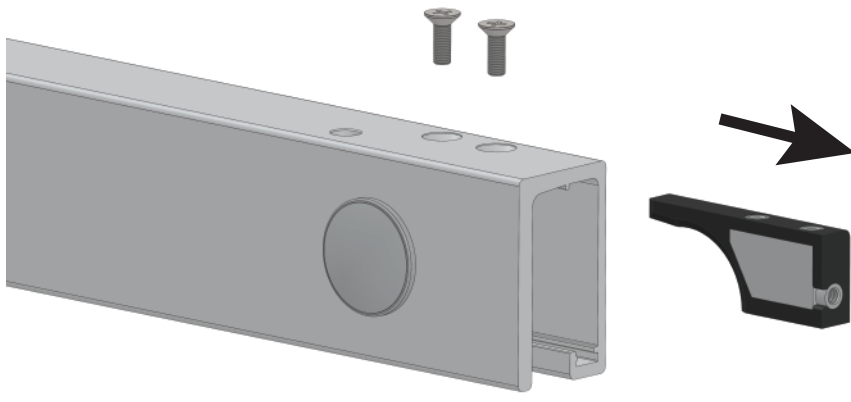
Assembly for  
fixed panel spigot.



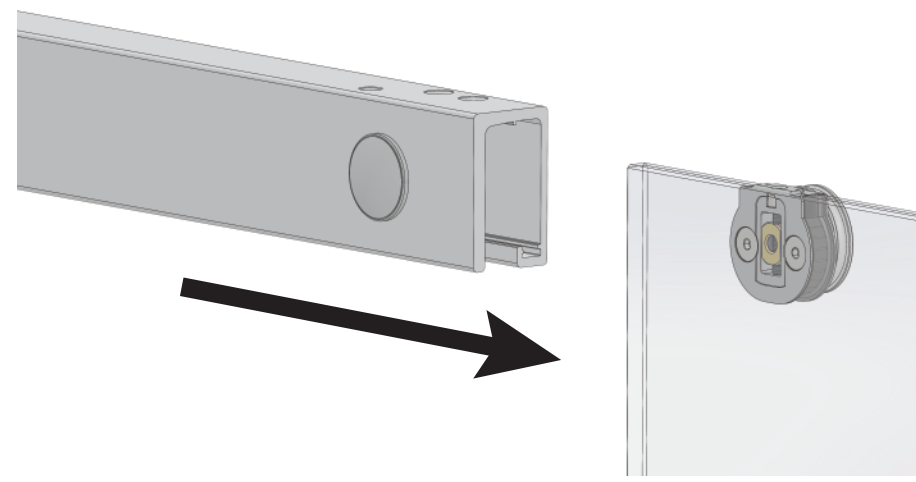
Assembly for  
blanking kit.



Fix rail end cap with M4 x 40 screw



Remove 2x screws from top of open end of horizontal rail and take out doorstop.

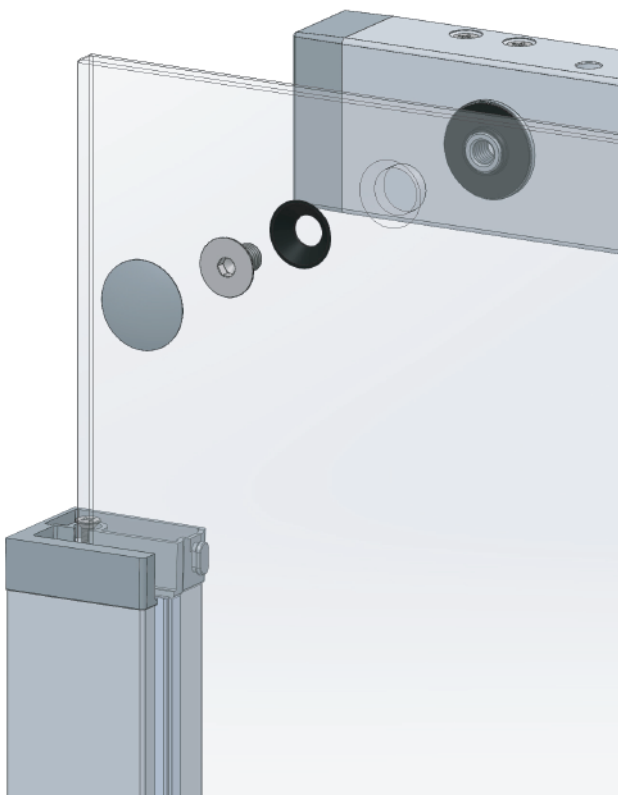


Slide horizontal rail onto assembled door ensuring wheel runs on track then replace doorstop and fix with the 2x screws.

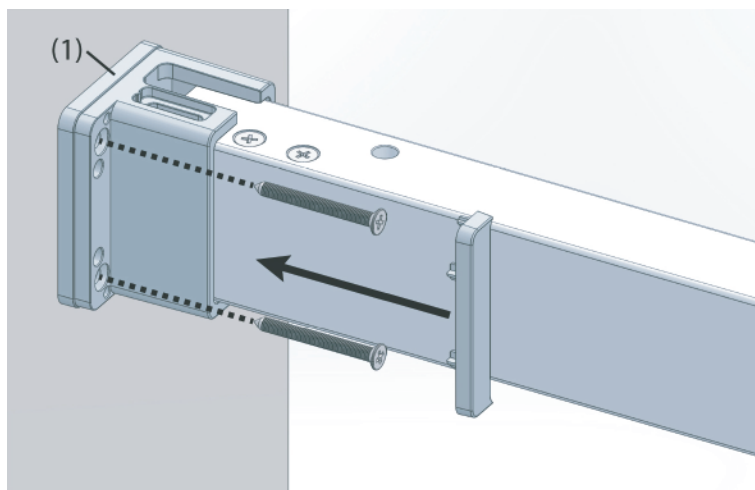
Loosley fix wall bracket to rail end.

1. Ensuring nut is in place, insert locking block into track groove.
2. Place bracket onto rail end.
3. fix bracket to rail using M4 x 13 low head socket head cap screw.  
Do not fully tighten at this stage.



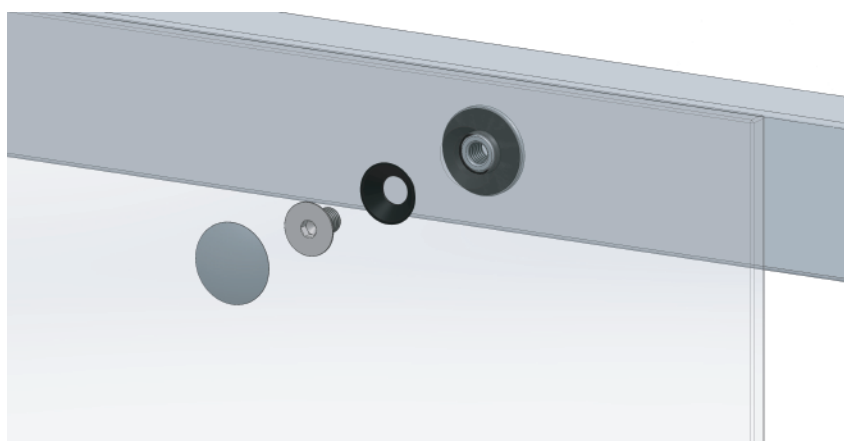


Fix rail to fixed panel glass using remaining parts of spigot kit. At this stage, fix spigot closest to wall only.

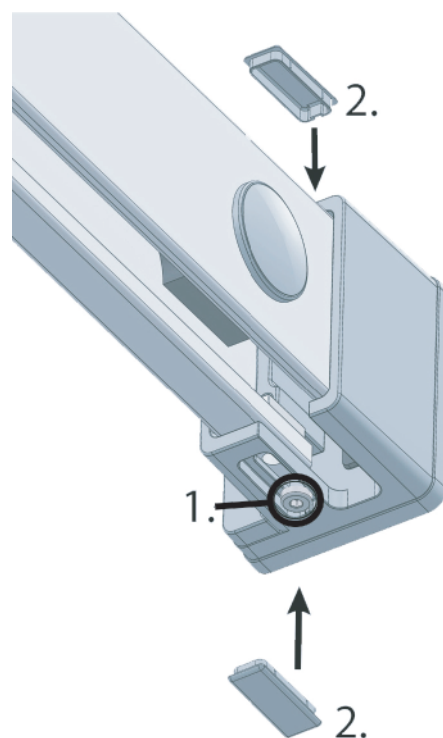


Fix Wall bracket to wall using 2x MX x 40mm screws through previously drilled and plugged holes then push fit cover.

Use spacer (1) unless installing at minimum adjustment.

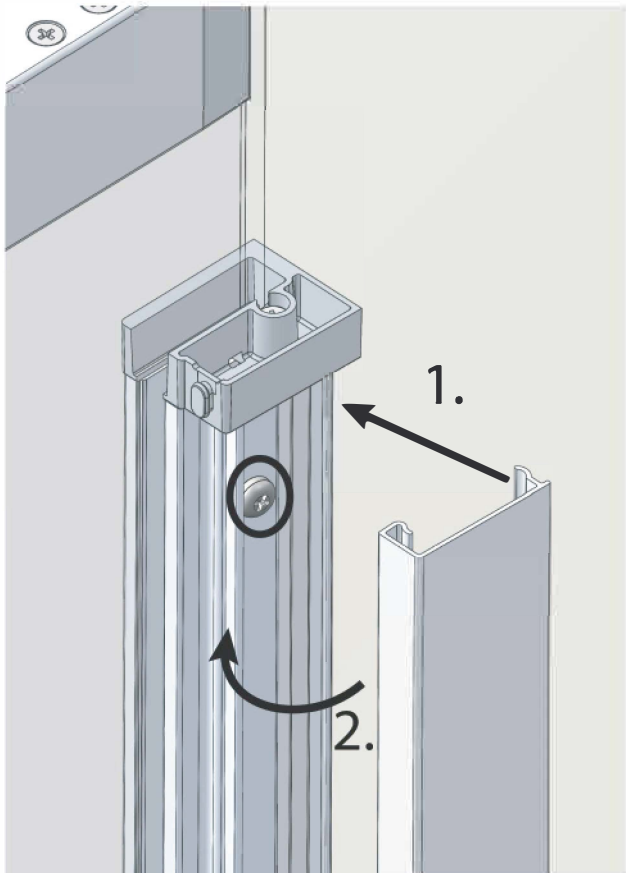


Finalise fixing of horizontal rail to fixed panel glass by fitting second spigot kit parts.



1. Tighten locking screw in bottom of bracket

2. Fit cover caps top and bottom.



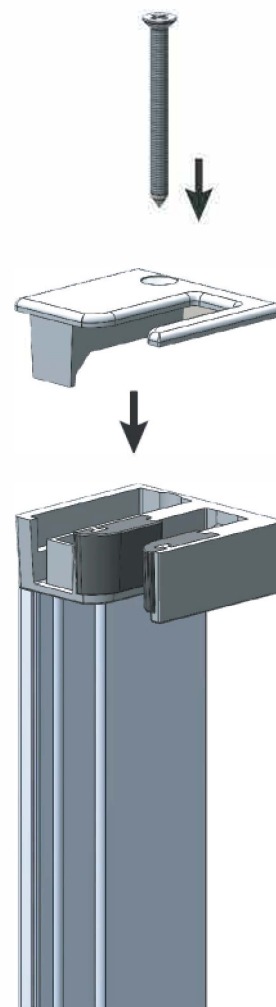
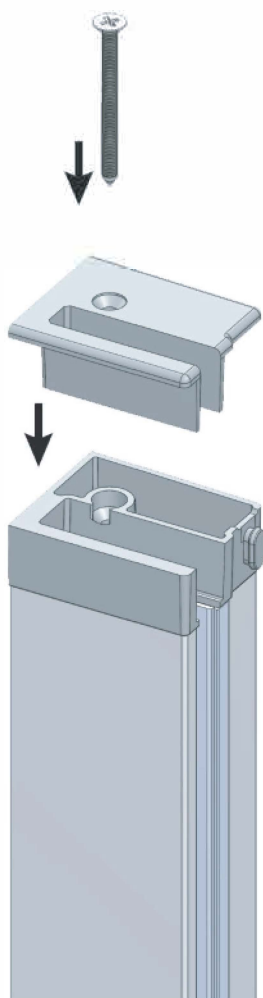
Tighten the clamping screws on the wall profile.  
There are 6 clamping screws and all must be tightened to prevent glass movement in operation.

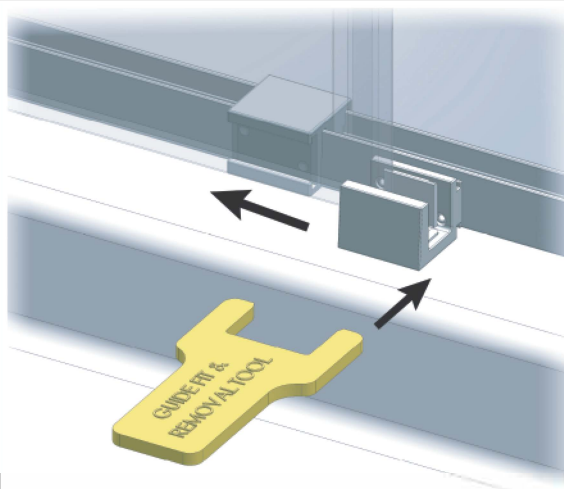
Fit profile cover strip onto wall profile.

1. Hook wall profile cover onto wall profile on the wall side
2. Push the profile cover into position.

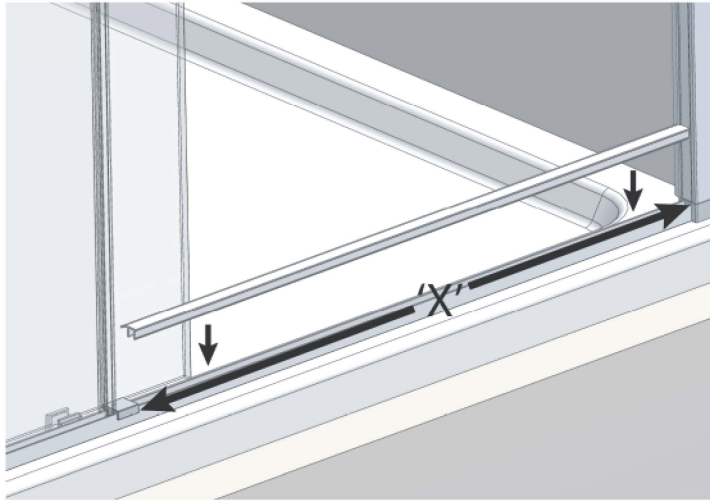
Fit wall profile top caps.

Remove screw in top of end trim, fit cap and re-use screw to fix.





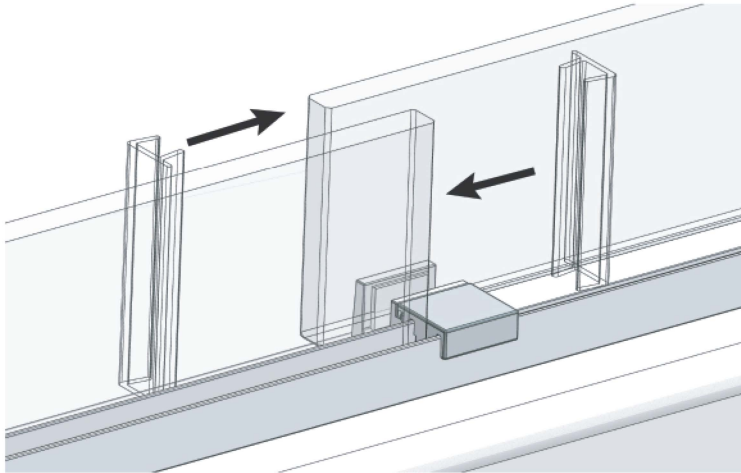
Slide guide assembly under bottom of door glass then into 'T' slot in guide block on threshold trim.



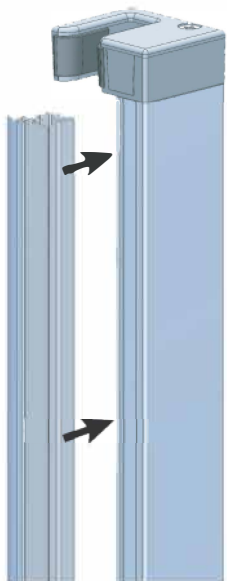
Fit threshold capping trim.

Measure dimension 'X' (from the edge of the guide block to the wall profile) and cut the threshold trim to length with a junior hacksaw.

With the lip facing into the enclosure and curved end adjacent to the wall profile, clip trim into threshold bar.

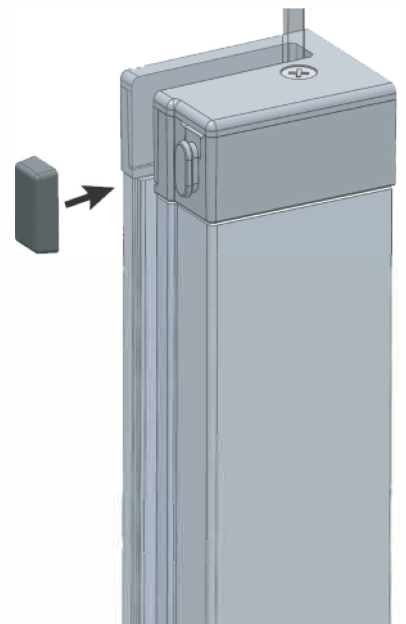


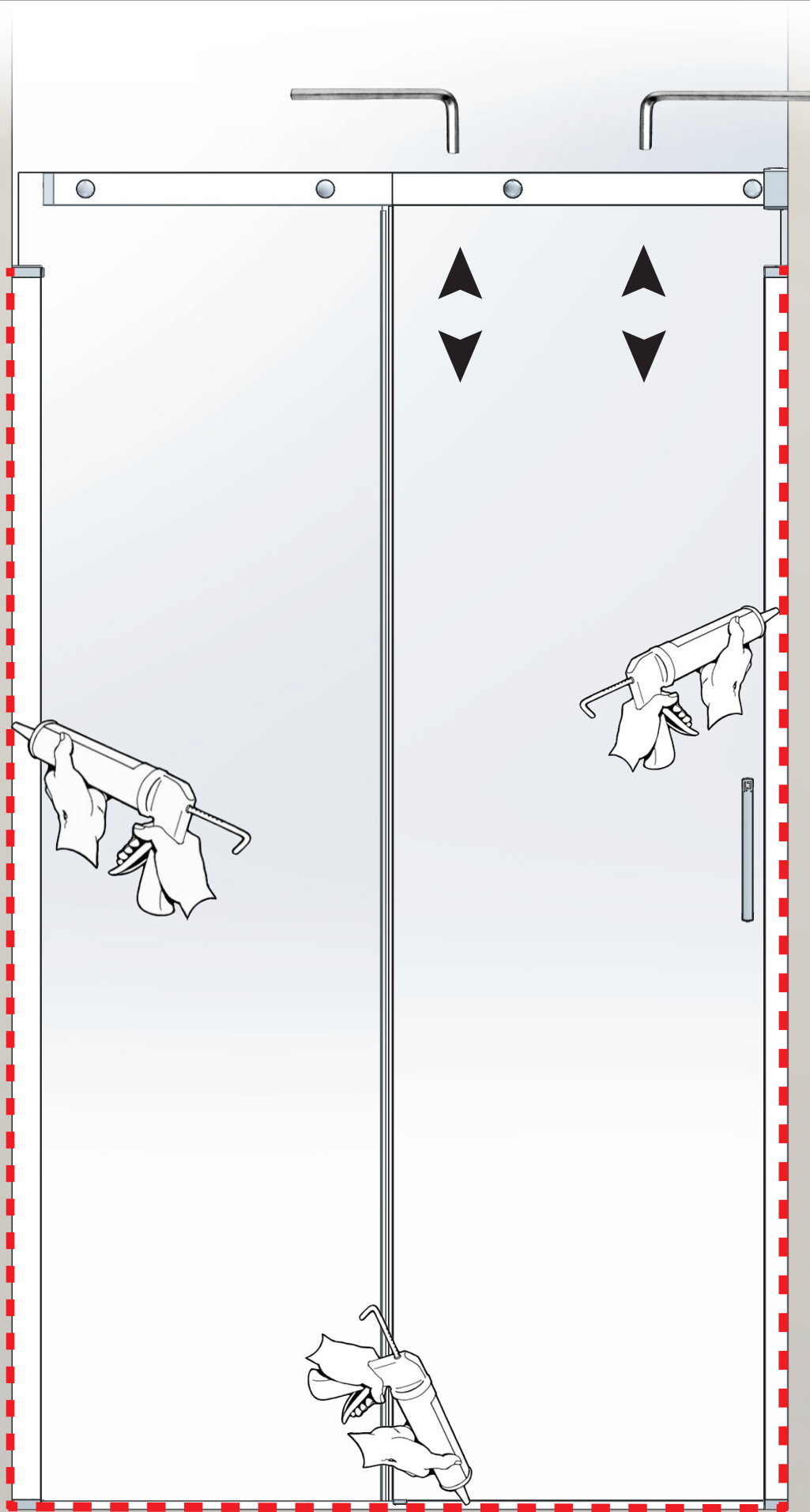
Fit edge seals to fixed panel glass and door glass. Seals may be wetted to ease fitment.



With seal edge oriented towards inside of enclosure, push closing seal assembly into closing side wall profile.

Push buffers onto wall profiles in 4 places (one each at top and bottom of each profile)  
With door in open and closed positions, select largest buffer that will fit.





Adjust door so that bottom edge of glass runs as close as possible to guide without interference. Use 3mm allen key through holes in top of horizontal rail to raise or lower the door. Door may need to be moved slightly left or right to align hole and adjusting screw on wheel.

Apply a continuous bead of clear silicone sealant as shown EXTERNALLY ONLY.

## Basic Troubleshooting :

Door motion noisy / Door not running smoothly.

Check edge seals not dragging on glass or fouling any other part of the enclosure

Check wheels engaged correctly on track and roll smoothly

Check door glass adjusted correctly (not dragging on guide)

## Leakage:

The sealing method described in these instructions relies on a continuous seal being applied between walls & tray before installing the enclosure, it ensures a watertight seal around the perimeter of the enclosure to the shower walls & tray.

In the unlikely event of an enclosure leak water will be visible on the outside of the enclosure itself or around the perimeter joints only. Water appearing outside of the enclosure i.e. at floor level is normally due to incorrect tray installation.

Lakes Bathrooms Ltd.  
Alexandra Way  
Ashchurch  
Tewkesbury  
Gloucestershire  
GL20 8NB

Service - England, Scotland, Wales.

08:30 - 17:00 Mon to Thurs

08:30 - 16:30 Fri

Tel:- 01684 853870

Email:- [admin@lakesshoweringspaces.com](mailto:admin@lakesshoweringspaces.com)

[www.lakesshoweringspaces.com](http://www.lakesshoweringspaces.com)