

# Wave Series Sliding Door

## Installation & Maintenance Instructions

Rev. 10.21



## **IMPORTANT NOTES :**

Please read carefully & retain these instructions for future reference.

1. For ease & safety we advise that two persons assemble this product.
2. Protect shower tray surfaces at all times.
3. Exposed glass corners / edges **MUST NOT** contact hard surfaces at any time.
4. Check for cables, pipes etc before drilling walls.
5. Ensure all surfaces are dry, clean & free of loose debris / dust.
6. Unpack goods with care (small parts can become lodged in packaging & inadvertently discarded). Check parts supplied against parts & fittings listed herein. Damaged parts / omissions may be resolved by calling Lakes Bathrooms Helpline.
7. Whilst precautions are taken in manufacture, care must be taken when handling as rail ends may have sharp edges.
8. Before commencing, check :
  - a) shower tray is level & completely sealed to finished / tiled walls.
  - b) finished walls are sound & free of cracks loose tiles / grout.
9. **AFTER INSTALLATION, DO NOT 'WET' ENCLOSURE FOR 48 HOURS (ENSURE FULL CURE OF SILICONE SEALANT).**

## **USE :**

### **General Care & Maintenance.**

Provided this product is installed & operated in accordance with these instructions, problems should not arise. However should maintenance be required it should be carried out by a competent person with reference to these instructions. Before any work is carried out the root cause of the problem must be identified. Lakes Bathrooms service engineers are available if necessary to consult / carry out remedial work. Call Lakes Bathrooms HELPLINE.

### **Cleaning.**

(Every one to two weeks depending on local water {hardness} conditions).

All glass panels in this product have a hydrophobic coating aiding 'runoff' of water droplets, reducing the need for frequent cleaning. For best appearance / product life however, regular cleaning is recommended.

Use **ONLY** mild soap / detergent solutions to clean. Rinse with water, squeegee glass panels & wipe frames dry with a soft cloth. Under no circumstances should abrasive, caustic or scouring products be used. Non compliance with these cleaning instructions may cause decorative finishes to deteriorate & could adversely affect safe operation of the enclosure.

Limescale ~ should a build up of limescale occur, remove using a 50:50 solution of white vinegar & water applied with a soft cloth & rinsed / dried thoroughly afterwards.

### **Daily Care.**

To prevent the build up of limescale, do not allow water droplets to dry on glass or frames. After showering, rinse with water, remove droplets from glass with a squeegee & wipe frame with a soft cloth.

### **Customer Service.**

Quality Guarantee : Lakes Bathrooms Ltd guarantee Shower Doors & Enclosures against any manufacturing or material defects for the lifetime of the product. We will resolve defects free of charge by repairing / replacing parts as we feel necessary. To be 'free of charge' service work must be carried out by Lakes Bathrooms or approved agents.

Seals are considered 'wear & tear' parts, as such, they are guaranteed for 12 months from purchase.

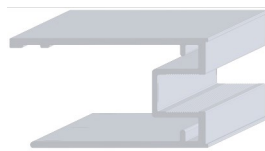
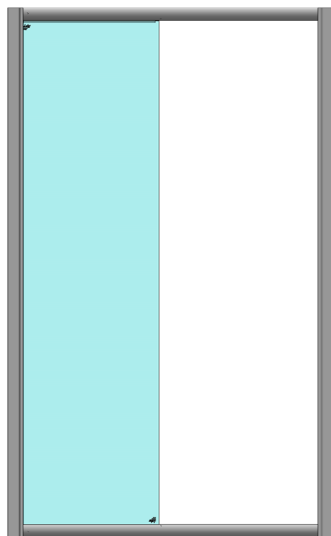
Not Covered by this Guarantee : Damage or defects that result from improper installation, improper use, or lack of maintenance (including limescale buildup). Damage or defects that result from repairs / modifications undertaken by unauthorized persons. This guarantee is in addition to statutory & other legal rights.

**What to do if something goes wrong :** Should the product not function correctly on initial use, firstly, contact the installer to check that unit installation & commissioning are in accordance with these instructions. Should this not resolve difficulties or should performance decline, consult 'Troubleshooting' section to see if simple home maintenance is needed. Alternatively our HELPLINE staff can assist, or if necessary arrange for a service engineer to visit.

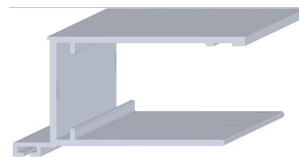
Spares : We maintain extensive spare part stocks. Spares can be ordered / purchased from your retailer in the first instance. Parts will normally be dispatched within two working days from order placement.

## SUPPLIED PARTS : 1000 to 1200mm

Main Panel Sub Assy 1x  
(comprising):



Vertical Frame Rail (panel side)  
(1950mm 1x)



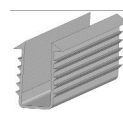
Vertical Frame Rail (door side)  
(1950mm 1x)



Horizontal Frame Rail Assy  
(handed pair)



4 x 40 long self tapping screw  
(8x)



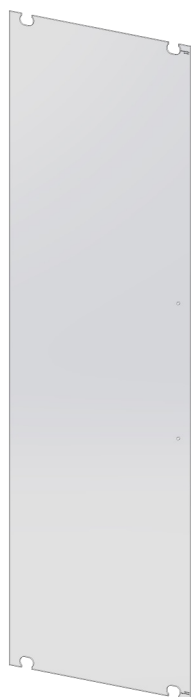
Vertical Glazing Seal  
(1x)



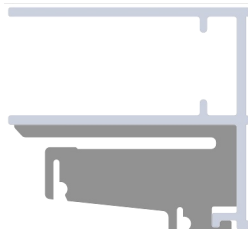
Horizontal Glazing Seal (2x)



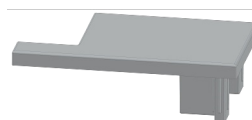
Screw Guide (2x)



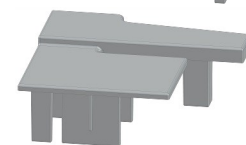
Door Glass (1x)



Wall Rail Assy  
1950mm (2x)



Top Cap inner  
(Vertical rail)  
(handed pair)



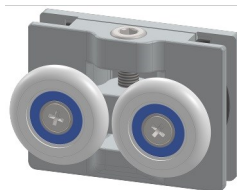
Top Cap outer  
(Vertical rail)  
(handed pair)



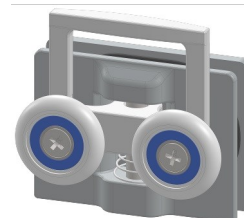
Frame Lip Seal (1x)



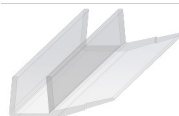
Handle  
Kit (1x)



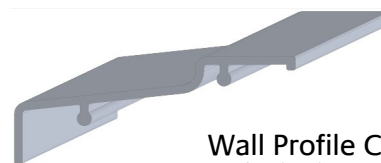
Top Wheel Assy  
(2x)



Bottom Wheel  
Assy (2x)



Edge Seals  
1937mm  
1850mm



Wall Profile Cover  
Strip (2x)



Doorstop  
Block (4x)



Doorstop Buffer  
(2x Top & 2x  
Bottom)



3,5 x 12 long Csk Head self  
tapping screw (4x)



Decorative Screw  
Cover Cap (4x)



4 x 45 long self  
tapping screw  
(6x)



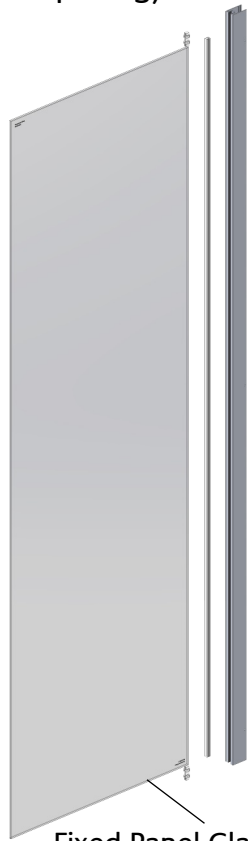
7,5 x 39mm  
Wall Plug (6x)



3,5 x 10 long Pan Head  
self tapping screw (6x)

## SUPPLIED PARTS : 1300 to 2000mm

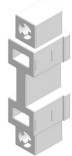
Fixed Panel Sub Assy 1x  
(comprising):



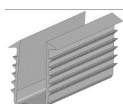
Fixed Panel Glass



Vertical Frame Rail (panel side) 1x



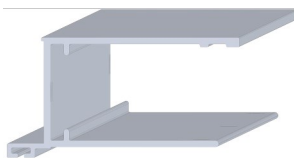
Screw Guide (2x)



Vertical Glazing Seal (1x)



4 x 40 long self tapping screw (4x)



Vertical Frame Rail (door side) (1950mm 1x)



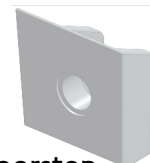
4 x 40 long self tapping screw (4x)



Horizontal Glazing Seal (2x)



Horizontal Frame Rail Assy (handed pair)



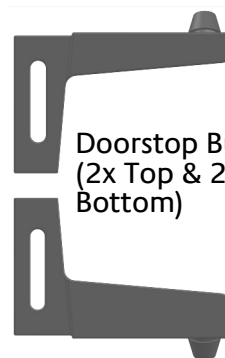
Doorstop Block (4x)



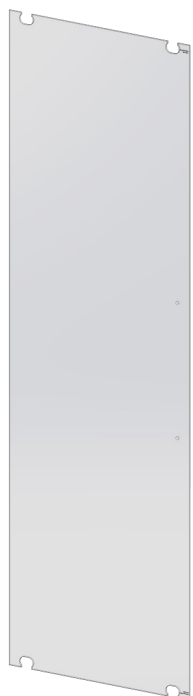
Decorative Screw Cover Cap (4x)



3,5 x 12 long Csk Head self tapping screw (4x)



Doorstop Buffer (2x Top & 2x Bottom)



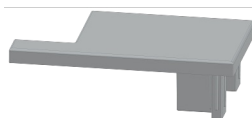
Door Glass (1x)



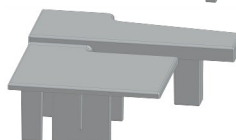
Wall Rail Assy (2x)



Handle Kit (1x)



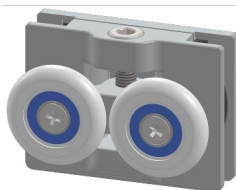
Top Cap inner (Vertical rail) (handed pair)



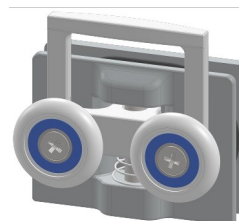
Top Cap outer (Vertical rail) (handed pair)



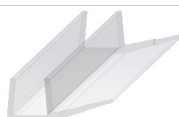
Lip Seal (1x)



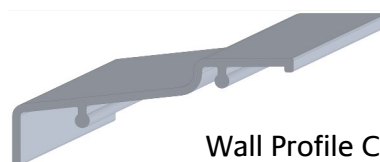
Top Wheel Assy (2x)



Bottom Wheel Assy (2x)



Edge Seals 1937mm 1850mm



Wall Profile Cover Strip (2x)



3,5 x 10 long Pan Head self tapping screw (6x)



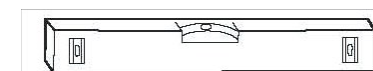
4 x 45 long self tapping screw (6x)



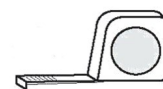
7,5 x 39mm Wall Plug (6x)

Size ref	Adjustment Range (Dim 'A')	Remark
1000mm	950 to 1000mm	Fully Assembled
1100mm	1050 to 1100mm	
1200mm	1150 to 1200mm	
1300mm	1250 to 1300mm	
1400mm	1350 to 1400mm	Kitted
1500mm	1450 to 1500mm	
1600mm	1550 to 1600mm	
1700mm	1650 to 1700mm	
1800mm	1750 to 1800mm	
2000mm	1950 to 2000mm	

## Tools Required



Spirit Level (with vertical 'bubble')



Tape Measure



4mm Allen Key



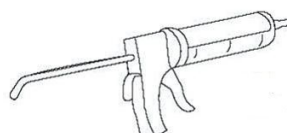
Power drill & 8mm masonry bit



Pencil



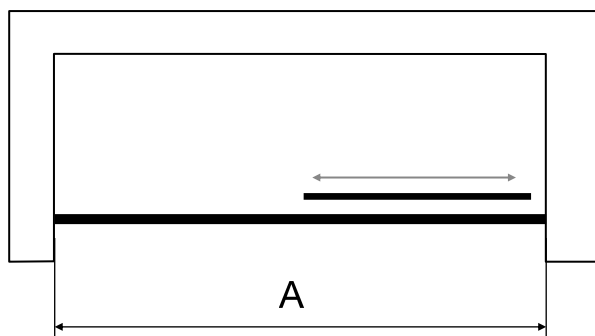
Pozi drive Screwdriver



Good quality silicone sealant & applicator

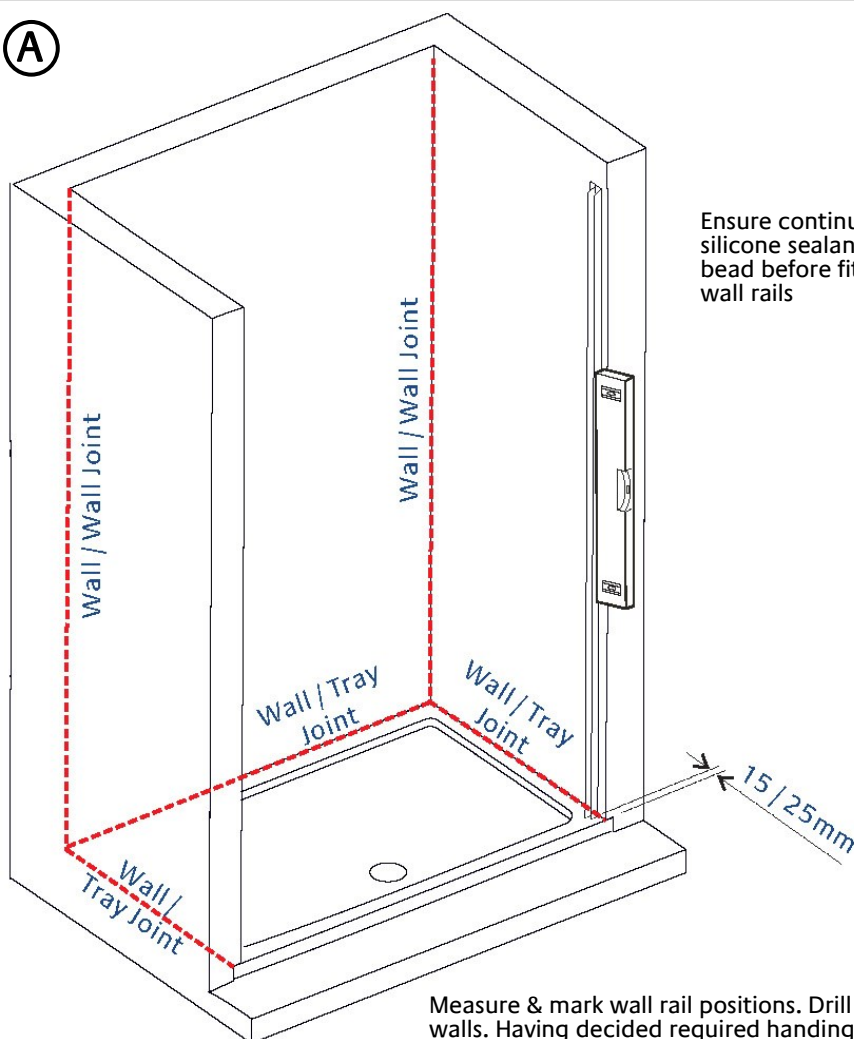


3mm HSS drill bit

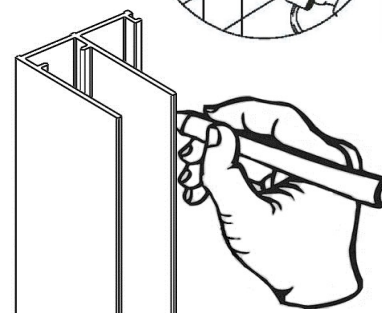
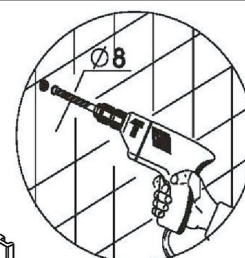
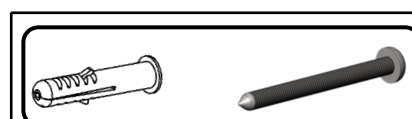
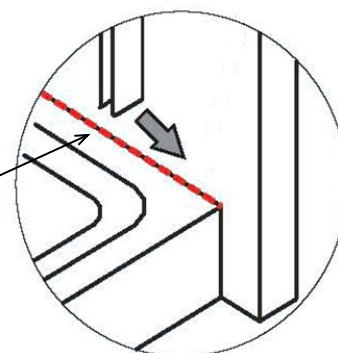


Ensure tray is correctly levelled & that tray / wall (tile) joints are sealed & cured over entire length of tray sides (See Fig A) prior to fitting enclosure.  
**DO NOT SEAL TRAY EDGES UPTO A FITTED ENCLOSURE !**

**A**



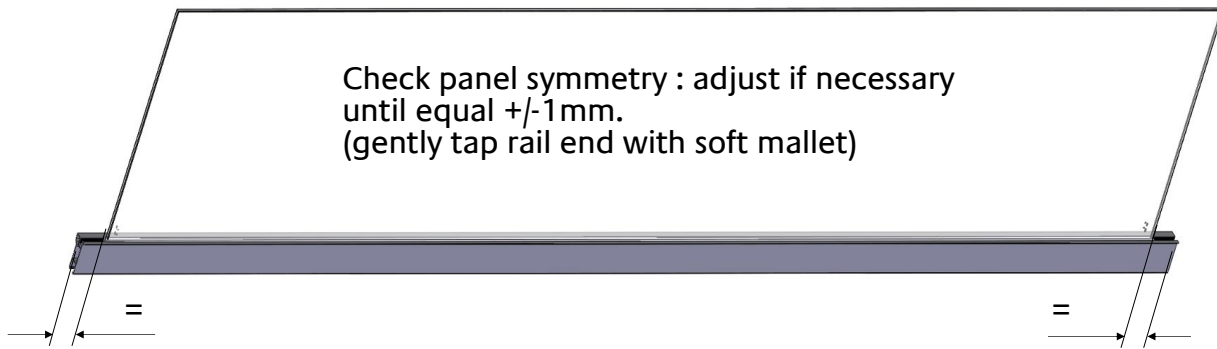
Ensure continuous silicone sealant bead before fitting wall rails



Measure & mark wall rail positions. Drill & plug walls. Having decided required handing, FIT DOOR SIDE WALL RAIL ONLY AT THIS STAGE.

## MAIN FRAME SUB ASSEMBLY: (Kitted models)

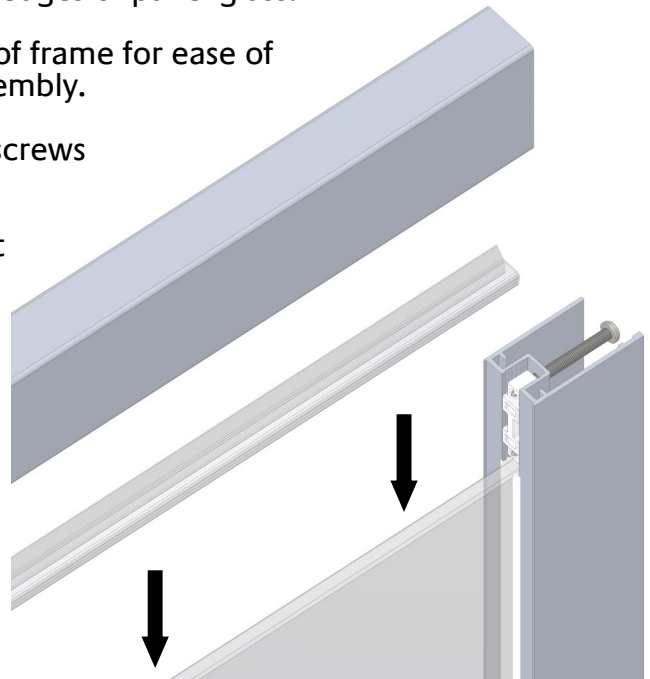
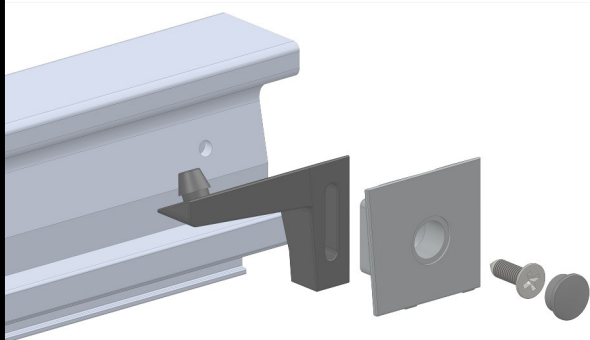
(B)



1 . Fit horizontal glazing seals to top & bottom edges of panel glass.  
Ensure seal is pushed up against vertical rail.  
(Note, horizontal seal may be omitted from top of frame for ease of construction). Seals may be 'wetted' to ease assembly.

2. Align horizontal rail & affix with 4 x 40 long screws  
(2 per corner).

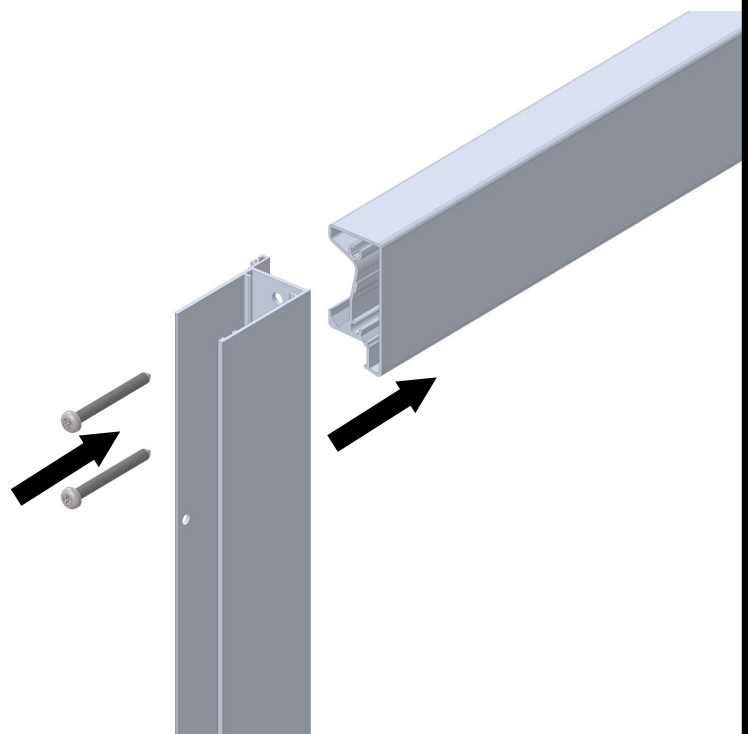
3. On tightening screws, ensure gaskets are not  
'pinched' in joint between rails.



4. Fit doorstops to rails in order shown. Doorstop buffers are marked 'Top' or 'Bottom', ensure correct stop is used in each rail.  
Fix with M3,5 x12mm self tapping screw.

5. Align horizontal rail & affix with  
4 x 40 long screws (2 per corner).

6. Slide lip seal into vertical rail at this point if ceiling clearance will prevent this once door is fully fitted. (Orient seal angled away from wall side.



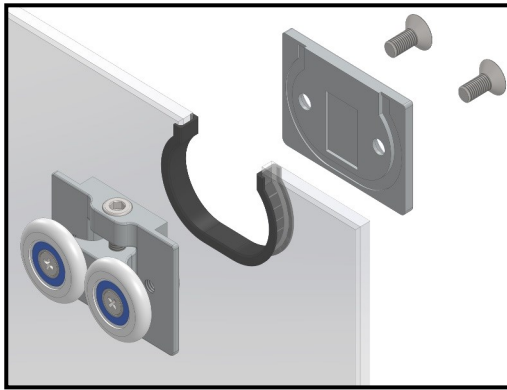
## DOOR ASSEMBLIES :



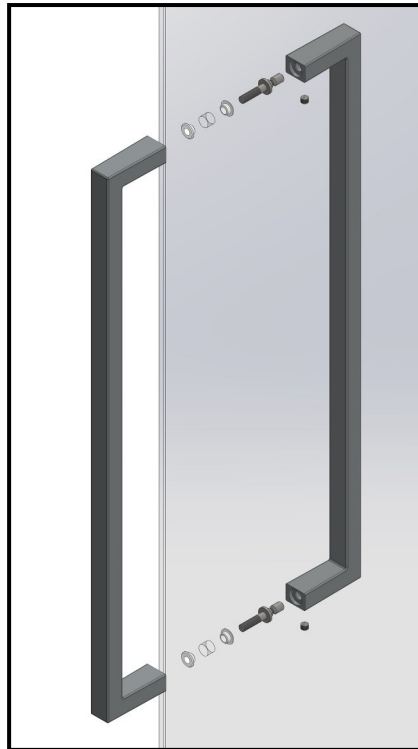
Right Hand

Wheels must be fitted to top & bottom of door glass as shown.

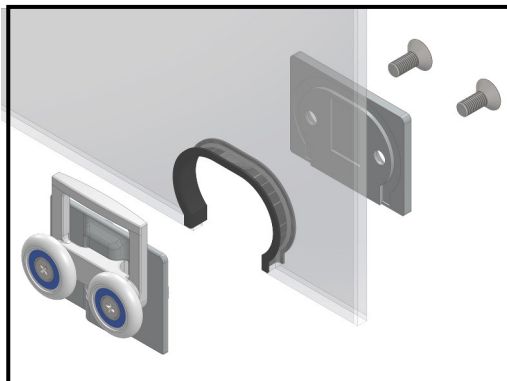
Left Hand



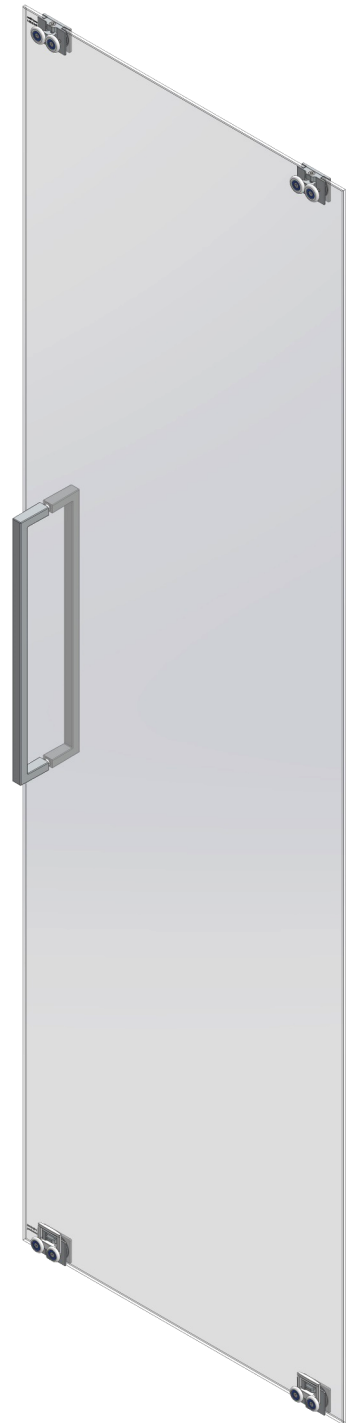
Loosely fit top wheels at this stage (adjusting screw head to top). Ensure screws are engaged in body, but do not tighten fully.



Fit handles to door glass.



Fit & fully tighten bottom wheels.

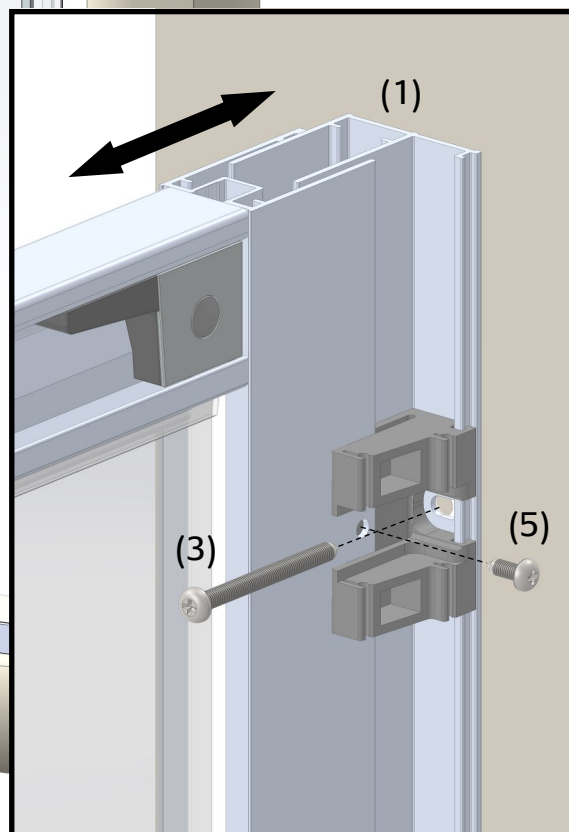




## MAIN FRAME SETUP :

Ⓓ

1. Fit panel side wall rail fully onto panel side of frame.
2. Keeping frame upright, lift over tray & insert into fixed wall rail.
3. Push panel end back, align & fix wall rail to wall with 4 x 45 long screws & cup

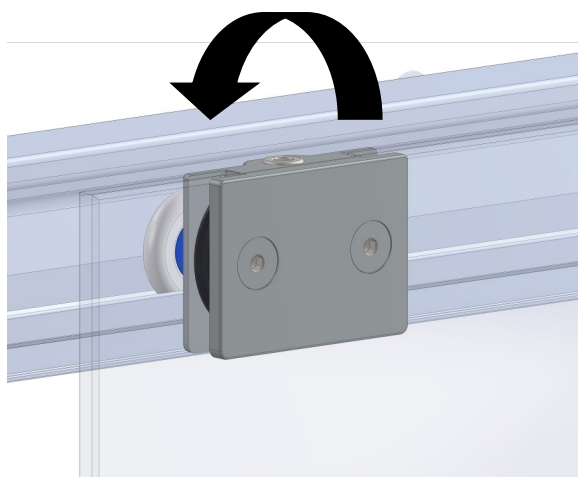


4. Manipulate frame within wall profiles until centred & ensure frame is completely plumb.
5. From inside enclosure, using the wall profile holes as a guide, drill (3mm) & screw frame to wall profiles using 3,5 x 10mm screws.



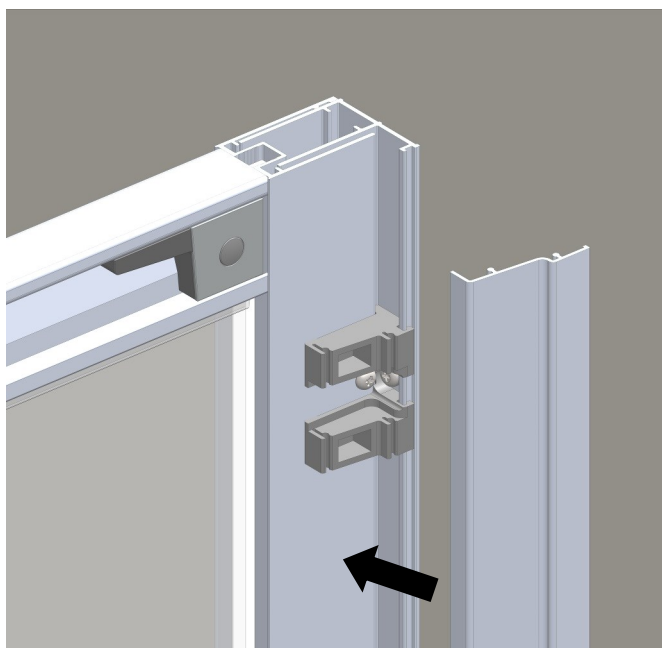
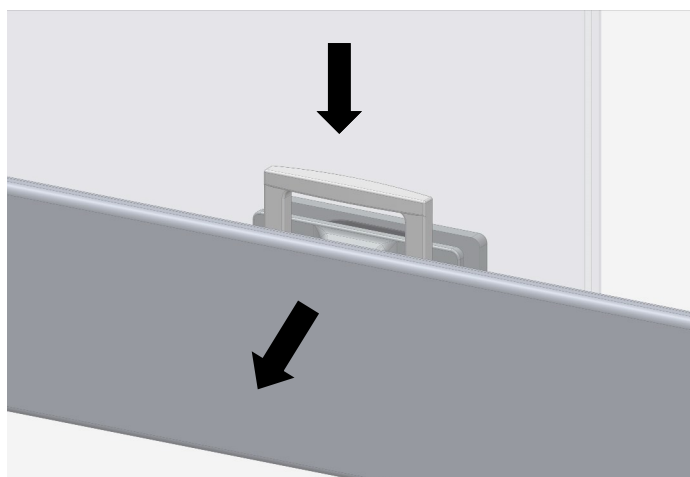
## DOOR HANGING & SEALS :

⑤

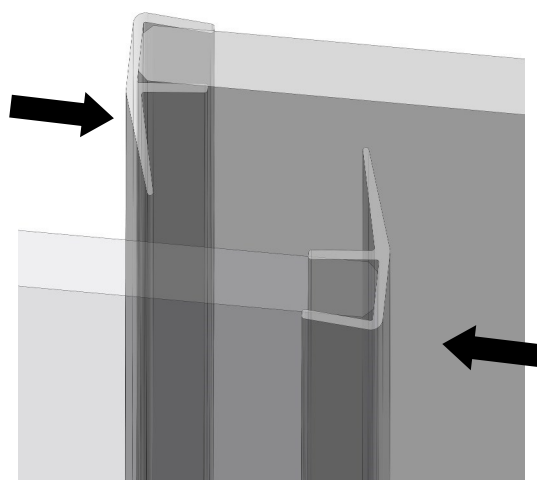


With wheel body loose on glass (screws engaged but not fully tightened) lift door & engage wheels in top rail & immediately tighten clamping screws.

Using buttons, engage bottom wheels in bottom rail.



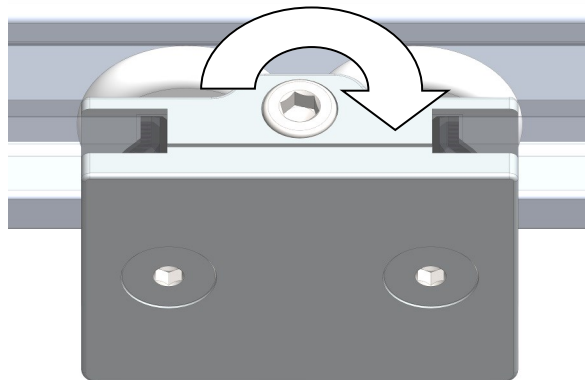
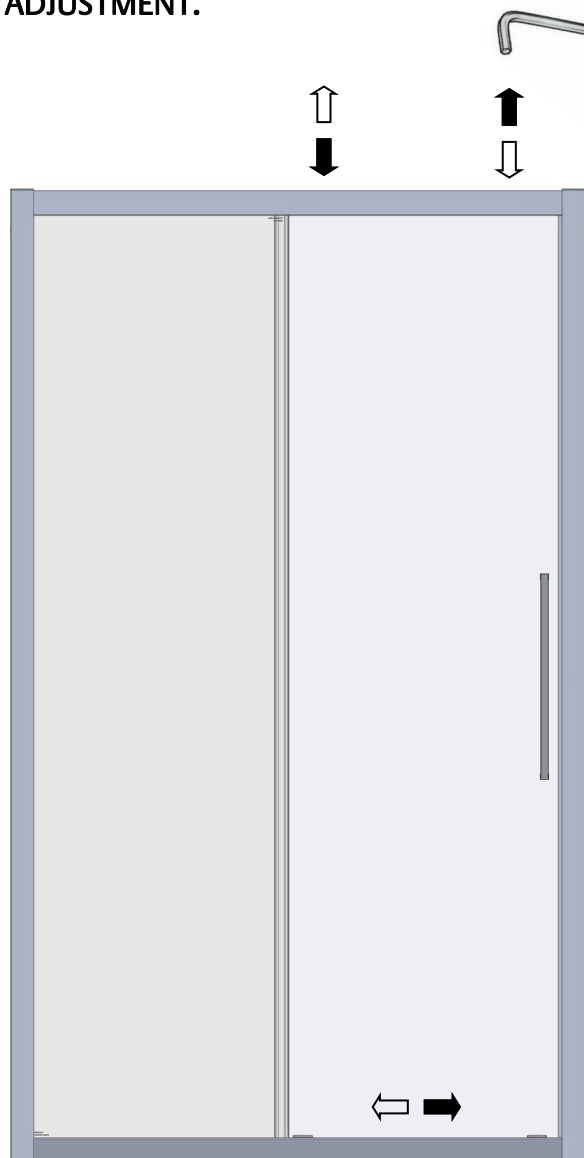
Clip cover strip to the wall profile ensuring it is engaged on all 3 clips.



Fit edge seals to trailing edge of door & leading edge of fixed panel.

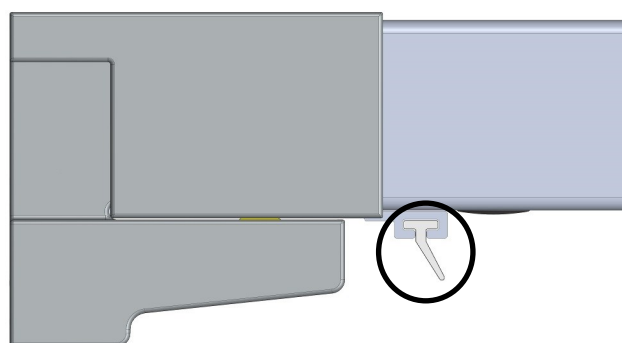
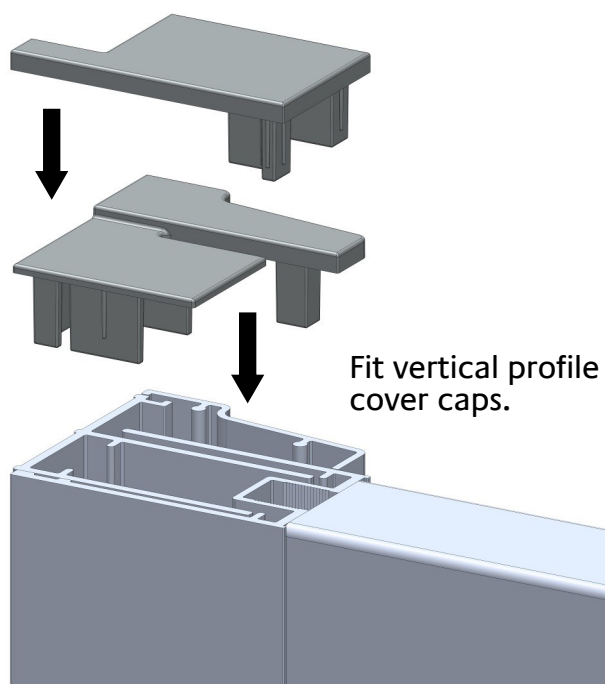
## DOOR ADJUSTMENT.

F



Using a 4mm Allen key, adjust door heights until even & doors run smoothly. Adjust door angles so that the door glass overlaps the lip seal equally when in the closed position. Turn adjusting screw clockwise to raise door.

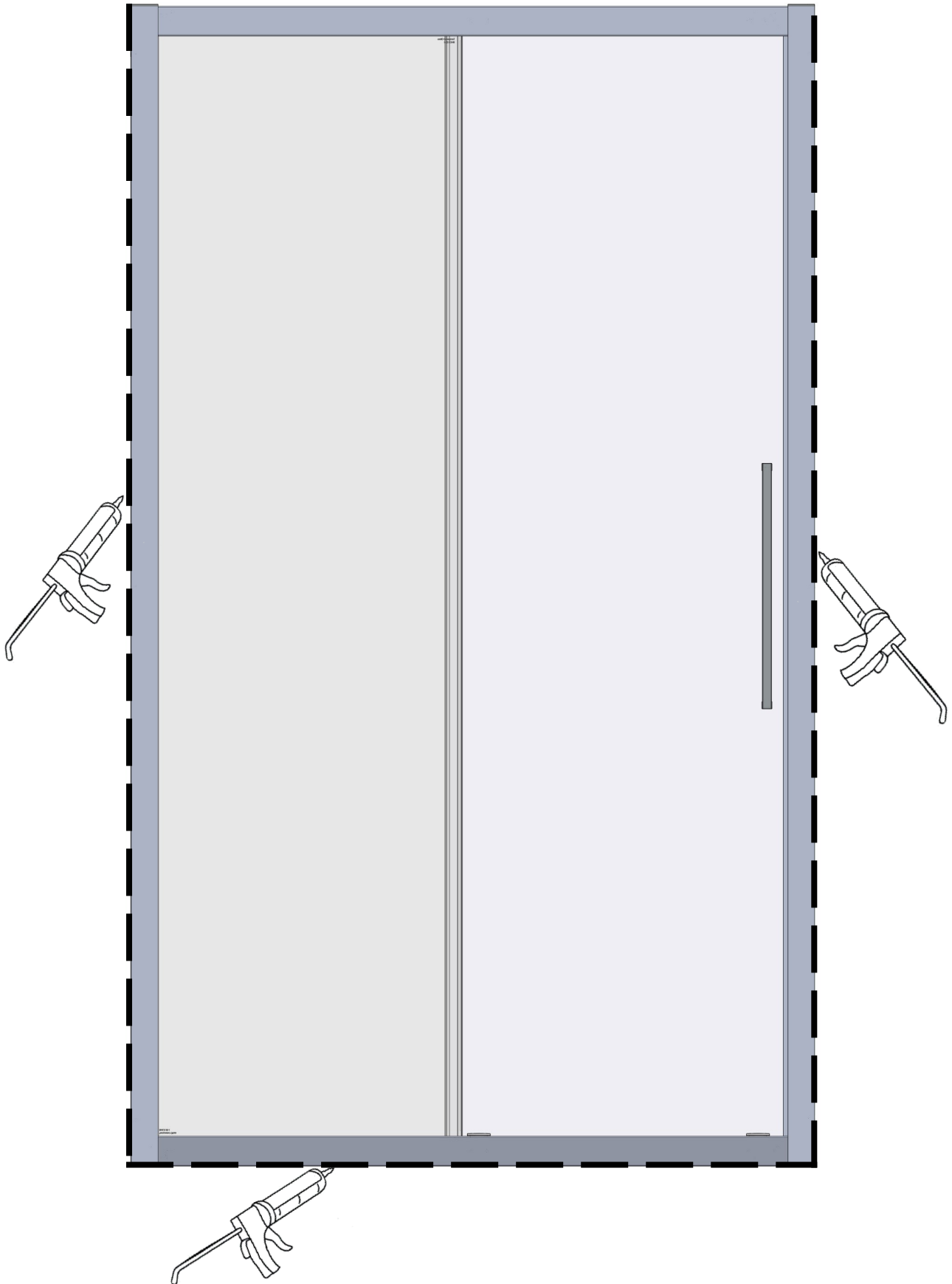
After adjusting, check that the wheel backplate screws are tight.



Fit lip seal into frame, ensure seal is angled away from wall side.

SEALING :

©



Use of good quality silicone sealant & cleaning / degreasing of all joint areas is recommended.  
Apply continuous silicone sealant bead as indicated EXTERNALLY ONLY

## **BASIC TROUBLESHOOTING :**

Door magnetic seals not meeting precisely / not holding :

Ensure magnetic seals are pushed fully onto door edge over entire door length.

Check door alignments & adjust if necessary (see fig F).

Check Magnetic Seal orientations (reverse if necessary).

Door motion noisy / Door not running smoothly / Door loose on bottom rail :

Check for edge seals dragging on glass (can cause 'clicking' noise).

Check top wheels engaged properly in rails & roll smoothly along rails.

Check door height adjustment ~ raise doors so that spring loaded bottom wheels are in contact with & roll smoothly along bottom rail.

Wheels & Grooves are factory greased, however over time this may disperse or become contaminated by dust etc, cleaning of grooves & re application of sanitary silicone based grease will restore & ensure smooth door motion.

### **Leakage :**

The sealing method described in these instructions relies on a continuous seal being applied between shower walls & tray before installing the enclosure (see fig A), it ensures a watertight seal around the perimeter of the enclosure to the shower walls & tray.

In the unlikely event of an enclosure leak, water will be visible on the outside of the enclosure itself, or around the perimeter silicone seal ONLY. Water / moisture appearing outside this area (ie at floor level) is normally due to incorrect tray installation.

## **Lakes Bathrooms Ltd**

Alexandra Way  
Ashchurch  
Tewkesbury  
Gloucestershire GL20 8NB

Service England, Scotland, Wales

8.30am—5pm Mon ~ Thurs

8.30am—4.30pm Fri

Tel / HELPLINE : 01684 853870

Fax : 01684 857411

[www.lakeshoweringspaces.com](http://www.lakeshoweringspaces.com)

Email : [admin@lakeshoweringspaces.com](mailto:admin@lakeshoweringspaces.com)

Service : Northern Ireland

Ian A Kernohan

Firtrees

Green Way Industrial Estate

Conlig

Northern Ireland

BT23 7SU

8.30am—5pm Mon ~ Thurs

8.30am—4.30pm Fri

Tel : 02891 270233

Fax : 02891 270597

Email : [info@iakonline.com](mailto:info@iakonline.com)