

# SS120 Hinged Panel Bathscreen

## Installation & Maintenance instructions

Rev. 01.19



**LAKES**  
SHOWERING SPACES

## **IMPORTANT NOTES :**

Please Read Carefully & retain these instructions for Future Reference.

1. For ease & safety we advise that two persons assemble this product.
2. Protect shower tray surfaces at all times.
3. Exposed glass corners / edges **MUST NOT** contact hard surfaces at any time.
4. Check for cables, pipes etc before drilling walls.
5. Ensure all surfaces are dry, clean & free of loose debris / dust.
6. Unpack goods with care (small parts can become lodged in packaging & inadvertently discarded). Check parts supplied against parts & fittings listed herein. Damaged parts / omissions may be resolved by calling Lakes Bathrooms Helpline.
7. Whilst precautions are taken in manufacture, care must be taken when handling as rail ends may have sharp edges.
8. Before commencing, check :
  - a) shower tray (or base) is level & completely sealed to finished / tiled walls.
  - b) finished walls are sound & free of cracks, loose tiles / grout.
8. AFTER INSTALLATION, DO NOT 'WET' ENCLOSURE FOR 48 HOURS TO ENSURE FULL CURE OF SILICONE SEALANT.

## **USE :**

### **General Care & Maintenance.**

Provided this product is installed & operated in accordance with these instructions, problems should not arise. However should maintenance be required it should be carried out by a competent person with reference to these instructions. Before any work is carried out the root cause of the problem must be identified. Lakes Bathrooms service engineers are available if necessary to consult / carry out remedial work. Call Lakes Bathrooms HELPLINE.

### **Cleaning.**

(Every one to two weeks depending on local water {hardness} conditions).

All glass panels in this product have a hydrophobic coating aiding 'runoff' of water droplets, reducing the need for frequent cleaning. For best appearance / product life however, regular cleaning is recommended.

Use **ONLY** mild soap / detergent solutions to clean. Rinse with water, squeegee glass panels & wipe frames dry with a soft cloth. Under no circumstances should abrasive, caustic or scouring products be used. Non compliance with these cleaning instructions may cause decorative finishes to deteriorate & could adversely affect safe operation of the enclosure.

### **Daily Care.**

To prevent the build up of limescale, do not allow water droplets to dry on glass or frames. After showering, rinse with water, remove droplets from glass with a squeegee & wipe frame with a soft cloth.

### **Customer Service.**

Quality Guarantee : Lakes Bathrooms Ltd guarantee Shower Doors & Enclosures against any manufacturing or material defects for the lifetime of the product. We will resolve defects free of charge by repairing / replacing parts as we feel necessary. To be 'free of charge' service work must be carried out by Lakes Bathrooms or approved agents.

Seals are considered 'wear & tear' parts, as such they are guaranteed for 12 months from purchase. Not Covered by this Guarantee : Damage or defects that result from improper installation, improper use, or lack of maintenance (including limescale buildup). Damage or defects that result from repairs / modifications undertaken by unauthorized persons. This guarantee is in addition to statutory & other legal rights.

What to do if something goes wrong : Should the product not function correctly on initial use, firstly, contact the installer to check that unit installation & commissioning are in accordance with these instructions. Should this not resolve difficulties or should performance decline, consult 'Troubleshooting' section to see if simple home maintenance is needed. Alternatively our HELPLINE staff can assist, or if necessary arrange for a service engineer to visit.

Spare : We maintain extensive spare part stocks. Spares can be ordered / purchased from your retailer in the first instance. Parts will normally be dispatched within two working days from order placement.

## **Daily Care.**

To prevent the build up of limescale, do not allow water droplets to dry on glass or frames. After showering, rinse with water, remove droplets from glass with a squeegee & wipe frame with a soft cloth.

## **Customer Service.**

**Quality Guarantee :** Lakes Bathrooms Ltd guarantee Shower Doors & Enclosures against any manufacturing or material defects for the lifetime of the product. We will resolve defects free of charge by repairing / replacing parts as we feel necessary. To be 'free of charge' service work must be carried out by Lakes Bathrooms or approved agents.

**Not Covered by this Guarantee :** Damage or defects that result from improper installation, improper use, or lack of maintenance (including limescale buildup). Damage or defects that result from repairs / modifications undertaken by unauthorized persons. This guarantee is in addition to statutory & other legal rights.

**What to do if something goes wrong :** Should the product not function correctly on initial use, firstly, contact the installer to check that unit installation & commissioning are in accordance with these instructions. Should this not resolve difficulties or should performance decline, consult 'Troubleshooting' section to see if simple home maintenance is needed. Alternatively our HELPLINE staff can assist, or if necessary arrange for a service engineer to visit.

**Spares :** We maintain extensive spare part stocks. Spares can be ordered / purchased from your retailer in the first instance. Parts will normally be dispatched within two working days from order placement.

**Pro Forma invoices** will be sent for cheque payments.

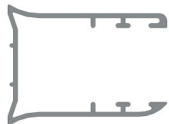
## Parts supplied:



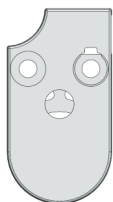
1x Fixed Panel



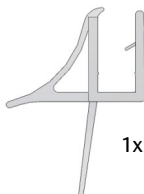
1x Hinge Panel



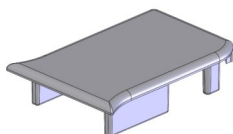
1x Wall Profile



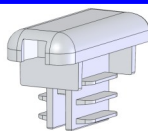
2x Hinge (Handed pair)



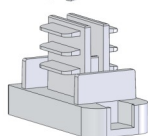
1x Bottom Seal



2x Wall Profile Cap (Handed Pair)



1x Top Plug



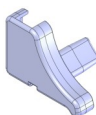
1x Bottom Plug



2x Glazing Gasket



2x Hinge Washer



2x Seal End Cap (Handed Pair)



3x Wall Plug



3x 60mm M5 Screw



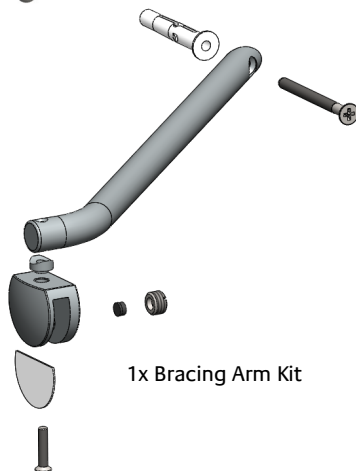
4x 30mm M4 screw



3x 10mm M3.5 Screw, Washer & Cover cap



1x Hinge Seal



1x Bracing Arm Kit

## Tools Required:



Spirit level with



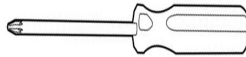
Good quality silicone  
sealant and applicator



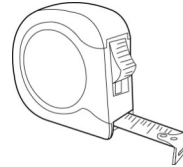
Power drill with 8mm



Pencil



Pozidriv Screwdriver

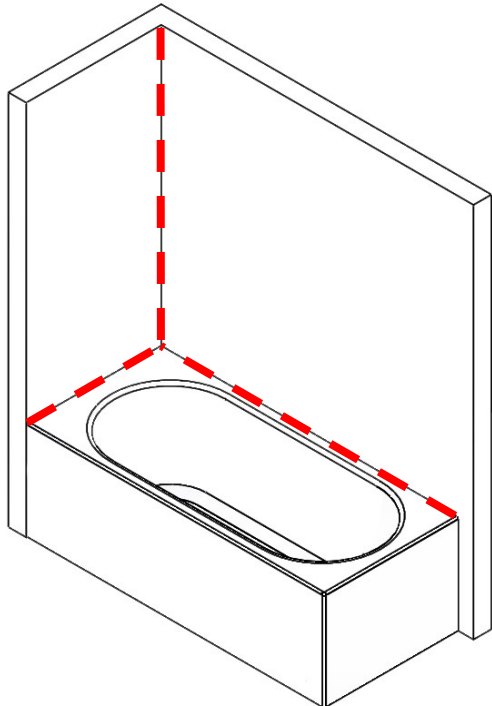


Tape measure

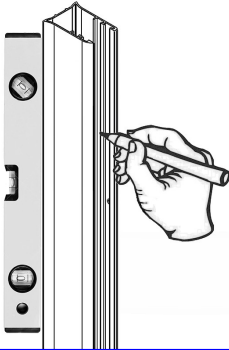
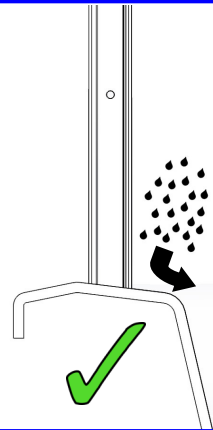
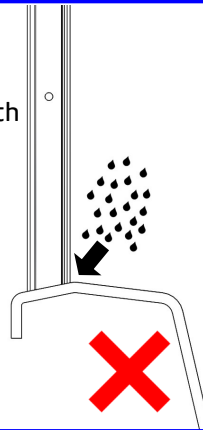


3mm HSS drill bit

Lakes fully reversible hinged panel bathscreen for fitting left or right handed to suitable bathtub. Ensure bath rim is level & that bath / wall (tile) joints are sealed & cured over entire length of bath sides as shown prior to fitting screen. **DO NOT SEAL BATH EDGES UP TO A FITTED SCREEN!**

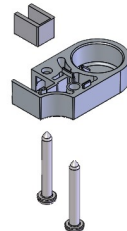
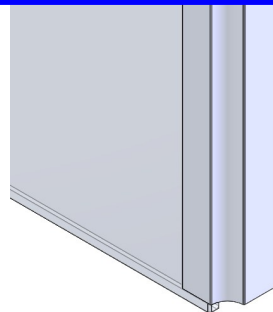
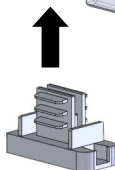
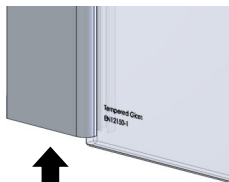
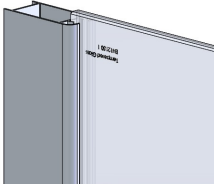


It is important to assess the fall of the bath rim and position the wall profile so that any water runs off into the bath and does not pool on the bath rim



With the curved face of the wall profile facing outwards, use the spirit level to ensure wall profile is plumb, mark screw holes then drill the wall with the 8mm masonry bit, plug and affix the wall profile using 3x 60mm M5 screws

Determine the hand of the screen and insert the top & bottom plugs into the glass profile and making sure the glass gasket is in place, affix the bottom hinge using 2 of the 30mm M4 screws.

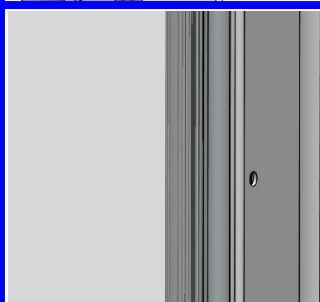


1

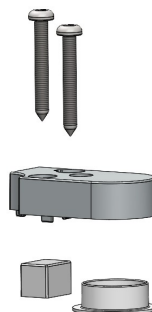
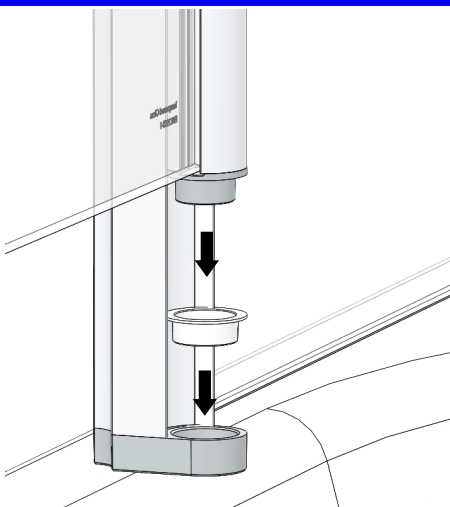
1. Fit the hinge seal into the groove on the hinge profile.

2. Slide the fixed panel assembly into the wall profile and position so that the bottom of the panel sits on the rim of the bathtub & is plumb.

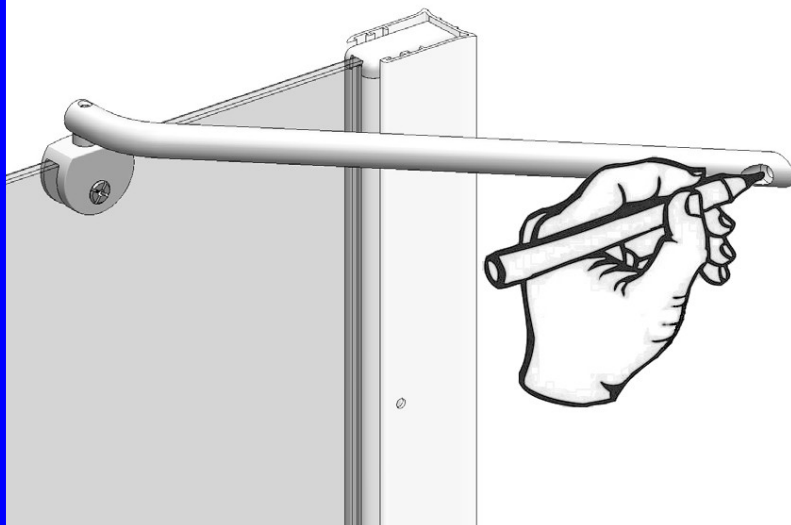
2



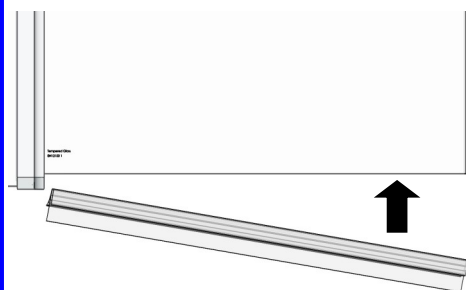
Using the wall profile holes as a guide, drill the 3mm holes and then secure the fixed panel using the 10mm M3.5 screws and washers then push on the cover caps.



Ensuring the washer is in place, lower hinge panel into bottom hinge. Check glass gasket & top bearing washer are fitted as shown, hold panel upright in place & fit top hinge with 2x 30mm M4 screws.

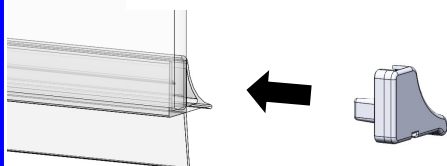


Loosen clamping screw then place bracing arm on glass as shown. Position arm so that the wall end sits flush with the wall the mark the hole position, drill (8mm), plug & affix to wall using 5mm x 60mm screw. Ensuring the gasket is in position in the bracing arm, tighten the clamping screw.

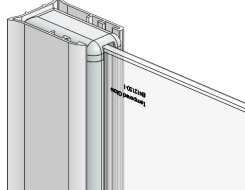


Fit the bottom seal to the hinge panel. Seal may be “wetted” to aid fitting.

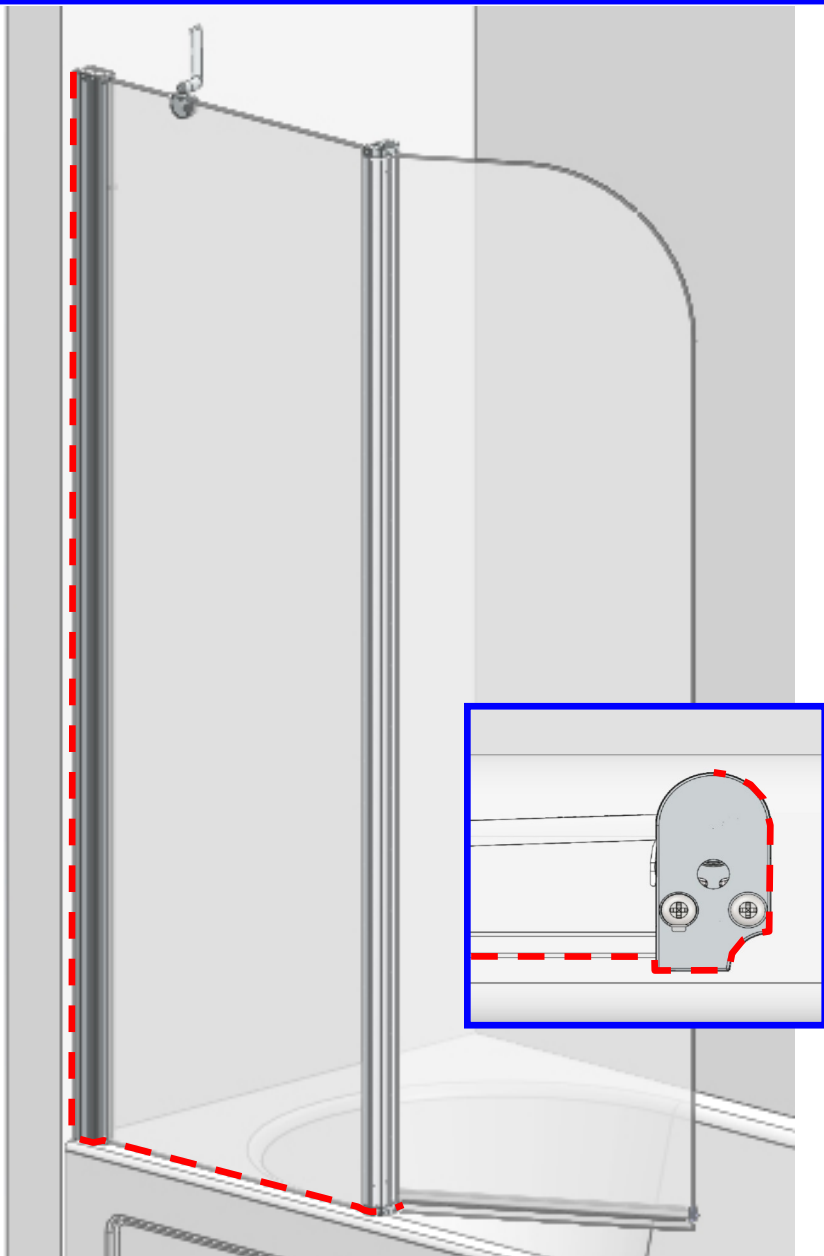
Fit end cap to end of seal.  
A small blob of silicone can be used to secure cap.



Fit wall profile top cap







Use of good quality silicone sealant & cleaning / degreasing of all joint areas is recommended.

Apply continuous silicone sealant bead as indicated EXTERNALLY ONLY

## **BASIC TROUBLESHOOTING :**

Screen hinges noisy / not moving smoothly : Apply sanitary silicone based grease to hinge bearing inner diameters. Check that hinge seal is not distorted or trapped in gap between profiles.

Leakage in area of bottom hinge : ensure bottom seal is pushed fully up to bottom hinge.

Water pooling on inside of screen :

Check 'fall' of bath rim is toward bathing area (certain bathtubs are unsuitable for screens of this type).

Leakage :

The sealing method described in these instructions relies on a continuous seal between walls & bathtub before installing the screen (see fig A), & positioning of the screen inside the 'high' point of the rim, then ensures a watertight seal around the perimeter, & prevents 'pooling' against the screen. Should 'pooling' be a problem it is likely due to incorrect screen / rim positioning. In the unlikely event of a screen leak, water will be visible on the outside of the screen itself or around the perimeter silicone seal ONLY. Water / moisture appearing outside this area (ie at floor level, or under bathtub) is normally due to incorrect bathtub / screen sealing.

### **Lakes Bathrooms Ltd**

Alexandra Way  
Ashchurch  
Tewkesbury  
Gloucestershire GL20 8NB

Service England, Scotland, Wales.

8.30am—5pm Mon ~ Thurs

8.30am—4.30pm Fri

Tel / HELPLINE : 01684 853870

Fax : 01684 857411

[www.lakesbathrooms.co.uk](http://www.lakesbathrooms.co.uk)

Email : [admin@lakesbathrooms.co.uk](mailto:admin@lakesbathrooms.co.uk)

### **Service : Northern Ireland**

Ian A Kernohan

Firtrees  
Green Way Industrial Estate  
Conlig  
Northern Ireland BT23 7SU

8.30am—5pm Mon ~ Thurs

8.30am—4.30pm Fri

Tel : 02891 270233

Fax : 02891 270597

Email : [info@iakonline.com](mailto:info@iakonline.com)