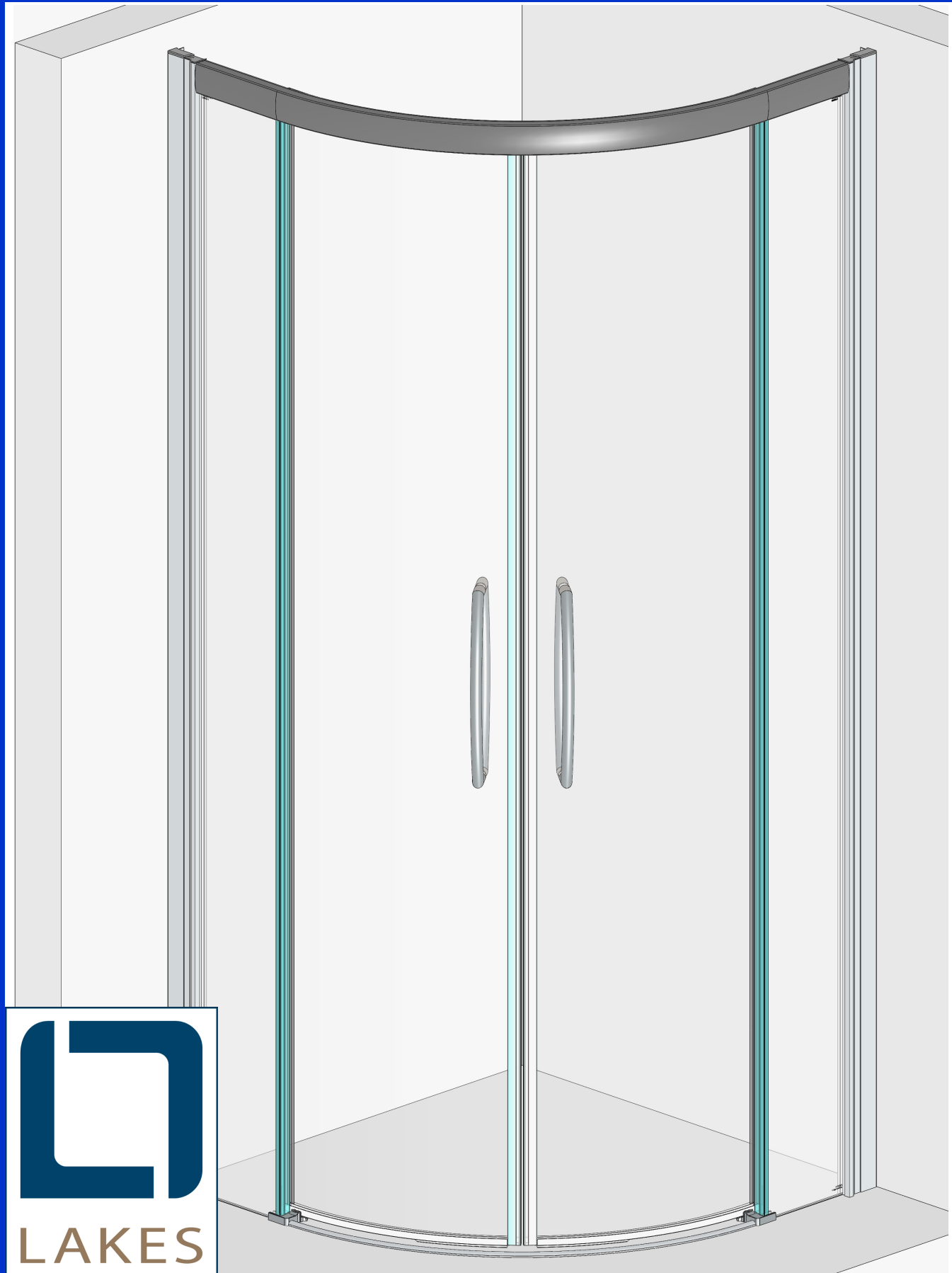


Quadrant Enclosure (V3 ~ Bottom rail-less)

Installation / Maintenance Instructions

Rev 01.19



IMPORTANT NOTES :

Please Read Carefully & retain these instructions for Future Reference.

1. For ease & safety we advise that two persons assemble this product.
2. Protect shower tray surfaces at all times.
3. Exposed glass corners / edges MUST NOT contact hard surfaces at any time.
4. Check for cables, pipes etc before drilling walls.
5. Ensure all surfaces are dry, clean & free of loose debris / dust.
6. Unpack goods with care (small parts can become lodged in packaging & inadvertently discarded). Check parts supplied against parts & fittings listed herein. Damaged parts / omissions may be resolved by calling Lakes Bathrooms Helpline.
7. Whilst precautions are taken in manufacture, care must be taken when handling as rail ends may have sharp edges.
8. Before commencing, check :
 - a) shower tray (or base) is level & completely sealed to finished / tiled walls.
 - b) finished walls are sound & free of cracks, loose tiles / grout.
8. AFTER INSTALLATION, DO NOT 'WET' ENCLOSURE FOR 48 HOURS TO ENSURE FULL CURE OF SILICONE SEALANT.

USE :

General Care & Maintenance.

Provided this product is installed & operated in accordance with these instructions, problems should not arise. However should maintenance be required it should be carried out by a competent person with reference to these instructions. Before any work is carried out the root cause of the problem must be identified. Lakes Bathrooms service engineers are available if necessary to consult / carry out remedial work. Call Lakes Bathrooms HELPLINE.

Cleaning.

(Every one to two weeks depending on local water {hardness} conditions).

All glass panels in this product have a hydrophobic coating aiding 'runoff' of water droplets, reducing the need for frequent cleaning. For best appearance / product life however, regular cleaning is recommended.

Use ONLY mild soap / detergent solutions to clean. Rinse with water, squeegee glass panels & wipe frames dry with a soft cloth. Under no circumstances should abrasive, caustic or scouring products be used. Non compliance with these cleaning instructions may cause decorative finishes to deteriorate & could adversely affect safe operation of the enclosure.

Daily Care.

To prevent the build up of limescale, do not allow water droplets to dry on glass or frames. After showering, rinse with water, remove droplets from glass with a squeegee & wipe frame with a soft cloth.

Customer Service.

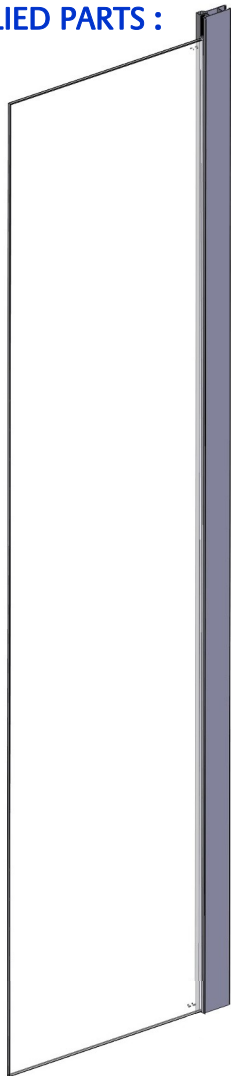
Quality Guarantee : Lakes Bathrooms Ltd guarantee Shower Doors & Enclosures against any manufacturing or material defects for the lifetime of the product. We will resolve defects free of charge by repairing / replacing parts as we feel necessary. To be 'free of charge' service work must be carried out by Lakes Bathrooms or approved agents.

Seals are considered 'wear & tear' parts, as such they are guaranteed for 12 months from purchase. Not Covered by this Guarantee : Damage or defects that result from improper installation, improper use, or lack of maintenance (including limescale buildup). Damage or defects that result from repairs / modifications undertaken by unauthorized persons. This guarantee is in addition to statutory & other legal rights.

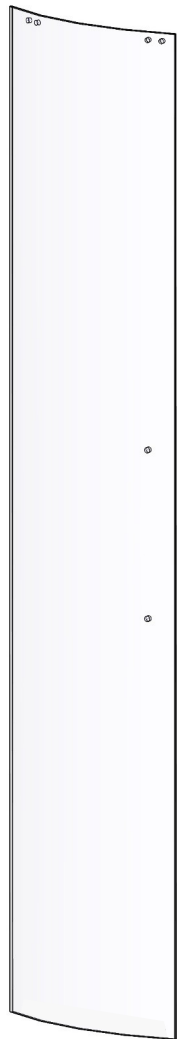
What to do if something goes wrong : Should the product not function correctly on initial use, firstly, contact the installer to check that unit installation & commissioning are in accordance with these instructions. Should this not resolve difficulties or should performance decline, consult 'Troubleshooting' section to see if simple home maintenance is needed. Alternatively our HELPLINE staff can assist, or if necessary arrange for a service engineer to visit.

Spares : We maintain extensive spare part stocks. Spares can be ordered / purchased from your retailer in the first instance. Parts will normally be dispatched within two working days from order placement.

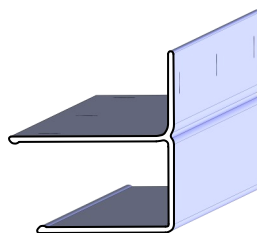
SUPPLIED PARTS :



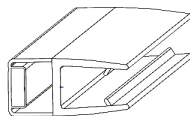
Panel Sub Assy (2x)
Fig B



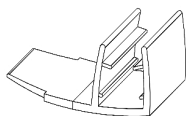
Door Glass (2x)
fig E



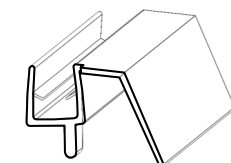
Wall Rail (2x)
1850mm fig A



Magnetic Seal
(2x) fig E / F



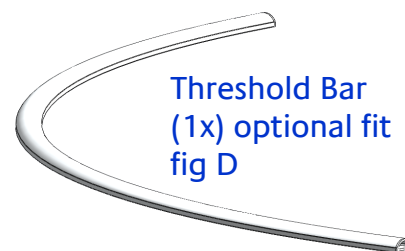
Edge Seals fig E / F
1817mm (2x)
1788mm (2x)



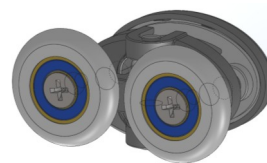
Bottom Seal 4x



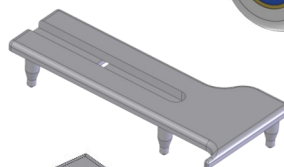
Horizontal Rail
(complete with
doorstops &
glazing blocks)



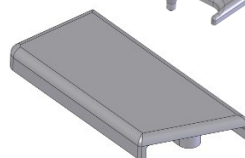
Threshold Bar
(1x) optional fit
fig D



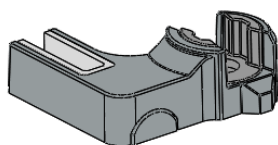
Wheel Assy
(4x) fig E



Top Cap (Vertical Profile)
(handed pair) fig D



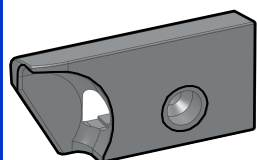
Top Cap (Wall Profile)
(handed pair) fig D



Guide Kit
(handed pair)
Fig D



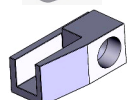
Handle Kit
(2x) fig E



Doorstop Block
(2x handed pair)



Doorstop Buffer (4x)



Glazing Block (handed pair) fig B



3,5 x 40 long self tapping
screw (4x) fig B



4 x 45 long self tapping
screw (6x) Fig C



7,5 x 39mm Wall Plug(6x) Fig A



3,5 x 12 long CSK self tapping
screw (6x) fig B



3,5 x 10 long Pan Head self tapping
screw (6x)



Cup Washer (12x) fig C / D



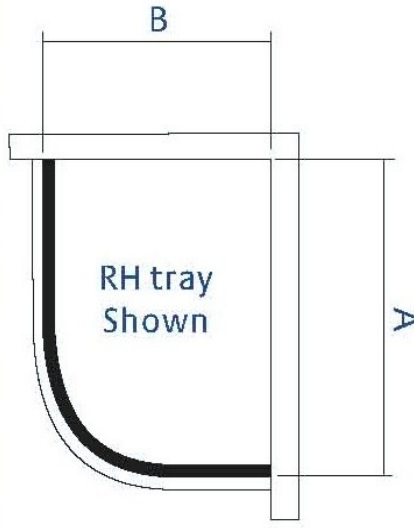
Decorative Screw Cover Cap (12x) fig C / D



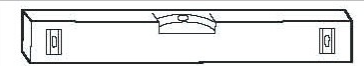
Decorative Screw Cover Cap (6x) fig B

Standard Sizes :
Symmetric Units:
800mm, 900mm, & 1000mm.
Offset Units:
900800mm,
1000800mm,
1200800mm,
1200900mm.

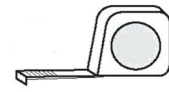
Size ref	Adjustment Range (Dim'n A or B)
800mm	765 to 795mm
900mm	865 to 895mm
1000mm	965 to 995mm
1200mm	1165 to 1195mm



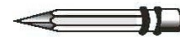
Tools Required



Spirit Level (with vertical 'bubble')



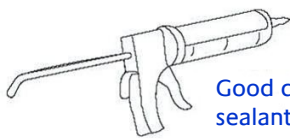
Tape Measure



Pencil



Power drill &
8mm masonry bit



Good quality silicone
sealant & applicator



Pozidriv
Screwdriver

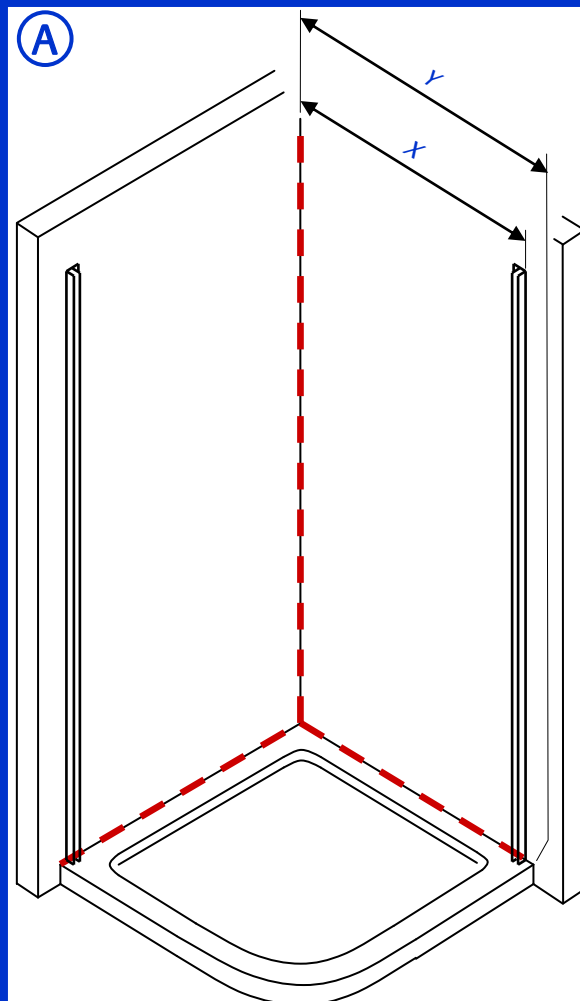


3mm HSS
drill bit



2.5mm
Hexagon
(Allen) key

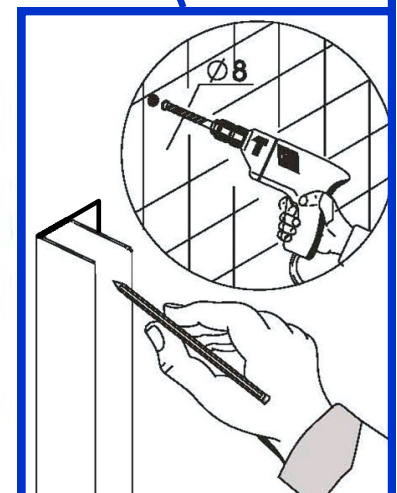
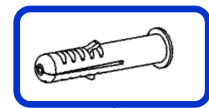
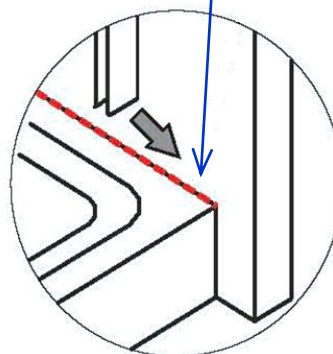
Lakes Offset Quadrant is fully reversible, so is suitable for fitting to right or left hand trays.
Ensure tray is correctly levelled & that tray / wall (tile) joints are sealed & cured over entire
length of tray sides (See Fig A) prior to fitting enclosure.
DO NOT SEAL TRAY EDGES UPTO A FITTED ENCLOSURE !



Wall Profile Position (To Outside)
& Tray Protrusion

Size	Dim'n X	Dim'n Y (Minimum)
800	780mm	785mm
900	880mm	885mm
1000	980mm	985mm
1200	1180mm	1185mm

Ensure continuous
silicone sealant
bead before fitting
wall rails

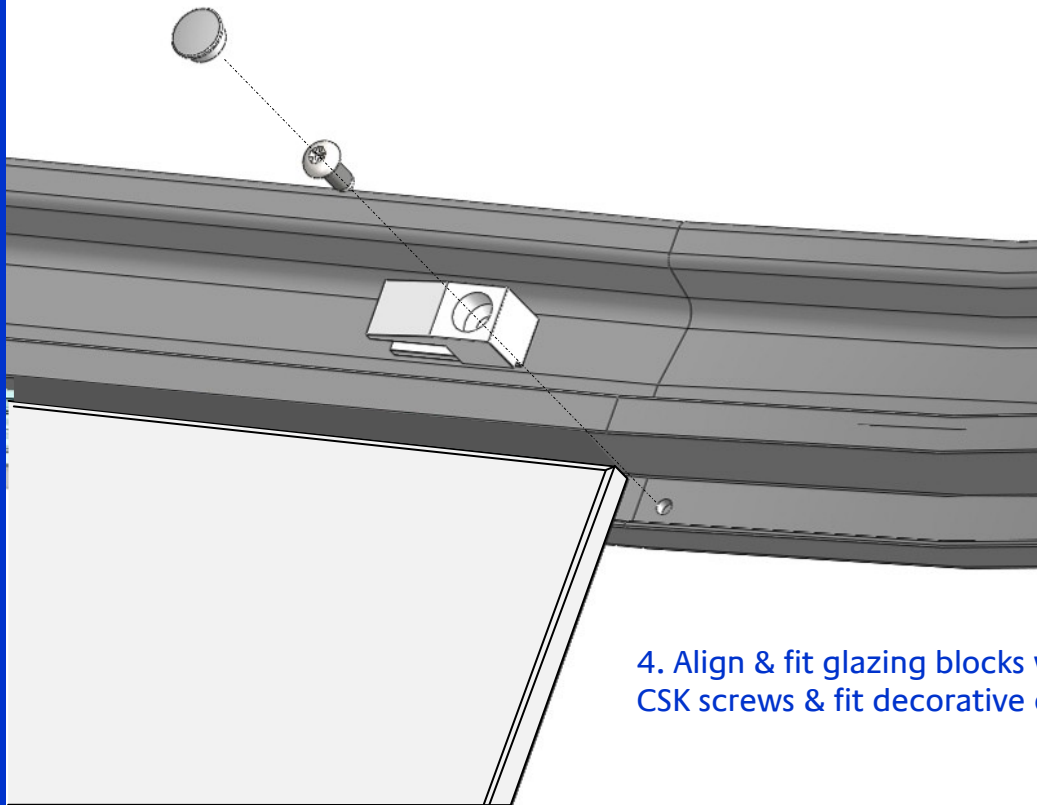
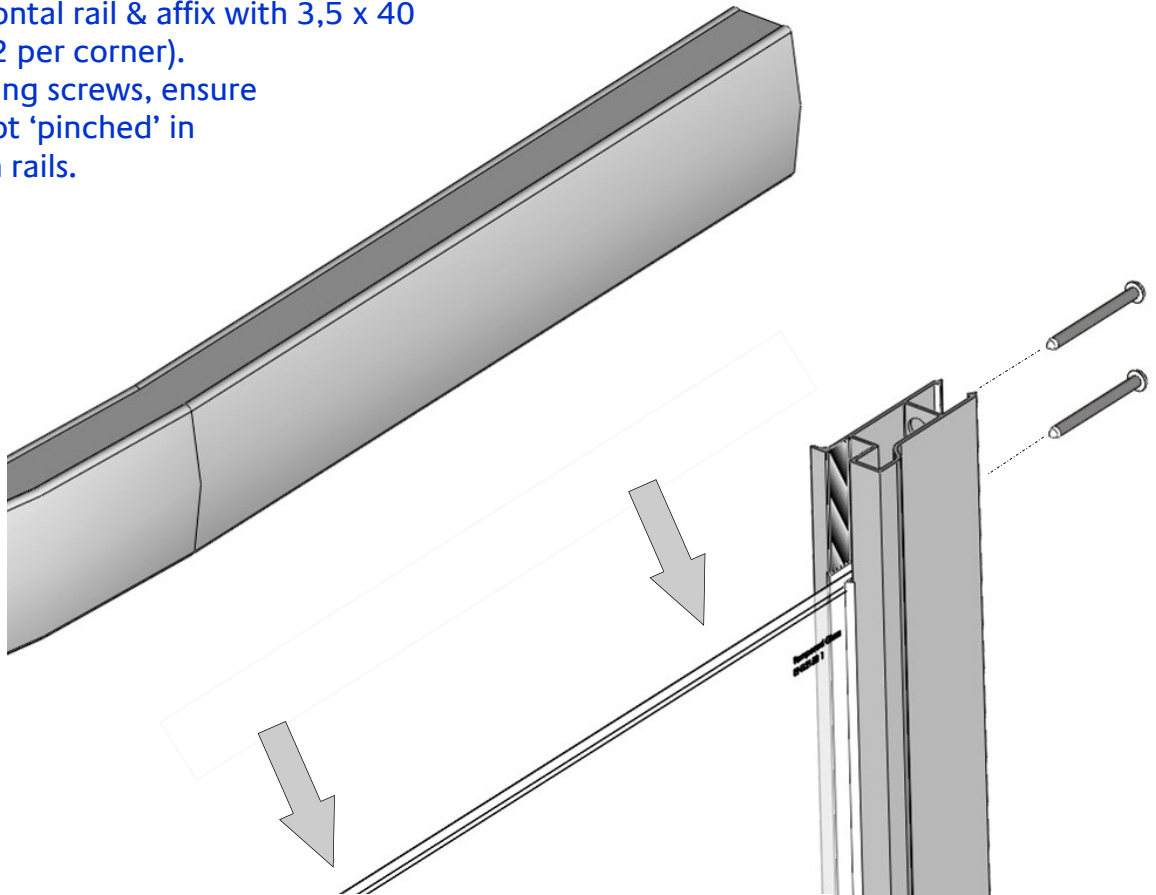


Wall profile orientation : Wall flange to shower side. Measure & mark wall rail positions,
(ensure rail is fully inboard of tray rim), drill & plug walls only at this stage.

MAIN FRAME SUB ASSEMBLY:

(B)

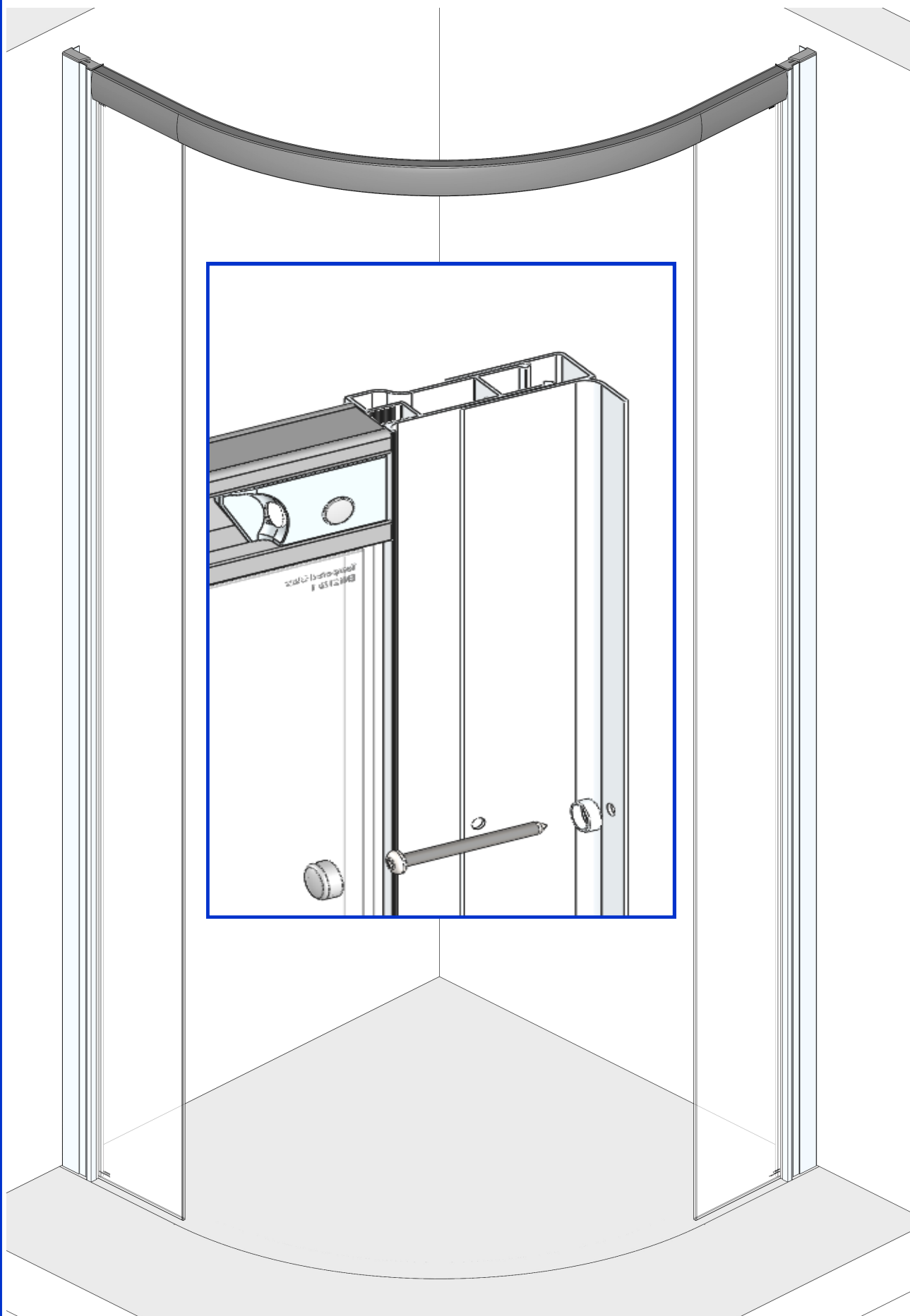
1. Align horizontal rail & affix with 3,5 x 40 long screws (2 per corner).
2. On tightening screws, ensure gaskets are not 'pinched' in joint between rails.



4. Align & fit glazing blocks with 3,5 x 12 long CSK screws & fit decorative cover caps (4 places).

5. Once assembled, stand main frame on flat surface & check for correct location of horizontal profiles : measure frame height at centre of curve (1850mm) & squareness at corners. If required, loosen frame corner screws, adjust as necessary & re tighten.

MAIN FRAME SETUP :

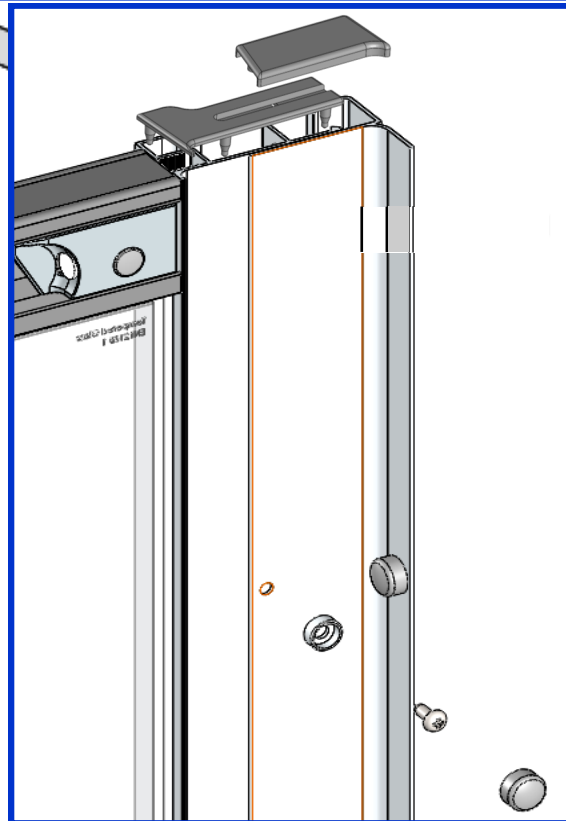
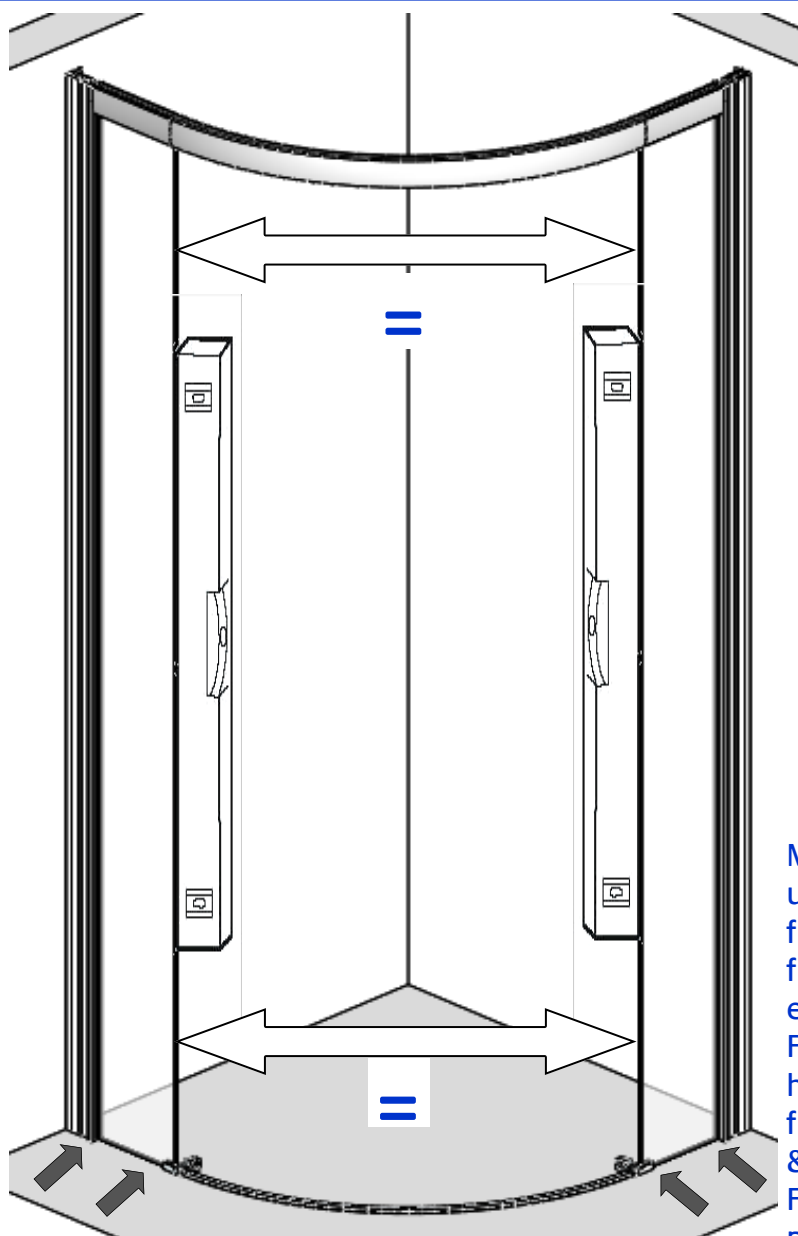
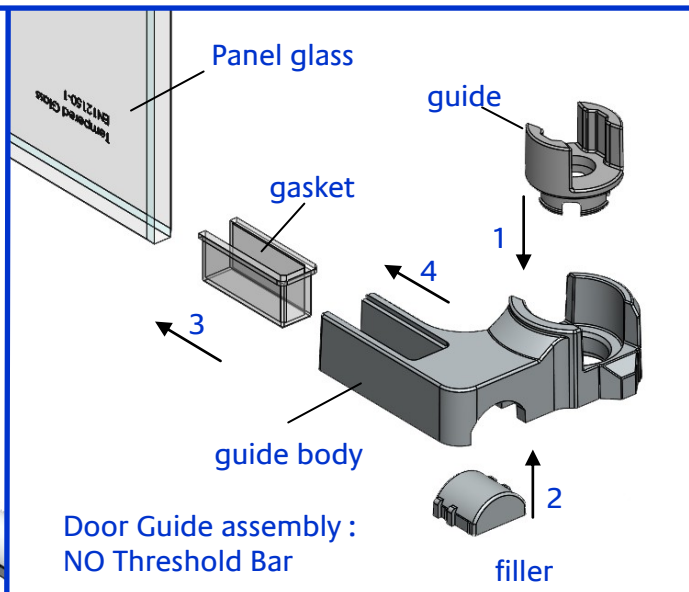
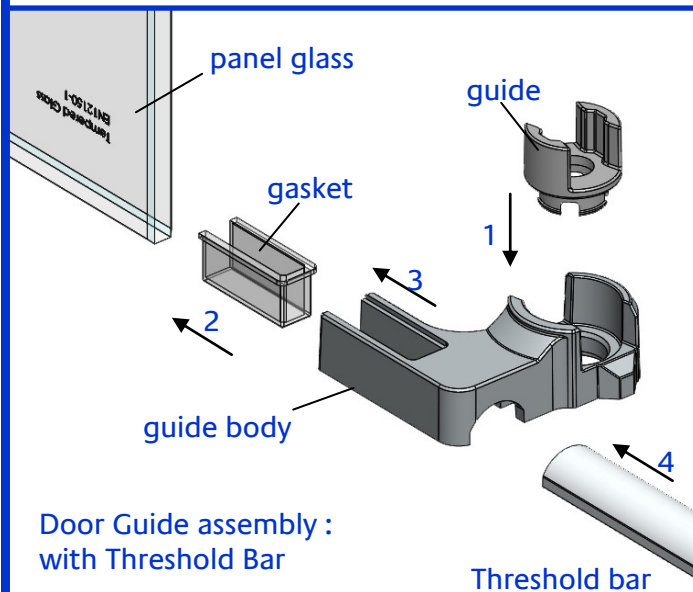


Loosely fit wall profiles onto frame verticals, lift frame into position. From inside enclosure, align wall profiles with wall plugs & affix wall profiles to both walls using cup washers & 4 x 45mm screws (6 places—3 per profile).

DOOR GUIDES, THRESHOLD BAR & FRAME FIXING:

D

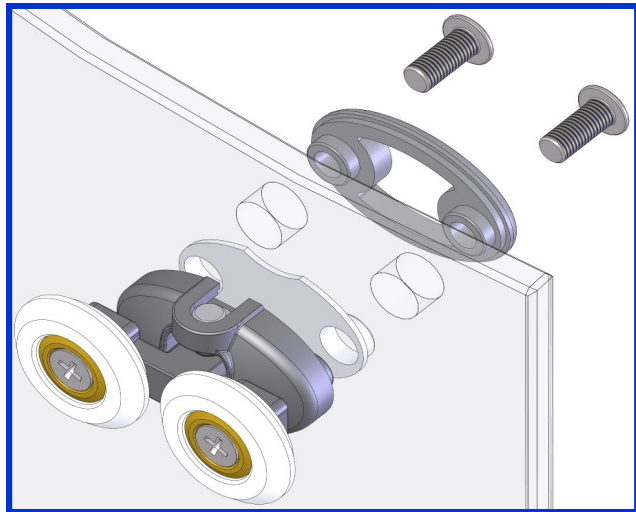
Unit is supplied with an optional threshold bar which aids, & is recommended to ensure watertightness. It is at the customer's discretion whether to fit or not, but may be added or removed after installation if required.



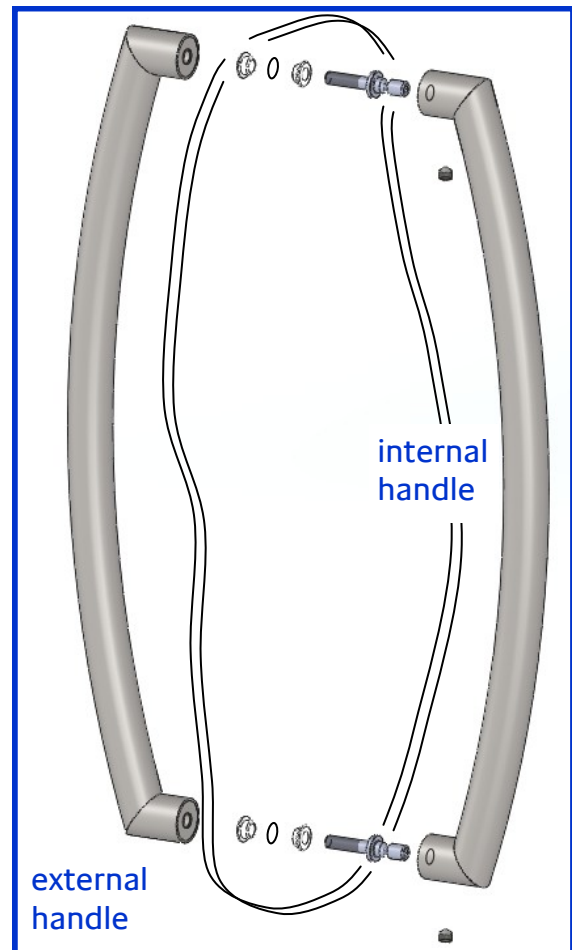
Manipulate frame within wall profiles until even gap is achieved between frame & tray edge. Check both sides of frame for plumb & check panel gap is equal top & bottom.
From inside enclosure, using wall profile holes as a guide, drill (3mm) & screw frame to wall profiles using cup washers & 3,5 x 10mm screws & caps (6 places). Fit top caps to top of wall / vertical profiles.

DOOR ASSEMBLIES : Left hand door build shown ('mirror' for Right hand door).

E



Loosely fit top wheels at this stage (adjusting screw head to underside). Ensure screws are engaged in body, but do not tighten fully & do not fit cover at this stage.



See following page
for seal fit
instructions

Pass threaded end of pins through washer / glass / washer, then screw into external handle with 2,5mm hexagon wrench (Allen Key). Offer internal handle onto visible internal pin spigots, squeeze handle to glass & tighten grub screws to secure.

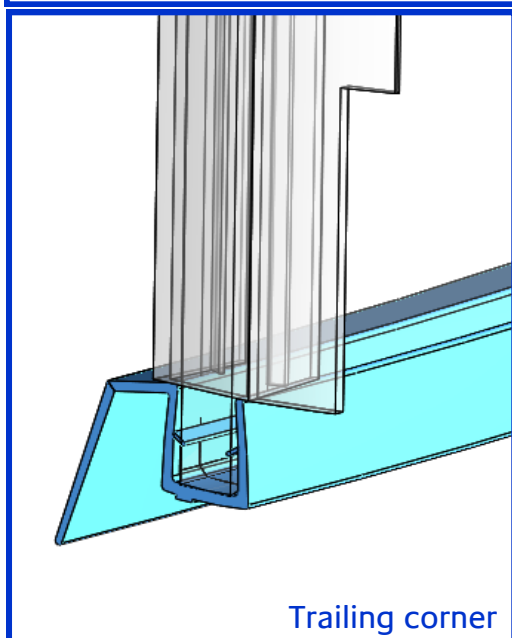
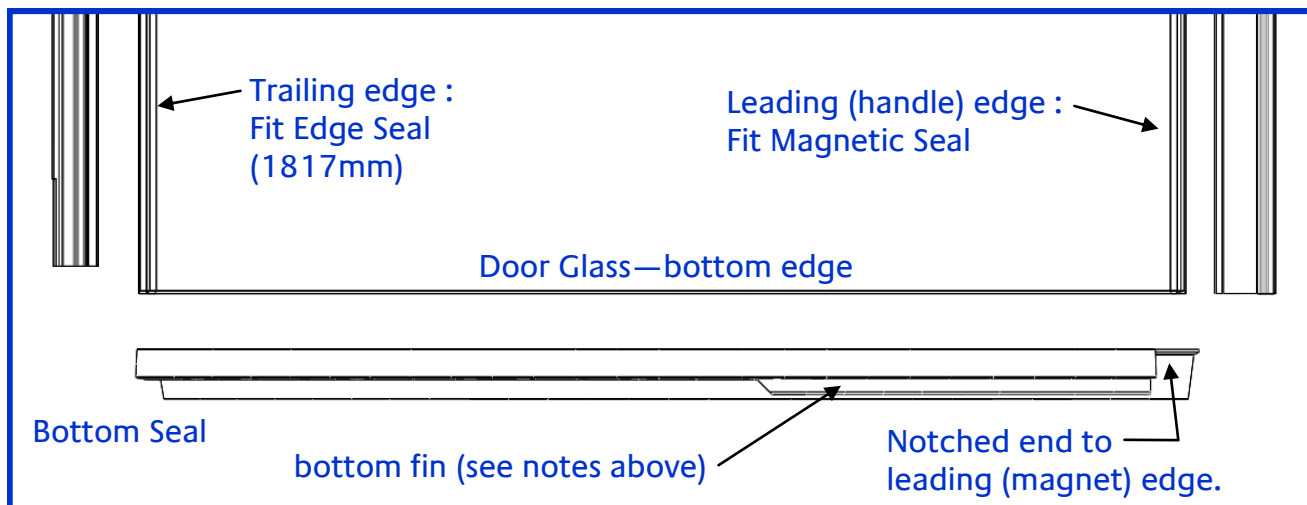
DOOR SEALS & DOOR HANGING :

(F)

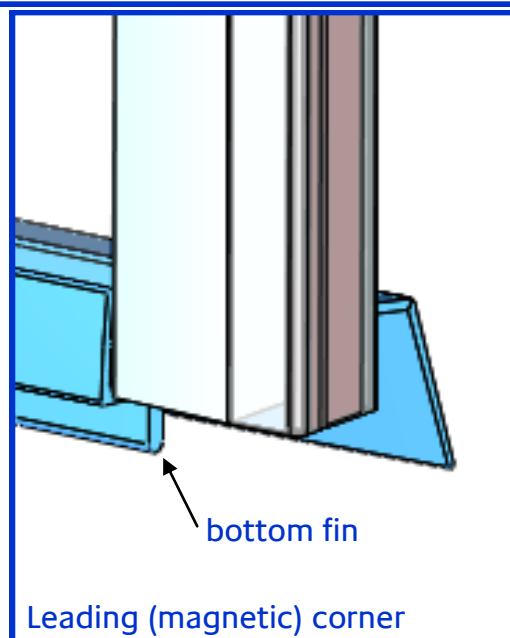
Carefully select door bottom seals : 2 pairs are provided to suit :

- A) 800mm size (restricted door motion - long bottom fin).
- B) 900mm size (non restricted door motion - short bottom fin).

Use "800" seal where door is used on 800 side of enclosure.



LEFT hand door
viewed from
FRONT

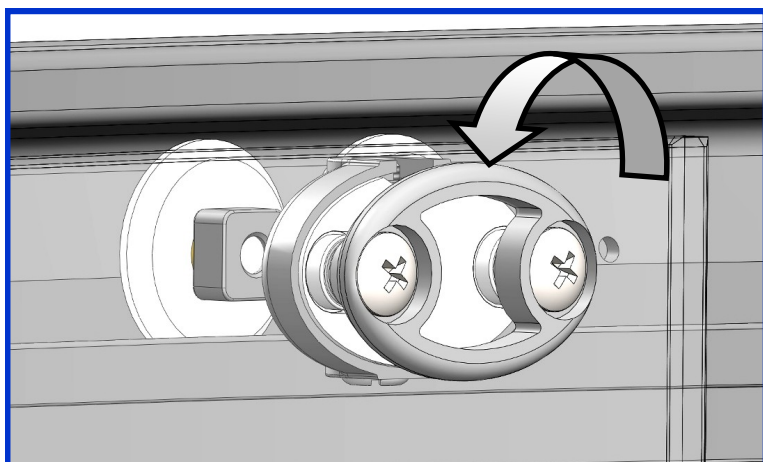


Align door edge seals with top of glass & push fully onto door glass as shown.

Check magnetic seal orientation before fitting (aligned & attracting each other).

Select appropriate bottom seal & push fully onto base (ensure soft 'drip' fin to inside of curve).

Seals may be 'wetted' to ease assembly.



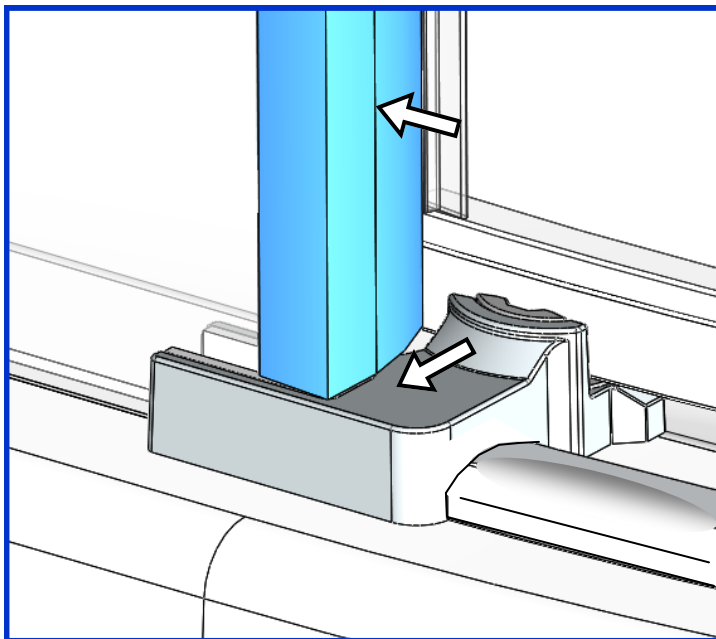
HANG DOORS :

With wheel body loose on glass (screws engaged but not tightened) lift door & engage wheels in top rail, immediately tighten clamping screws.

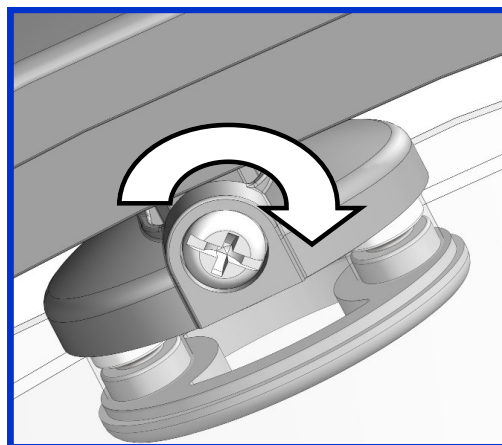
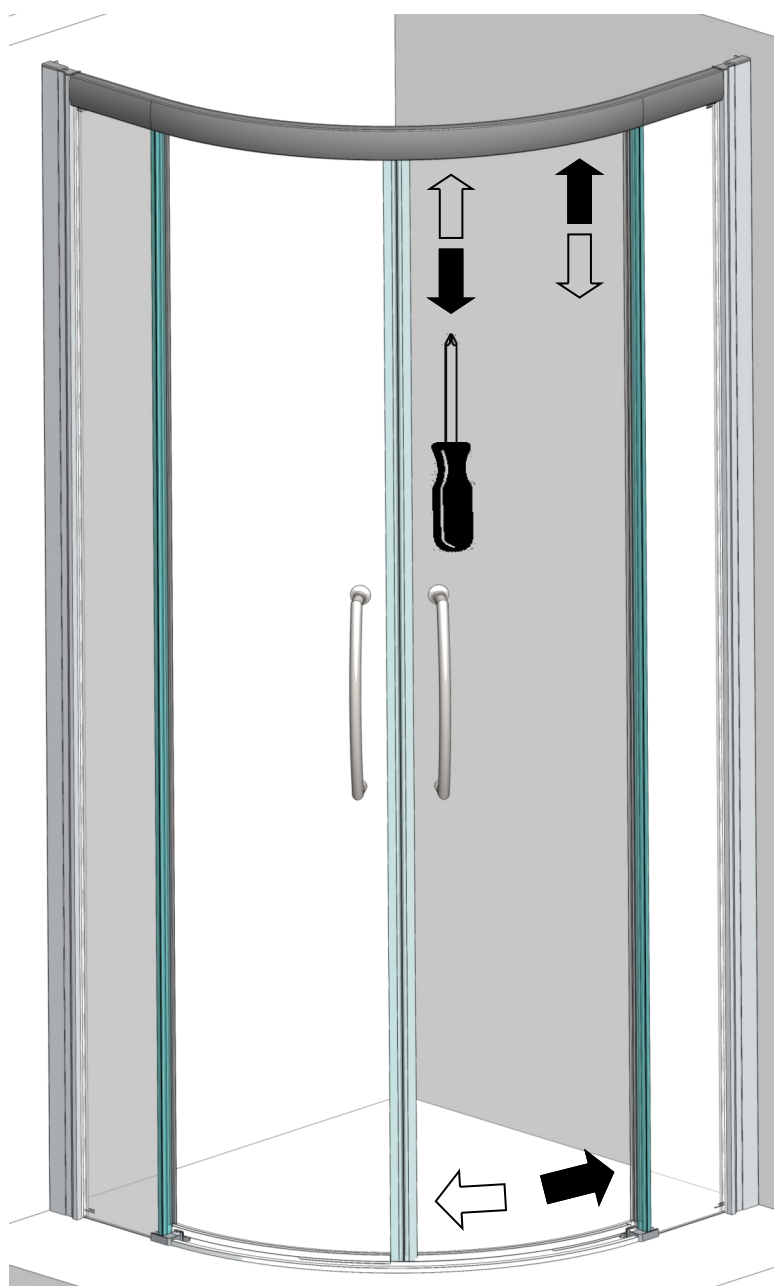
Carefully engage base of door into respective door guide.

PANEL EDGE SEALS & DOOR ADJUSTMENT :

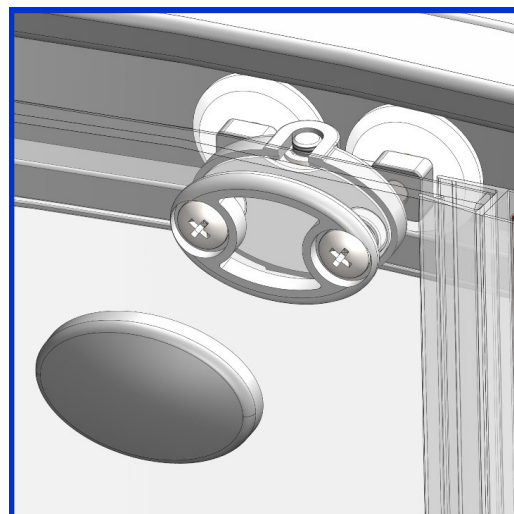
Ⓒ



Stand edge seal on guide, then working from bottom to top, push edge seal fully onto fixed glass panel.

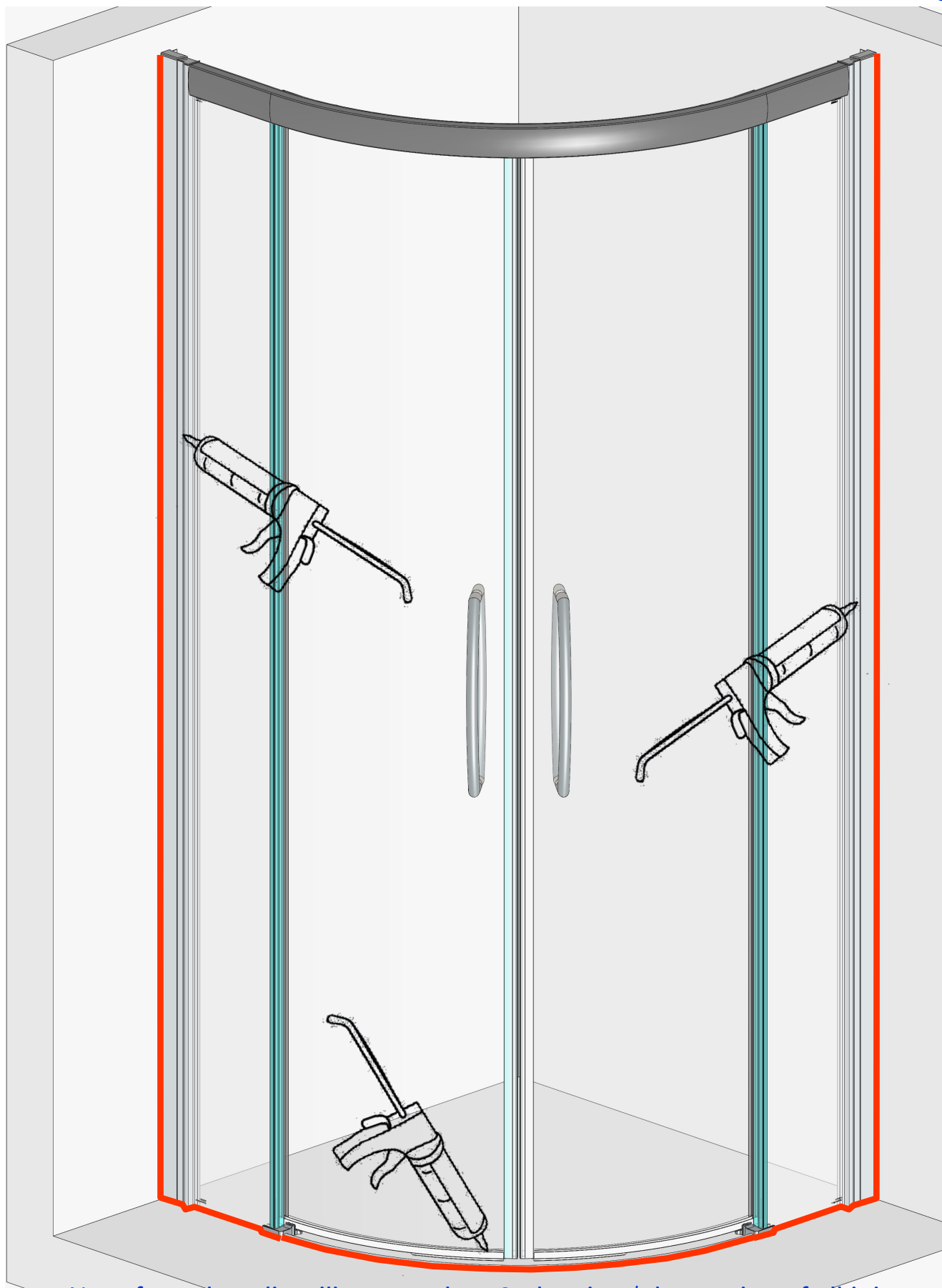


Adjust door heights until bottoms of doors just clear base of guide, doors are even & run smoothly. Adjust door angles so that magnetic seals hold door closed with no gaps. Turn adjusting screw clockwise to raise door.



After adjusting, check that clamp screws are tight & fit covers to wheels

SEALING :



Use of good quality silicone sealant & cleaning / degreasing of all joint areas is recommended.

Apply continuous silicone sealant bead as indicated EXTERNALLY ONLY
If NOT using threshold bar, seal upto / around guide only

BASIC TROUBLESHOOTING :

Door magnetic seals not meeting precisely / not holding :

Ensure magnetic seals are pushed fully onto door edge over entire door length.

Check door alignments & adjust if necessary (see fig G).

Check Magnetic Seal orientations (reverse if necessary).

Door motion noisy / Door not running smoothly :

Check for edge seals dragging on glass (can cause 'clicking' noise).

Check top wheels engaged properly in rails & roll smoothly along rails.

Wheels & Grooves are factory greased, however over time this may disperse or become contaminated by dust etc, cleaning of grooves & re application of sanitary silicone based grease will restore & ensure smooth door motion.

Leakage :

The sealing method described in these instructions relies on a continuous seal being applied between shower walls & tray before installing the enclosure (see fig A), it ensures a watertight seal around the perimeter of the enclosure to the shower walls & tray.

In the unlikely event of an enclosure leak, water will be visible on the outside of the enclosure itself, or around the perimeter silicone seal ONLY. Water / moisture appearing outside this area (ie at floor level) is normally due to incorrect tray installation.



Lakes Bathrooms Ltd

Alexandra Way
Ashchurch
Tewkesbury
Gloucestershire GL20 8NB

Service England, Scotland, Wales

8.30am—5pm Mon ~ Thurs

8.30am—4.30pm Fri

Tel / HELPLINE : 01684 853870

Fax : 01684 857411

www.lakesbathrooms.co.uk

Email : admin@lakesbathrooms.co.uk

Service : Northern Ireland

Ian A Kernohan

Firtrees

Green Way Industrial Estate

Conlig

Northern Ireland

BT23 7SU

8.30am—5pm Mon ~ Thurs

8.30am—4.30pm Fri

Tel : 02891 270233

Fax : 02891 270597

Email : info@iakonline.com