

Fixed Bathscreen.

Installation / Maintenance Instructions

rev 01.19



LAKES
SHOWERING SPACES

IMPORTANT NOTES :

Please Read Carefully & retain these instructions for Future Reference.

1. For ease & safety we advise that two persons assemble this product.
2. Protect shower tray surfaces at all times.
3. Exposed glass corners / edges **MUST NOT** contact hard surfaces at any time.
4. Check for cables, pipes etc before drilling walls.
5. Ensure all surfaces are dry, clean & free of loose debris / dust.
6. Unpack goods with care (small parts can become lodged in packaging & inadvertently discarded). Check parts supplied against parts & fittings listed herein. Damaged parts / omissions may be resolved by calling Lakes Bathrooms Helpline.
7. Whilst precautions are taken in manufacture, care must be taken when handling as rail ends may have sharp edges.
8. Before commencing, check :
 - a) shower tray (or base) is level & completely sealed to finished / tiled walls.
 - b) finished walls are sound & free of cracks, loose tiles / grout.
8. **AFTER INSTALLATION, DO NOT 'WET' ENCLOSURE FOR 48 HOURS TO ENSURE FULL CURE OF SILICONE SEALANT.**

USE :

General Care & Maintenance.

Provided this product is installed & operated in accordance with these instructions, problems should not arise. However should maintenance be required it should be carried out by a competent person with reference to these instructions. Before any work is carried out the root cause of the problem must be identified. Lakes Bathrooms service engineers are available if necessary to consult / carry out remedial work. Call Lakes Bathrooms HELPLINE.

Cleaning.

(Every one to two weeks depending on local water {hardness} conditions).

All glass panels in this product have a hydrophobic coating aiding 'runoff' of water droplets, reducing the need for frequent cleaning. For best appearance / product life however, regular cleaning is recommended.

Use **ONLY** mild soap / detergent solutions to clean. Rinse with water, squeegee glass panels & wipe frames dry with a soft cloth. Under no circumstances should abrasive, caustic or scouring products be used. Non compliance with these cleaning instructions may cause decorative finishes to deteriorate & could adversely affect safe operation of the enclosure.

Daily Care.

To prevent the build up of limescale, do not allow water droplets to dry on glass or frames. After showering, rinse with water, remove droplets from glass with a squeegee & wipe frame with a soft cloth.

Customer Service.

Quality Guarantee : Lakes Bathrooms Ltd guarantee Shower Doors & Enclosures against any manufacturing or material defects for the lifetime of the product. We will resolve defects free of charge by repairing / replacing parts as we feel necessary. To be 'free of charge' service work must be carried out by Lakes Bathrooms or approved agents.

Seals are considered 'wear & tear' parts, as such they are guaranteed for 12 months from purchase. Not Covered by this Guarantee : Damage or defects that result from improper installation, improper use, or lack of maintenance (including limescale buildup). Damage or defects that result from repairs / modifications undertaken by unauthorized persons. This guarantee is in addition to statutory & other legal rights.

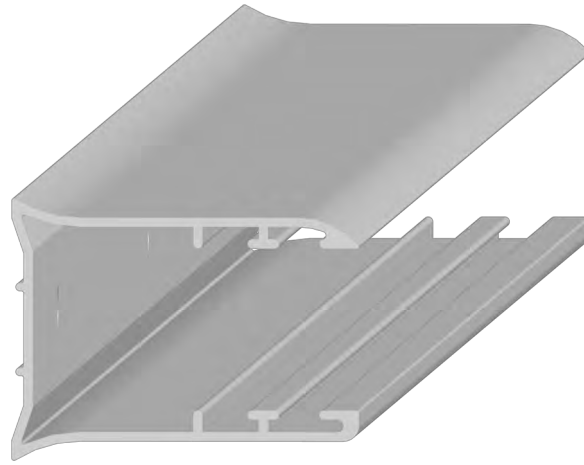
What to do if something goes wrong : Should the product not function correctly on initial use, firstly, contact the installer to check that unit installation & commissioning are in accordance with these instructions. Should this not resolve difficulties or should performance decline, consult 'Troubleshooting' section to see if simple home maintenance is needed. Alternatively our HELPLINE staff can assist, or if necessary arrange for a service engineer to visit.

Spares : We maintain extensive spare part stocks. Spares can be ordered / purchased from your retailer in the first instance. Parts will normally be dispatched within two working days from order placement.

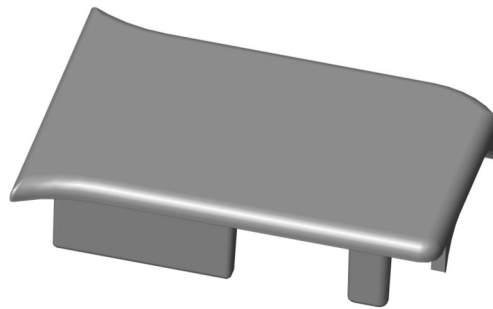
SUPPLIED PARTS :



Panel Sub Assy (1x)



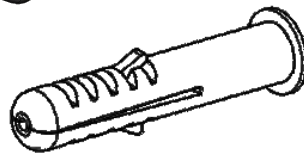
Wall Profile (1x)



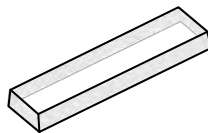
Top Cap (Wall Profile)
(Handed Pair)



4 x 45 long self tapping
screw (3x)



7,5 x 39mm Wall Plug (3x)



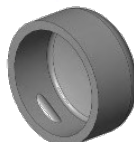
Support Pad (with self adhesive
peelable backing) (1x)



3,5 x 10 long Pan Head self tapping
screw (3x)

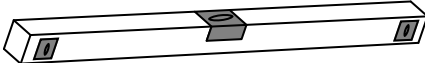
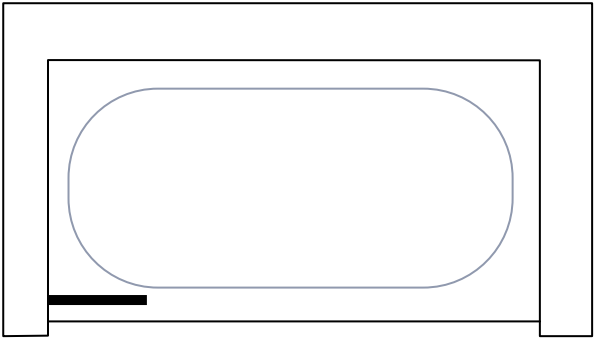


Cup Washer (3x)

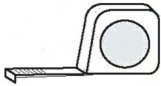


Decorative Screw Cover Cap (3x)

Tools Required



Spirit Level (with vertical 'bubble')



Tape Measure



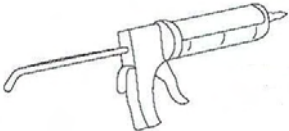
Power drill & 8mm masonry bit



Pencil



Pozi drive Screwdriver

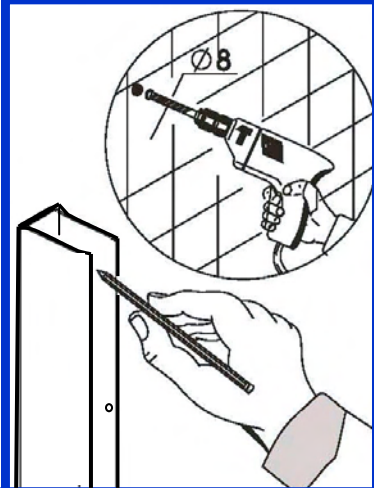
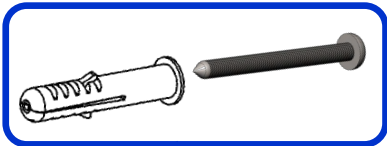
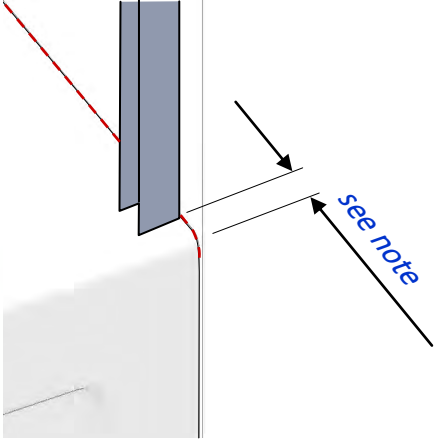
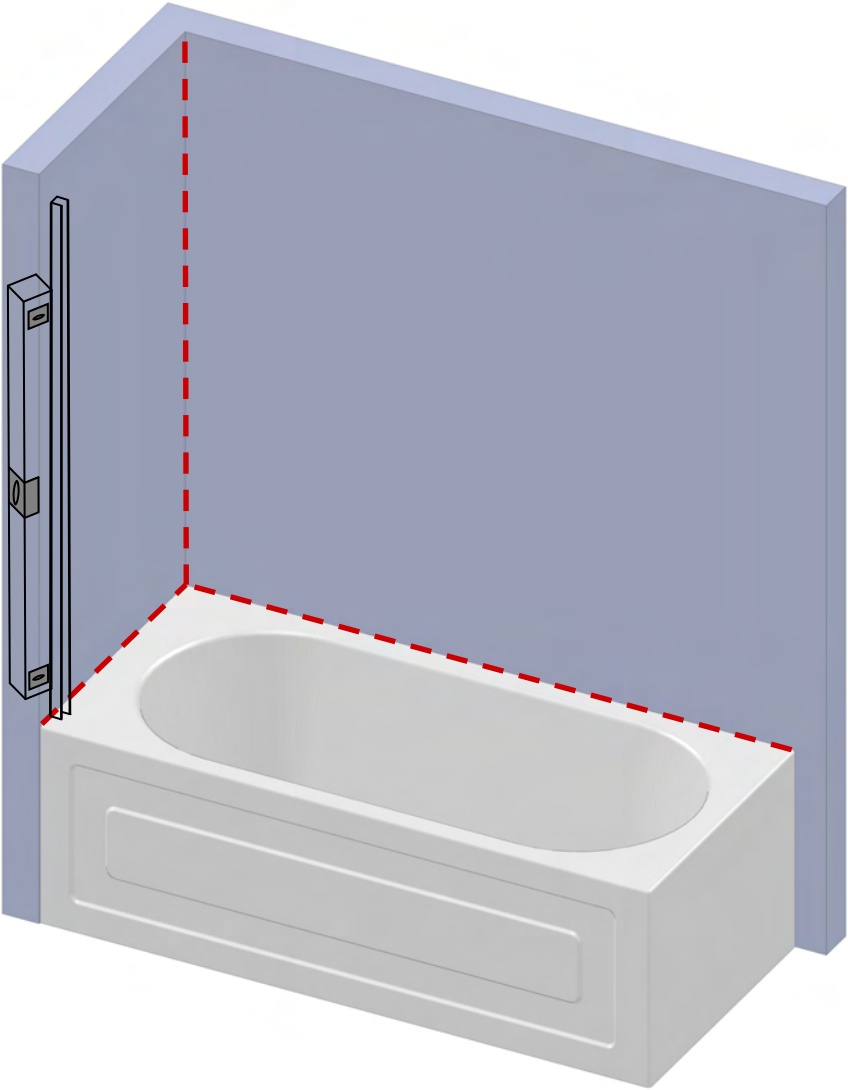


3mm HSS drill bit

Good quality silicone sealant & applicator

Ensure bathtub is completely level & that tub / wall (tile) joints are sealed & cured over entire length of bathtub sides (See Fig A) prior to fitting bathscreen.
DO NOT SEAL BATH EDGES UPTO A FITTED SCREEN !

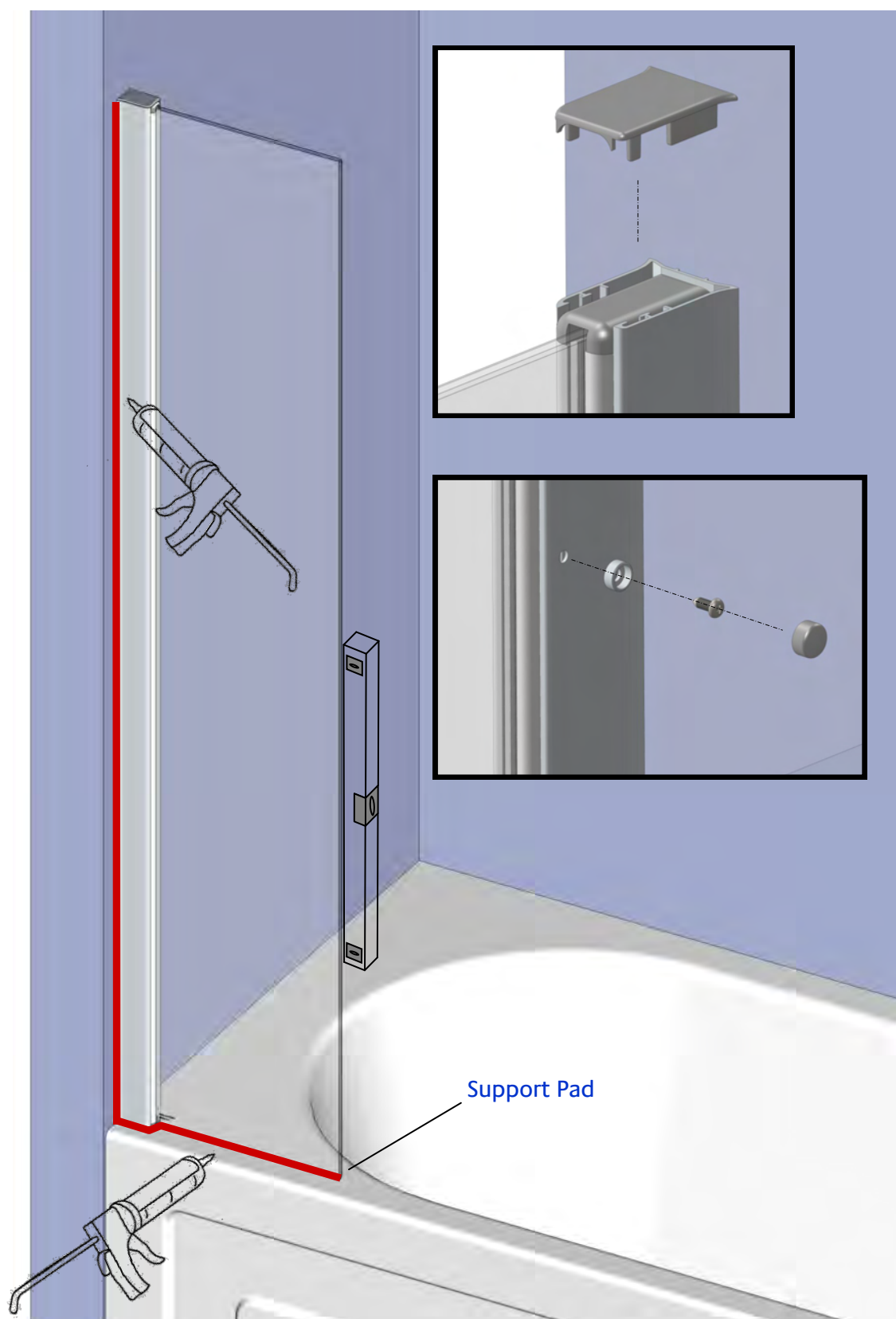
(A) Note : bathtubs vary greatly, for best results, position wall profile such that screen is toward inside of bath rim (inside highest point).



Wall profile orientation : Curved face outermost (holes to inside).
 Determine & mark wall hole positions. Drill, plug walls, then fit wall profile.

PANEL INSTALLATION & SEALING :

(B)



Having determined panel orientation, affix support pad to bottom edge of glass adjacent to outer corner. With support pad toward bath rim, lift panel into wall profile, push fully back & down onto bath rim. Adjust until plumb, then from inside, using wall profile holes as a guide, drill (3mm) & using cup washers, screw wall profile to panel (3,5 x 10 pan head screws), fit decorative screw caps, & fit wall profile cap.

The use of good quality silicone sealant & cleaning / degreasing of all joint areas is recommended. Apply continuous silicone sealant bead as indicated EXTERNALLY ONLY

BASIC TROUBLESHOOTING :

Leakage :

The sealing method described in these instructions relies on a continuous seal between walls & bathtub before installing the screen (see fig A), & positioning of the screen inside the 'high' point of the rim, then ensures a watertight seal around the perimeter, & prevents 'pooling' against the screen.

Should 'pooling' be a problem it is likely due to incorrect screen / rim positioning.

In the unlikely event of a screen leak, water will be visible on the outside of the screen itself, or around the perimeter silicone seal ONLY. Water / moisture appearing outside this area (ie at floor level, or under bathtub) is normally due to incorrect bathtub / screen sealing



Lakes Bathrooms Ltd

Alexandra Way
Ashchurch
Tewkesbury
Gloucestershire GL20 8NB

Service England, Scotland, Wales

8.30am—5pm Mon ~ Thurs

8.30am—4.30pm Fri

Tel / HELPLINE : 01684 853870

Fax : 01684 857411

www.lakesbathrooms.co.uk

Email : admin@lakesbathrooms.co.uk

Service : Northern Ireland

Ian A Kernohan

Firtrees

Green Way Industrial Estate

Conlig

Northern Ireland

BT23 7SU

8.30am—5pm Mon ~ Thurs

8.30am—4.30pm Fri

Tel : 02891 270233

Fax : 02891 270597

Email : info@iakonline.com